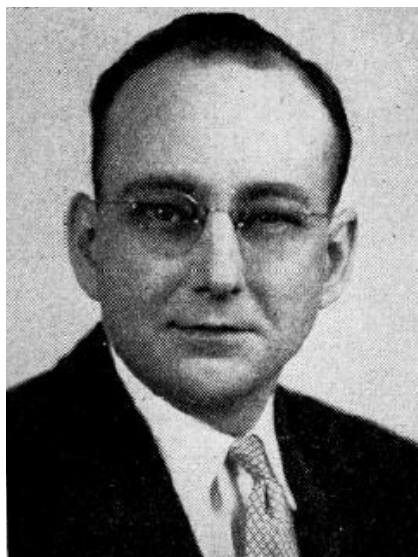


**CARSON, Robert B., Independence**  
**Buchanan County**  
**Republican**

Born in Moulton, Iowa, in 1920, son of D. C. and Mae (Black) Carson. Educated in the Moulton schools, graduating in 1937; received a B.A. degree from Parsons College and graduated from Drake University Law school in 1950. Married in 1947 to Shirley Sinn, who is also an attorney. Has been practicing law in Independence since 1950. County Attorney for Buchanan county from 1950 to 1954. Member of Presbyterian church, Masonic lodge, Rotary club, Elks, American Legion, Phi Alpha Delta legal fraternity, the local and Iowa State Bar associations, and director of the National Association of County and Prosecuting Attorneys in 1952 and 1953, and has been chairman of the Buchanan county Republican central committee and county Republican finance chairman. Council member-at-large of the Wapsipinicon Area Executive Council of the Boy Scouts of America. Veteran of World War II, with three years' service in central Pacific area. Republican floor leader, 57th G.A. Serving second term.





**CARSON, Robert B., Independence**  
**Buchanan County**  
Republican

Born in Moulton, Iowa, in 1920, son of D. C. and Mae (Black) Carson. Educated in the Moulton schools, graduating in 1937; received a B.A. degree from Parsons college and graduated from Drake University Law School in 1950. He was married in 1947 to Shirley Sinn, who is also an attorney. Mr. Carson has been practicing law in Independence since 1950. He was county attorney for Buchanan county from 1950 to 1954. Member of Presbyterian church, the Masonic lodge, the Rotary club, the American Legion, Phi Alpha Delta legal fraternity, the local and Iowa State Bar associations, and director of the National Association of County and Prosecuting Attorneys in 1952 and 1953, and has been Chairman of the Buchanan county Republican central committee. He is Council member-at-large of the Wap-sipinicon Area Executive Council of the Boy Scouts of America. Veteran of World War II, with three years service in central Pacific area.