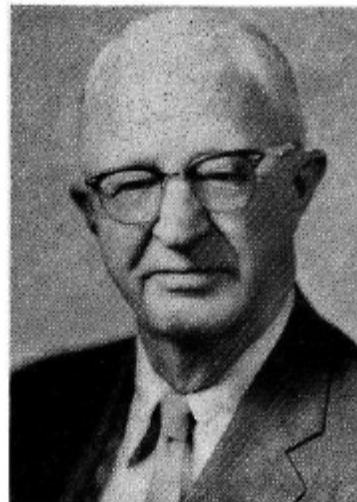


**NAUGHTON, John M., Sergeant Bluff
Woodbury County
Democrat**

Born June 3, 1892, Sioux City, Iowa, son of Mary and Mark Naughton, both Irish emigrants. Attended Sioux City public and parochial schools, graduated from Loras Academy, attended University of South Dakota School of Engineering. Married Florence Davenport of Sioux City, August 17, 1920. Has four sons, William, James, Gordon and John, and a grandson, Marc Naughton, and a granddaughter, Cathy Naughton. Served with army engineers, World War I. Became general superintendent for various engineering firms, and some of hotels and buildings constructed are President Hotel, Waterloo, Chieftain, Council Bluffs, Kirkwood Hotel, and Windsor Terrace, and Des Moines Building, in Des Moines. Appointed by U. S. Senator Guy M. Gillette to serve as WPA Administrator for Iowa; served as engineer for Tangney-McGinn hotels; owns and operates a 230-acre Woodbury county farm. Member of various veterans organizations; former Commander of DAV; member of Farm Bureau, carpenter's local No. 948, and Beta Theta Pi fraternity. A Catholic. Serving second term.



**NAUGHTON, John M., Sergeant Bluff
Woodbury County
Democrat**

Born June 3, 1892, Sioux City, Iowa, son of Mary and Mark Naughton, both Irish emigrants. Attended Sioux City public and parochial schools, graduated from Loras Academy, attended University of South Dakota School of Engineering. Married Florence Davenport of Sioux City August 17, 1920. Has four sons, William, James, Gordon and John, and a grandson, Marc Naughton. Served with army engineers, World War I. Became general superintendent for various engineering firms, and some of hotels and buildings constructed are President Hotel, Waterloo, Chieftain, Council Bluffs, Kirkwood, Windsor Terrace and Des Moines building in Des Moines. Appointed by U. S. Senator Guy M. Gillette to serve as WPA Administrator for Iowa; served as engineer for Tangney-McGinn hotels; owns and operates a 230 acre Woodbury county farm. Member of various Veterans Organizations; former Commander of D.A.V.; member of Farm Bureau, carpenter's local No. 948, and Beta Theta Pi fraternity. A Catholic. Serving first term.

