



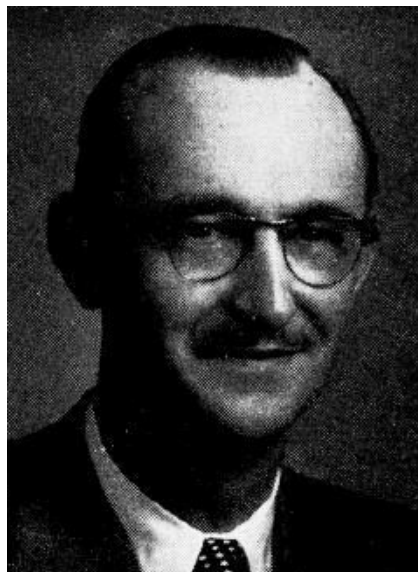
**HOTH, Elmer A., Postville**  
**Allamakee County**  
**Republican**

Born on a farm near Postville, Iowa, Allamakee county, November 12, 1900. Educated in the Waukon and Postville public schools. Married to Ella Meyer in 1921. Father of two sons, Charles and John, both of whom have served in the armed forces. Was manager of retail lumber yards at Postville and Waukon, Iowa, for twenty-one years. The past sixteen years has operated a hardware store in partnership with his brother of Postville Iowa. Member of St. Paul's Lutheran church, Commercial Club of Postville. Served as secretary of the Lutheran church council, Postville Board of Education, Postville town council, Serving fourth term.



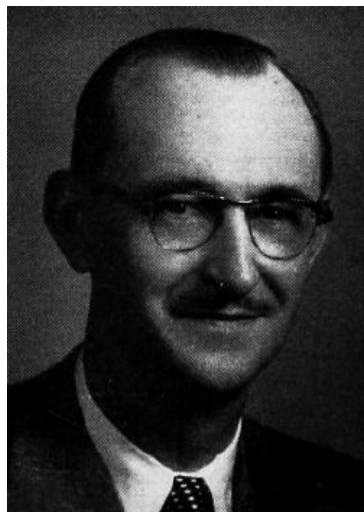
**HOTH, Elmer A., Postville**  
**Allamakee County**  
Republican

Born on a farm near Postville, Iowa, Allamakee county, November 12, 1900. Educated in the Waukon and Postville public schools. Married to Ella Meyer in 1921. Father of two sons, Charles and John, both of whom have served in the armed forces. Was manager of retail lumber yards at Postville and Waukon, Iowa, for twenty-one years. The past fourteen years has operated a hardware store in partnership with his brother at Postville, Iowa. Member of St. Paul's Lutheran church, Commercial club of Postville. Served as secretary of the Lutheran church council, Postville board of education, Postville town council. Serving third term.



**HOTH, Elmer A., Postville**  
**Allamakee County**  
**Republican**

Born on a farm near Postville, Iowa, Allamakee county, November 12, 1900. Son of Charles and Sophia Hoth. Educated in the Waukon and Postville public schools. Married to Ella Meyer in 1921. Father of two sons, Charles and John, both of whom have served in the armed forces. Was manager of retail lumber yards at Postville and Waukon, Iowa, for twenty-one years. The past ten years has operated a hardware store in partnership with his brother at Postville, Iowa. Member of St. Paul's Lutheran church, Kiwanis club and Commercial club of Postville. Served as secretary of the Lutheran church council, Postville board of education, Postville town council. Serving second term.



**HOTH, Elmer A., Postville**  
**Allamakee County**  
**Republican**

Born on a farm near Postville, Iowa, Allamakee County, November 12, 1900. Son of Charles and Sophia Hoth. Educated in the Waukon and Postville public schools. Married to Ella Meyer in 1921. Father of two sons, Charles and John, both of whom have served in the armed forces. Was manager of retail lumber yards at Postville and Waukon, Iowa, for twenty-one years. The past ten years has operated a hardware store in partnership with his brother at Postville, Iowa. Member of St. Paul's Lutheran church, Kiwanis Club and Commercial Club of Postville. Served as secretary of the Lutheran church council, Postville board of education, Postville town council and Allamakee county Ration Board during World War II. Serving first term.