

GILLESPIE, Raymond R., Dexter
Democrat
**16th Senatorial District—Madison and
Adair Counties**

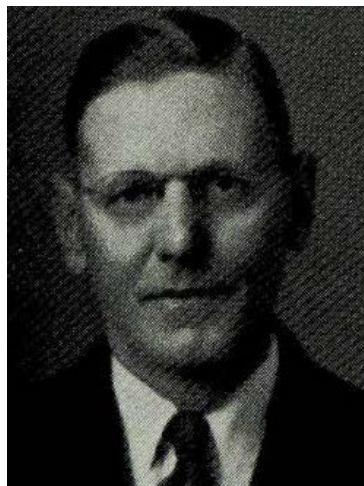
Member of pioneer Madison county family, born July 23, 1890. Attended rural schools, Dexter high school graduate, graduate of Iowa State College. Married Edith Power Dunham of Greenfield. Has two sons, Cecil, graduate of Iowa State College, and Jewett, graduate of State University of Iowa. Received presidential citation for efforts in food production during World War I, was elected to "Who's Who" in 1952 and re-elected in 1958. Until recently actively engaged in farming and livestock breeding. Veteran of World War I. Member of the United Presbyterian church, the Masonic order, Consistory, Farm Bureau, American Legion, American Angus Association. Served a number of years on school board, vice-president of Farmers and Merchants State Bank of Winterset, and is an extensive land owner. He and his wife have traveled widely. Serving fourth term.



GILLESPIE, Raymond R., Dexter
Democrat
**16th Senatorial District—Madison and
Adair Counties**

Member of pioneer Madison county family, born July 23, 1890. Attended rural schools, Dexter high school graduate, graduate of Iowa State College. Married Edith Power Dunham of Greenfield. Has two sons, Cecil, graduate of Iowa State College, and Jewett, graduate of State University of Iowa. Received presidential citation for efforts in food production during World War I, was elected to "Who's Who" in 1952. Until recently actively engaged in farming and livestock breeding. Veteran of World War I. Member of the United Presbyterian church, the Masonic order, Consistory, Farm Bureau, American Legion and American Angus Association. Served a number of years on school board, vice president of Farmers and Merchants State Bank of Winterset, and is an extensive land owner. He and his wife have traveled widely on the continent. Served in the 53rd, 54th, and 57th General Assemblies.





GILLESPIE, Raymond R., Dexter

Democrat

**16th Senatorial District—Madison and
Adair Counties**

Member of pioneer Madison county family, born July 23, 1890. Attended rural schools, Dexter high school, graduate of Iowa State College. Married Edith Power Dunham of Greenfield. Has two sons, Cecil, graduate of Iowa State College, and Jewett, graduate State University of Iowa. Until recently actively engaged in farming and livestock breeding. Veteran of World War I. Member of the United Presbyterian church, the Masonic order, Consistory, Farm Bureau, American Legion and American Angus Association. Served a number of years on school board, vice president of Farmers and Merchants State Bank of Winterset, and is an extensive land owner. Served in the 53rd and 54th General Assemblies.



GILLESPIE, Raymond R., Dexter
Democrat

**16th Senatorial District—Madison and
Adair Counties**

Member of pioneer Madison county family, born July 23, 1890. Attended rural schools, Dexter high school, graduate of Iowa State College. Married Edith Power Dunhan of Greenfield. Has two sons, Cecil, graduate of Iowa State College and Jewett, graduate State University of Iowa. Until recently actively engaged in farming and livestock breeding. A veteran of World War I. Member of the United Presbyterian Church, the Masonic Order, Farm Bureau, American Legion and American Angus Association. Served a number of years on school board, Vice President of Farmers & Merchants State Bank of Winterset, and is an extensive land owner.