

CHRISTOPHEL, Clarence, Waverly
Bremer County
Republican

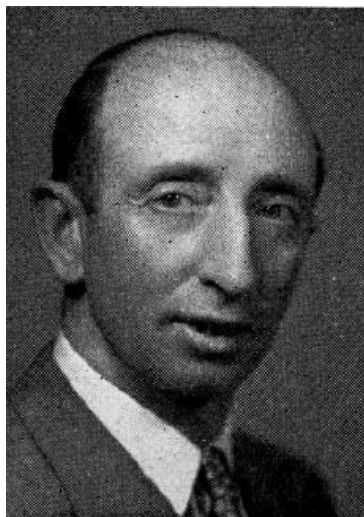
Born September 24, 1910, Bremer county, Waverly, Iowa, son of George and Edith Christophel. Attended rural schools of Bremer county. Graduated from the academic department of Wartburg College, Waverly, Iowa, in 1929. Married to Esther Walters of Shell Rock, Iowa, in 1935. Has two children, Richard and Elizabeth. Owns and operates a 240 acre livestock farm west of Waverly on Highway 3. Active in Farm Bureau, Chamber of Commerce, Lions Club and cooperative organizations. Member of the First Evangelical United Brethren church of Waverly, Iowa. His father served in the 41st and 42nd General Assemblies as a member of House of Representatives and was a member of the Senate during the 43rd and 44th General Assemblies. Serving third term.



CHRISTOPHEL, Clarence, Waverly
Bremer County
Republican

Born September 24, 1910, Bremer county, Waverly, Iowa, son of George and Edith Christophel. Attended rural schools of Bremer county. Graduated from the academic department of Wartburg College, Waverly, Iowa, in 1929. Married to Esther Walters of Shell Rock, Iowa, in 1935. Has two children, Richard and Elizabeth. Owns and operates a 240 acre livestock farm, west of Waverly on Highway 3. Active in Farm Bureau and cooperative organizations. Member of the First Evangelical United Brethren church of Waverly, Iowa. His father served in the 41st and 42nd General Assemblies as a member of House of Representatives and was a member of the Senate during the 43rd and 44th General Assemblies. Serving second term.





CHRISTOPHEL, Clarence, Waverly
Bremer County
Republican

Born September 24, 1910, Bremer county, Waverly, Iowa, son of George and Edith Christophel. Attended rural schools of Bremer county. Graduated from the academic department of Wartburg college, Waverly, Iowa, in 1929. Married to Esther Walters of Shell Rock, Iowa, in 1935. Has two children, Richard and Elizabeth. Owns and operates a 240 acre livestock farm, west of Waverly on Highway 3. Active in Farm Bureau and cooperative organizations. Member of the First Evangelical United Brethren church of Waverly, Iowa. His father served in the 41st and 42nd General Assemblies as a member of House of Representatives and was a member of the Senate during the 43rd and 44th General Assemblies. Serving first term.