



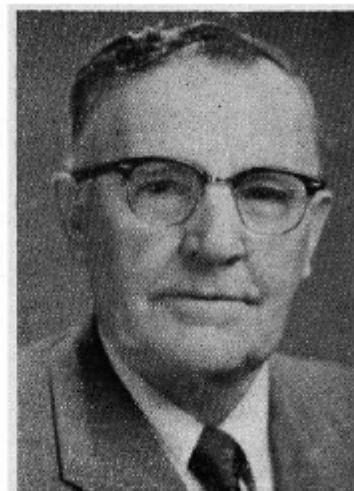
WEBER, George W., Columbus Junction
Republican

**20th Senatorial District—Muscatine and
Louisa Counties**

Born in Wapello, Iowa, Feb. 1, 1883, son of Christian and Ella J. Weber. Educated in schools of Louisa county; graduate of Iowa State Teachers College; took post-graduate work at University of Iowa and University of Michigan. Served as superintendent of schools for eleven years, and many years as president of board of education. Helped organize the Columbus Junction State Bank and was its president for 33 years. In business for past 46 years. Six children: Farrel, Lyle, Karl, Ruth, Dorothy and Paul. Member of Masonic Lodge, Farm Bureau, Izaak Walton League and the Methodist Church. Serving second term (fourth session) in Senate.

WEBER, George W., Columbus Junction
Republican
20th Senatorial District—Muscatine and
Louisa Counties

Born in Wapello, Iowa, February 1, 1883, son of Christian and Ella J. Weber. Educated in schools of Louisa county; graduate of Iowa State Teachers College; took post-graduate work at University of Iowa and University of Michigan. Served as superintendent of school for eleven years, and many years as president of board of education. Helped organize the Columbus Junction State Bank and has been its president for thirty-one years. In business for past forty-four years. Six children: Farrel, Lyle, Karl, Ruth, Dorothy and Paul. Member of Masonic lodge, Farm Bureau, Izaak Walton League and the Methodist church. Serving first session of second term.





WEBER, George W., Columbus Junction

Republican

**20th Senatorial District—Muscatine and
Louisa Counties**

Born in Wapello, Iowa, February 1, 1883, son of Christian and Ella J. Weber. Educated in schools of Louisa county; graduate of Iowa State Teachers College; took post-graduate work at Iowa University and University of Michigan. Served as superintendent of schools for eleven years, and many years as president of board of education. Helped organize the Columbus Junction State Bank and has been its president for 29 years. In business for past 42 years. Six children: Farrel, Lyle, Karl, Ruth, Dorothy and Paul. Member of Masonic lodge, Farm Bureau, Isaak Walton League and the Methodist church. Hobbies: fishing and gardening, specializing in rose culture. Serving first term.



**WEBER, George W., Columbus Junction
Republican
20th Senatorial District—Muscatine and
Louisa Counties**

Born in Wapello, Iowa, February 1, 1883, son of Christian and Ella J. Weber. Educated in schools of Louisa county; graduate of Iowa State Teachers college; took post-graduate work at Iowa University and University of Michigan. Served as superintendent of schools for eleven years, and many years as president of board of education. Helped organize the Columbus Junction State Bank and has been its president for 27 years. In business for past 40 years. Six children: Farrel, Lyle, Karl, Ruth, Dorothy and Paul. Member of Masonic lodge, Farm Bureau, Izaak Walton League and the Methodist church. Hobbies: fishing and gardening, specializing in rose culture. Serving first term.