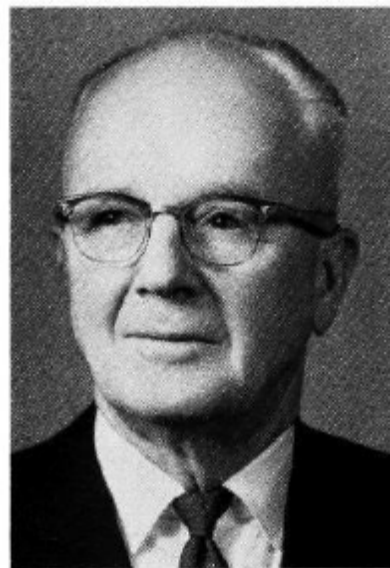


WIER, Fred E., Letts
Louisa County
Republican

Born at Letts, Louisa County, Jan. 3, 1892, son of Henry M. and Rose Wier. Educated in public schools of Louisa County. Married Anna Beik, June 22, 1922. Has one daughter, Jean (Mrs. H. Richard Bieri). One grandson, Fred William Bieri. Farm owner and veteran of World War I. Served on Grandview Consolidated School Board, chairman of Louisa County Farm Bureau, member of Grandview Cooperative Telephone Company, County Agricultural Stabilization and Conservation Committee, Rotary Club and director of the Columbus Junction State Bank. Member of the Grandview Community Church, and Sunday school superintendent for 27 years. Member of the American Legion and Farm Bureau. Serving third term.





WIER, Fred E., Letts
Louisa County
Republican

Born at Letts, Louisa county, Jan. 3, 1892. Son of Henry M. and Rose Wier. Educated in public schools of Louisa county. Married Anna Beik, June 22, 1922. Have one daughter, Jean (Mrs. H. Richard Bieri). Farm owner and veteran of World War I. Served on the Grandview Consolidated School Board, Chairman of Louisa County Farm Bureau. Member of Grandview Cooperative Telephone Company, County Agricultural Stabilization and Conservation Committee, Rotary Club and director of the Columbus Junction State Bank. Member of the Grandview Community Church, and Sunday school superintendent for 27 years. Member of the American Legion and Farm Bureau. Serving second term.

WIER, Fred E., Letts
Louisa County
Republican

Born at Letts, Louisa county, January 3, 1892. Son of Henry M. and Rose Wier. Educated in public schools of Louisa county. Married Anna Belk, June 22, 1922. Have one daughter, Jean (Mrs. H. Richard Bieri). Farm owner and veteran of World War I. Served on the Grandview Consolidated School Board, Chairman of Louisa County Farm Bureau and Grandview Cooperative Telephone Company. Member of County A. S. C. Committee. Served three terms Louisa County Farm Service at Columbus Junction. Member of the Grandview Community Church and Sunday School Superintendent for twenty-seven years. A member of the American Legion and Farm Bureau. Serving first term.

