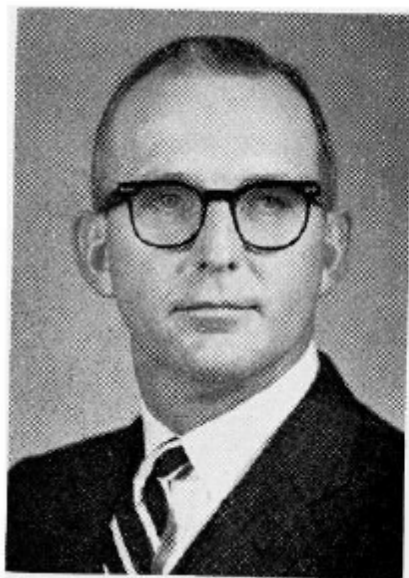


**WEARIN, Edward A., Red Oak**  
Republican  
**Eighth (Old) District—Montgomery**  
**County**

Born in Malvern, April 16, 1918, son of Josiah F. and Ethel Anderson Wearin. Graduate of Malvern schools, Phillips Exeter Academy, Stanford University, and Harvard Business School. Honors graduate of each school. State president boys' 4-H in 1936. Lieutenant U.S.N.R. World War II. Livestock farmer. Partner in cattle ranch in Cherry County, Neb. Congregationalist, member of state board of directors. Member of Iowa Development Commission, 1961-1963. Mason. Married Helen Cochran, Central Canovanas, Puerto Rico. Children: Elizabeth, Edward, Jr., Sarah and Catherine. Elected to senate 1960.



**WEARIN, Edward A., Red Oak**  
Republican  
**Eighth Senatorial District—Montgomery  
and Mills Counties**

Born April 16, 1918, at Malvern, in Mills county, the son of Josiah F. and Ethel Anderson Wearin. Graduate of the Malvern schools, the Phillips Exeter Academy, Stanford University and the Harvard Business School. Honors graduate of each school. Lieutenant U.S.N.R. in World War II, on active duty 45 months. Congregationalist, former trustee, and currently chairman of board of deacons. Livestock farmer, feeding cattle and raising hogs. Also partner in cattle ranch in Cherry county, Nebraska. Married Helen Cochran in Central Canovanas, Puerto Rico, 1943. Four children, Elizabeth, Andy, Sarah and Catherine. Mason. Serving first term.