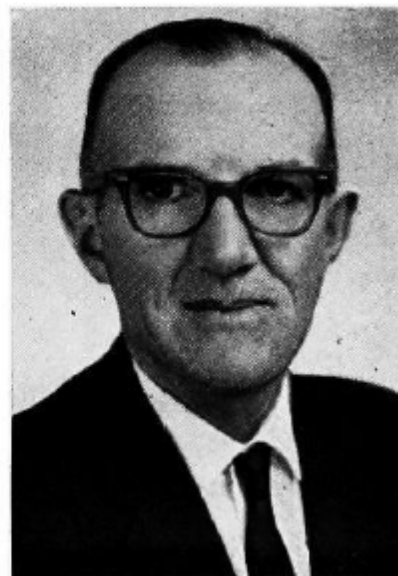


**WALTER, Paul M., Union
Hardin County
Republican**

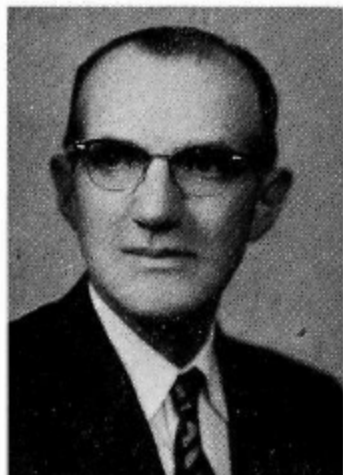
Born in Marshall County, Iowa, Dec. 14, 1904, son of Warren and Iva Walter. Graduated from Iowa State University with B.S. degree in agricultural economics, 1927. Married Mary Brindle, Conrad, Iowa, 1927. Father of two daughters, Darlene and Marilyn. Engaged in farming and livestock feeding since 1927. Served in 53rd, 54th, 55th, 56th, 57th, 58th, 59th, and 60th sessions of general assembly. Member of the Friends Church, past master of Masonic Lodge, bank director, former president of Hardin County Farm Bureau, and held office in a number of other county and community organizations. Serving 8th term.





WALTER, Paul M., Union
Hardin County
Republican

Born in Marshall county, Iowa, Dec. 14, 1904, son of Warren and Iva Walter. Graduated from Iowa State University with B.S. degree in agricultural economics, 1927. Married Mary Brindle, Conrad, Iowa, 1927. Father of two daughters, Darlene and Marilyn. Engaged in farming and livestock feeding since 1927. Served in the 53rd, 54th, 55th, 56th, 57th, 58th, and 59th sessions of General Assembly. Member of the Friends Church, past master of Masonic Lodge, bank director, former president of Hardin County Farm Bureau, and held office in a number of other county and community organizations. Serving seventh term.



WALTER, Paul M., Union
Hardin County
Republican

Born in Marshall county, Iowa, December 14, 1904, son of Warren and Iva Walter. Graduated from Beaman high school in 1922. Graduated from Iowa State College with B.S. degree in agricultural economics, 1927. Married Mary Brindle, Conrad, Iowa, 1927. Father of two daughters, Darlene and Marilyn. Engaged in farming and livestock feeding since 1927. Served in the 53rd, 54th, 55th, 56th, 57th, and 58th sessions of General Assembly. Member of the Friends church, past master of Masonic lodge, bank director, former president of Hardin County Farm Bureau, and held office in a number of other county and community organizations. Serving sixth term.

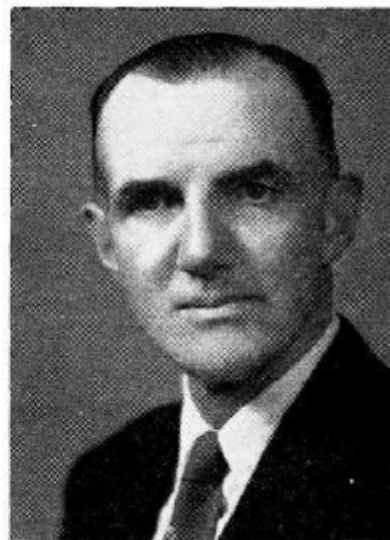
WALTER, Paul M., Union
Hardin County
Republican

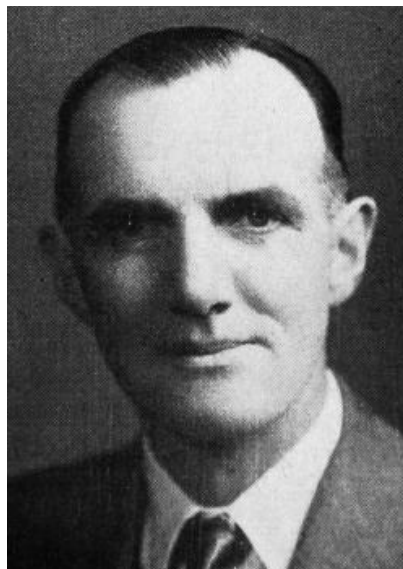
Born in Marshall county, Iowa, December 14, 1904, son of Warren and Iva Walter. Graduated from Beaman high school in 1922. Graduated from Iowa State College with B.S. degree in agricultural economics, 1927. Married Mary Brindle, Conrad, Iowa, 1927. Father of two daughters, Darlene and Marilyn. Engaged in farming and livestock feeding since 1927. Served in the 53rd, 54th, 55th, 56th sessions of the General Assembly, member of the Friends church, past master of Masonic lodge, bank director, former president Hardin county Farm Bureau, and held office in a number of other county and community organizations. Serving fifth term.



**WALTER, Paul M., Union Hardin County
Republican**

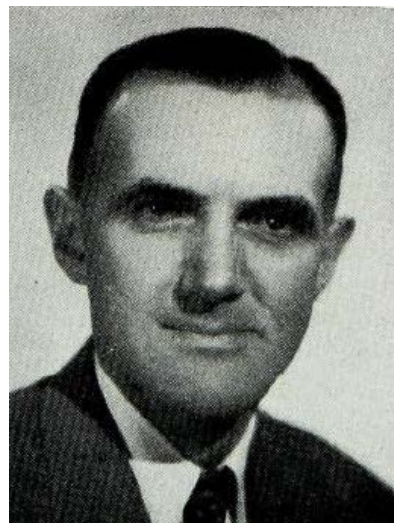
Born in Marshall county, Iowa, December 14, 1904, son of Warren and Iva Walter. Graduated from Beaman high school in 1922. Graduated from Iowa State college with B.S. degree in agricultural economics, 1927. Married Mary Brindle, Conrad, Iowa, 1927. Father of two daughters, Darlene and Marilyn. Engaged in farming and livestock feeding since 1927. Served in the 53rd General Assembly, member of the Friends church, past master of Masonic lodge, bank director, former president Hardin county Farm Bureau, and held office in a number of other county and community organizations. Serving fourth term.





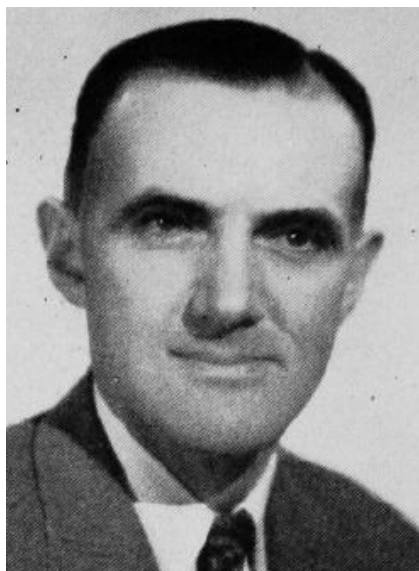
**WALTER, Paul M., Union Hardin County
Republican**

Born in Marshall county, Iowa, December 14, 1904, son of Warren and Iva Walter. Graduated from Beaman high school in 1922. Graduated from Iowa State College with B.S. degree. Agriculture Economics, 1927. Married Mary Brindle, Conrad, Iowa, 1927. Father of two daughters, Darlene and Marilyn. Engaged in farming and livestock feeding since 1927. Served in the 53rd General Assembly, member of the Friends church, past master of Masonic lodge, bank director, former president Hardin county Farm Bureau, and held office in a number of other county and community organizations. Serving third term.



**WALTER, Paul M., Union Hardin County
Republican**

Born in Marshall county, Iowa, December 14, 1904, son of Warren and Iva Walter. Graduated from Beaman high school in 1922. Graduated from Iowa State College with B. S. degree. Agriculture Economics, 1927. Married Mary Brindle, Conrad, Iowa, 1927. Father of two daughters, Darlene and Marilyn. Engaged in farming and livestock feeding since 1927. Served in the 53rd General Assembly, member of the Friends church, past master of Masonic lodge, bank director, former president Hardin county Farm Bureau, and held office in a number of other county and community organizations. Serving second term.



**WALTER, Paul M., Union Hardin County
Republican**

Born in Marshall county, Iowa, December 14, 1904, son of Warren and Iva Walter. Graduated from Beaman high school in 1922. Graduated from Iowa State college with B.S. degree, Agriculture Economics, 1927. Married Mary Brindle, Conrad, Iowa, 1947. Father of two children, Darlene LaVon and Marilyn Joyce. Engaged in farming and livestock feeding since 1928. Member of the Friends Church, Theta Xi and Pi Epsilon Pi fraternities, past master of Masonic lodge. member of State Farm Bureau Resolutions committee 1947, president Hardin County Farm Bureau two years, bank director, farm manager and loan agent for an insurance company. Served as Treasurer local school board 19 years; held office in a number of community affairs..