

**VERMEER, Elmer H., Pella**  
**Marion County**  
**Republican**

Born in Marion County, near Pella, June 7, 1920. Son of Jacob G. and Anna Haven Vermeer. Educated in rural schools, Pella High School and Central College. Veteran of World War II, with 4½ years' service in Army Corps of Engineers. Served as demolition officer with 2nd Ranger Battalion in European theatre of operation. Married Jeannette V. Lankelma of Pella, Sept. 20, 1946. Four sons: Tom, Dick, Harry and James, and one daughter, Ann. He is a nurseryman and farmer. Member of the Reformed Church, American Legion, Farm Bureau and trustee of Central College. Serving fifth term.



**VERMEER, Elmer H., Pella**  
**Marion County**  
Republican

Born in Marion County, near Pella, June 7, 1920. Son of Jacob G. and Anna Haven Vermeer. Educated in rural schools, Pella high school and Central College. Veteran of World War II, with 4½ years' service in Army Corps of Engineers. Served as demolition officer with 2nd Ranger Battalion in European theatre of operation. Married Jeannette V. Lankelma of Pella, Sept. 20, 1946. Four sons, Tom, Dick, Harry and James, and one daughter Ann. He is a nurseryman and farmer. Member of the Reformed Church, American Legion, Farm Bureau and trustee of Central College. Serving fourth term.



**VERMEER, Elmer H., Pella**  
**Marion County**  
Republican

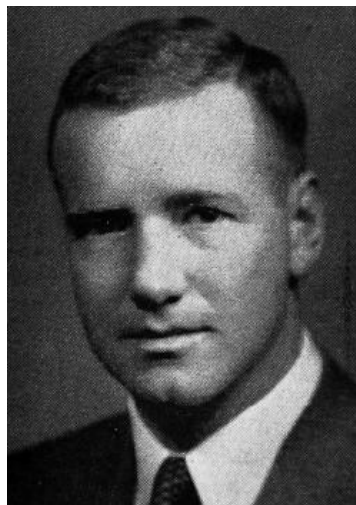
Born in Marion county, near Pella, June 7, 1920. Son of Jacob G. and Anna Haven Vermeer. Educated in rural schools, Pella high school and Central College. Veteran of World War II, with 4½ years service in Army Corps of Engineers. Served as Demolition Officer with 2nd Ranger Battalion in European theatre of operation. Married Jeannette V. Lankelma of Pella, September 20, 1946. Four sons, Tom, Dick, Harry and James. At the present time he owns and operates a livestock farm west of Pella. Member of the Reformed church American Legion and Farm Bureau. Speaker Pro Tempore, 57th G. A. Serving third term.





**VERMEER, Elmer H. Pella**  
**Marion County**  
**Republican**

Born in Marion county, near Pella, June 7, 1920. Son of Jacob G. and Anna Haven Vermeer. Educated in rural schools, Pella high school and Central college. Veteran of World War II, with 4½ years service in Army Corps of Engineers. Served as Demolition Officer with 2nd Ranger Battalion in European theatre of operation. Married Jeannette V. Lankelma of Pella, September 20, 1946. Four sons, Tom, Dick, Harry and James. At the present time he owns and operates a livestock farm west of Pella. Member of the Reformed church, American Legion and Farm Bureau. Serving second term.



**VERMEER, Elmer H., Pella**  
**Marion County**  
**Republican**

Born in Marion county, near Pella, June 7, 1920. Son of Jacob G. and Anna Haven Vermeer. Educated in rural schools, Pella high school and Central College. Veteran of World War II, with 4½ years service in Army Corps of Engineers. Served as Demolition Officer with 2nd Ranger Battalion in European theatres of operation. Married Jeannette V. Lankelma of Pella, September 20, 1946. Three sons, Tom, Dick and Harry. At the present time he owns and operates a livestock farm west of Pella. Member of the Reformed church, American Legion and Farm Bureau. Serving first term.