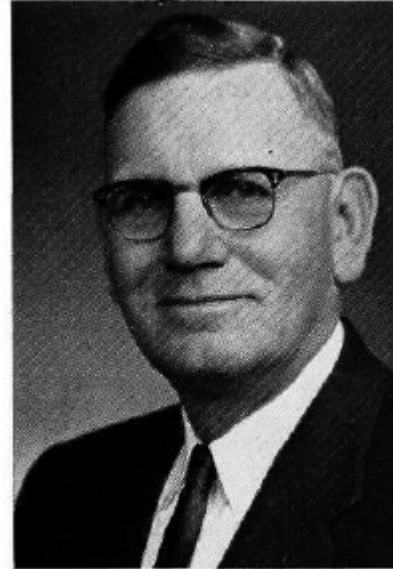


**PHELPS, Dewey B., Hillsboro**  
Republican  
**Second (Old) Senatorial District—**  
**Van Buren County**

Born in Wapello County, Iowa, May 15, 1898, son of T. M. and Nellie Tade Phelps. Educated in public schools and graduate of two-year course in agriculture at Iowa State University. Married Nina Conard in 1925. A son, Dewey Blake, Jr., lives on the home farm. A daughter, Carrel Jean McLeland, is a student at Iowa State University. Five grandchildren. Extensive farmer, livestock feeder and Angus breeder. Past president of local and township school board, County Farm Bureau, director of Iowa Farm Bureau Federation, Iowa State University Extension advisory committee; director of Mount Pleasant P.C.A. for 12 years. Past member of board of managers and chairman of town and country department of Iowa Baptist Convention. Director of Hillsboro Savings Bank past eleven years. Member and deacon of Baptist Church, member of Masonic Lodge, Zerapath consistory, O.E.S., Farm Bureau, Izaak Walton, State and County Historical Societies and Tenco Agricultural development committee. Serving second session in senate.



**PHELPS, Dewey B., Hillsboro**  
Republican  
**Second Senatorial District—Jefferson and  
Van Buren Counties**

Born in Wapello county, Iowa, May 15, 1898. Educated in public schools and graduate of two year course in agriculture at Iowa State University. Married Nina Conard in 1925. A son, Dewey Jr., has three children and lives on the home farm. A daughter, Carrel Jean, is a student at Iowa State University. Extensive farmer, livestock feeder and Angus breeder. Past president of local school board, county Farm Bureau, director of Iowa Farm Bureau Federation, Iowa State University extension advisory committee, director of Mt. Pleasant P.C.A. for 12 years. A member of board of managers and chairman of town and country department of Iowa Baptist Convention. Has been director of Hillsboro Savings Bank for nine years. Member of Masonic Lodge, Zerapath Consistory, Eastern Star, Baptist Church, Farm Bureau. Serving first term in Senate.

