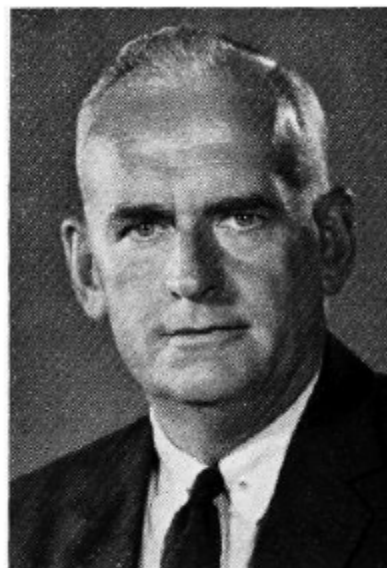
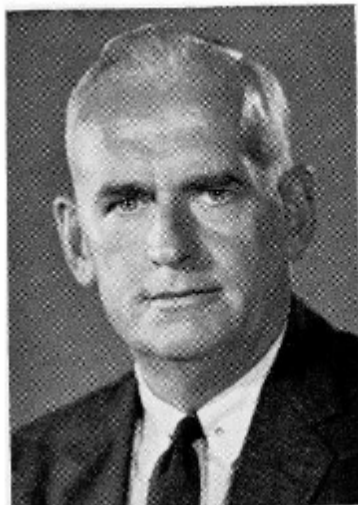


NOLAN, D. C., Iowa City
Republican
25th (Old) Senatorial District—
Johnson County

Born Aug. 29, 1902, on a farm in Guthrie County, Iowa, son of Martin J. and Anna Hanley Nolan. Attended country school, high school at Perry, Iowa, and liberal arts and law school at Creighton University. Was superintendent of a chautauqua in 1924. Practiced law in Des Moines 1926 to 1931 and in Iowa City from 1931 to date. Past member of board of governors of Iowa Bar Association, past president of Iowa City Chamber of Commerce, past president and national counselor of Boy Scout Council, member of the local, Iowa and American Bar Associations. Member of St. Patrick's Church in Iowa City. Married Margaret E. Schwertley of Missouri Valley, Iowa, in 1927. They have eight children: Betty, Barbara (Mrs. Francis Wagner), Dan, Katherine (Mrs. B. J. Callaci), John, Richard, Frances and Peggy. Member of 55th, 56th, 57th (majority floor leader), 58th, 59th and 60th General Assemblies.





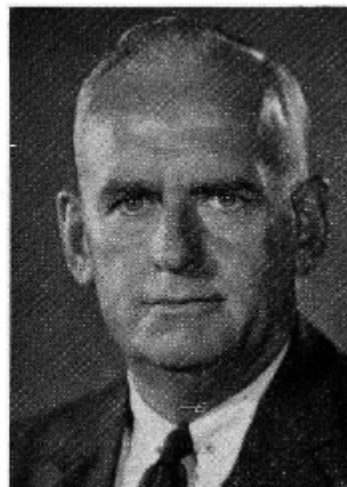
NOLAN, D. C., Iowa City
Republican

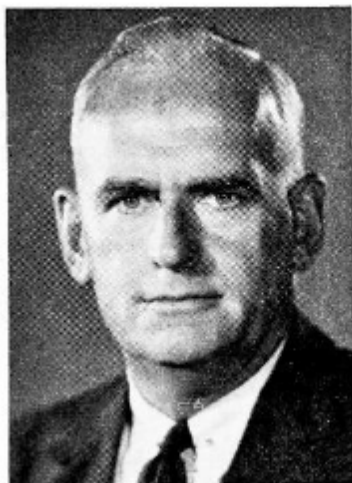
25th Senatorial District—Johnson County

Born Aug. 29, 1902, on a farm in Guthrie county, Iowa, son of Martin J. and Anna Hanley Nolan. Attended country school, high school at Perry, Iowa, and liberal arts and law school at Creighton University. Was superintendent of a chautauqua in 1924. Practiced law in Des Moines 1926 to 1931 and in Iowa City from 1931 to date. Past member of board of governors of Iowa Bar Association, past president of Iowa City Chamber of Commerce, past president and national counselor of Boy Scout Council, member of the local, Iowa and American Bar Associations. Member of St. Patrick's church in Iowa City. Married Margaret E. Schwertley of Missouri Valley, Iowa, in 1927. They have eight children: Betty, Barbara (Mrs. Francis Wagner), Dan, Katherine, John, Richard, Frances and Peggy. Serving in fifth session. Majority floor leader in 57th General Assembly.

NOLAN, D. C., Iowa City
Republican
25th Senatorial District—Johnson County

Born August 29, 1902, on a farm in Guthrie county, Iowa, son of Martin J. and Anna Hanley Nolan. Attended country school, high school at Perry, Iowa, and liberal arts and law school at Creighton University. Was superintendent of a chautauqua in 1924. Practiced law in Des Moines 1926 to 1931 and in Iowa City from 1931 to date. Past member of Board of Governors of Iowa Bar Association, past president of Iowa City Chamber of Commerce, past president and national counselor of Boy Scout Council, member of the local, Iowa and American Bar Associations. Member of St. Patrick's church in Iowa City. Married Margaret E. Schwertley of Missouri Valley, Iowa, in 1927. They have eight children: Betty, Barbara (Mrs. Francis Wagner), Dan, Katherine, John, Richard, Frances and Peggy. Serving fourth term. Majority floor leader in 57th G.A.





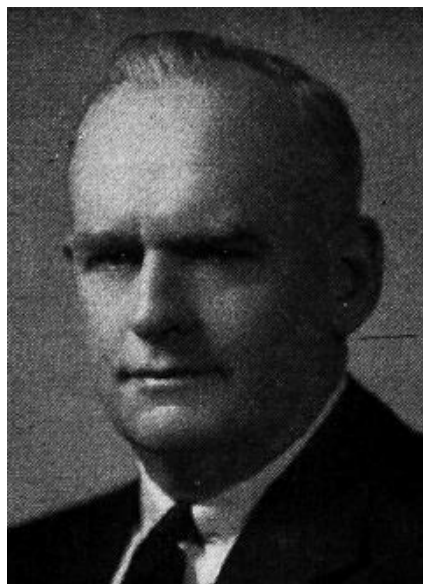
NOLAN, D. C., Iowa City
Republican

25th Senatorial District—Johnson County
Born August 29, 1902, on a farm in Guthrie county, Iowa, son of Martin J. and Anna Hanley Nolan. Attended country school, high school at Perry, Iowa, and liberal arts and law school at Creighton University. Was superintendent of a chautauqua in 1924. Practiced law in Des Moines 1926 to 1931 and in Iowa City from 1931 to date. Past member of Board of Governors of Iowa Bar Association, past president of Iowa City Chamber of Commerce, past president and national counselor of Boy Scout Council, Member of the local, Iowa and American Bar Associations. Member of St. Patrick's church in Iowa City. Married Margaret E. Schwertley of Missouri Valley, Iowa, in 1927. They have eight children: Betty, Barbara (Mrs. Francis Wagner), Dan, Katherine, John, Richard, Frances and Peggy. Served in Senate in 55th, 56th and 57th General Assemblies. Majority floor leader in 57th.



NOLAN, D. C., Iowa City Republican
25th Senatorial District—Johnson County

Born August 29, 1902, on a farm in Guthrie county, Iowa, son of Martin J. and Anna Hanley Nolan. Attended country school, high school at Perry, Iowa, and liberal arts and law school at Creighton university. Was superintendent of a chautauqua in 1924. Practiced law in Des Moines 1926 to 1931 and in Iowa City from 1931 to date. Past member of Board of Governors of Iowa Bar Association, past president of Iowa City Chamber of Commerce, past president and national counselor of Boy Scout Council. Member of the local, Iowa and American Bar Associations. Member of St. Patrick's church in Iowa City. Married Margaret E. Schwertley of Missouri Valley, Iowa, in 1927. They have eight children: Betty, Barbara, Dan, Katherine, John, Richard, Frances and Peggy. Elected to senate in 1952.



NOLAN, D. C., Iowa City Republican
25th Senatorial District—Johnson County

Born August 29, 1902, on a farm in Guthrie county, Iowa, son of Martin J. and Anna Hanley Nolan. Attended country school, high school at Perry, Iowa, and Liberal Arts and Law School at Creighton university, where he played center on the football team. Was superintendent of a chautauqua in 1924. Practiced law in Des Moines 1926 to 1931 and in Iowa City from 1931 to date. Past member of Board of Governors of Iowa Bar Association, past president of Iowa City Chamber of Commerce, past president and national counselor of Boy Scout Council. Member of the local, Iowa and American Bar Associations. Member of St. Patrick's church in Iowa City. Owns and operates several farms in Iowa. Married Margaret E. Schwertley of Missouri Valley, Iowa, in 1927. They have eight children: Betty, Barbara, Dan, Katherine, John, Richard, Frances and Peggy.