



LONG, Irving D., Manchester
Republican
**33rd (Old) Senatorial District—Buchanan
and Delaware Counties**

Born April 15, 1895, Delaware County, Iowa. Graduated from Manchester High School and the University of South Dakota. Married Ella Mae Cates of Manchester, Sept. 13, 1916. Practiced law in Manchester since 1921. Served as county attorney from 1923 to 1929, and mayor of Manchester from 1953 to 1957. Member of Masonic Lodge, Lions Club, Knights of Pythias, and Christian Church. Serving fourth term in senate.



LONG, Irving D., Manchester

Republican

33rd Senatorial District—Buchanan and Delaware Counties

Born April 15, 1895, Delaware county, Iowa. Graduated from Manchester high school and the University of South Dakota. Married Ella Mae Cates of Manchester, Sept. 13, 1916. Practiced law in Manchester since 1921. Served as county attorney from 1923 to 1929, and mayor of Manchester from 1953 to 1957. Member of Masonic Lodge, Lions Club, Knights of Pythias, and Christian Church. Serving fourth term in Senate.

LONG, Irving D., Manchester
Republican
**33rd Senatorial District—Buchanan and
Delaware Counties**

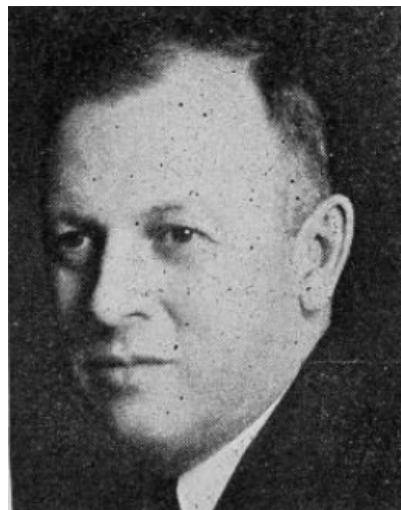
Born April 15, 1895, Delaware county, Iowa. Graduated from Manchester high school and the University of South Dakota. Married Ella Mae Cates of Manchester, September 13, 1916. Practiced law in Manchester since 1921. Served as county attorney from 1923 to 1929, and Mayor of Manchester from 1953 to 1957. Serving third term in Senate. Member of Masonic lodge, Lions club, Knights of Pythias, and Christian Church.



LONG, Irving D., Manchester
Republican
**33rd Senatorial District—Buchanan and
Delaware Counties**

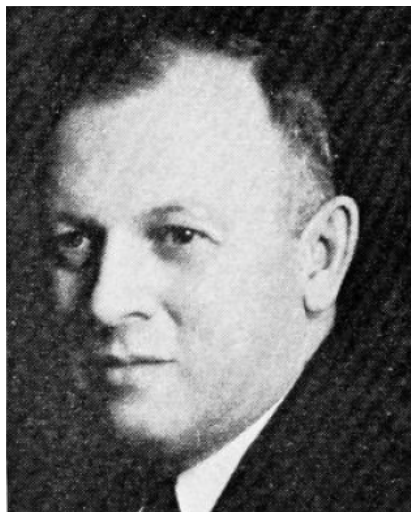
Born April 15, 1895, Delaware county, Iowa. Graduated from Manchester high school and the University of South Dakota. Married Ella Mae Cates of Manchester, September 13, 1916. Practiced law in Manchester since 1921. Served as County Attorney from 1923 to 1929 and Mayor of Manchester from 1953 to 1957. Serving third term in Senate. Member of Masonic lodge, Lions club, Knights of Pythias and Christian church.





**LONG, Irving D., Manchester Republican
33rd Senatorial District—Buchanan
and Delaware Counties.**

Son of Alvah D. and Carrie Carpenter Long, born in Delaware county, Iowa, April 15, 1894. Was graduated from Manchester high school and Law Department of University of South Dakota in 1917, admitted to practice law in Iowa in 1919. Has been employed in practice of law at Manchester since 1921. Delaware county attorney, 1923-1929. Married Ella Cates in 1916. Member of Christian church, Masonic lodge, Knights of Pythias, Lions, secretary-treasurer of Delaware County Bar association. Serving second term in Senate.



LONG, Irving D., Manchester Republican
33rd Senatorial District—Buchanan and
Delaware Counties.

Son of Alvah D. and Carrie Carpenter Long, born in Delaware county, Iowa, April 15, 1894. Was graduated from Manchester high school and Law Department of University of South Dakota in 1917, admitted to practice law in Iowa in 1919. Has been employed in practice of law at Manchester since 1921. Delaware County Attorney, 1923-1929. Married Ella Cates in 1916. Member of Christian church, Masonic lodge, Knights of Pythias, Lions, Secretary-Treasurer of Delaware County Bar Association. Serving second term in Senate.



LONG, Irving D., Manchester *Republican*
**33rd Senatorial District—Buchanan and Delaware
Counties**

Son of Alvah D. and Carrie Carpenter Long, born in Delaware county, Iowa, April 15, 1894. Graduated from Manchester high school and Law Department of University of South Dakota in 1917, admitted to practice law in Iowa in 1919. Has been employed in practice of law at Manchester since 1921. Delaware county attorney, 1923-1929. Married Ella Cates in 1916. Member of Christian church, Masonic lodge, Knights of Pythias, Lions, Secretary-Treasurer of Delaware County Bar Association. Serving first term in Senate.



LONG, Irving D., Manchester *Republican*

33rd Senatorial District—Buchanan and Delaware Counties

Son of Alvah D. and Carrie Carpenter Long, born in Delaware county, Iowa, April 15, 1894. Graduated from Manchester high school and Law Department of University of South Dakota in 1917, admitted to practice law in Iowa in 1919. Has been employed in practice of law at Manchester since 1921. Delaware county attorney, 1923-1929. Married Ella Cates in 1916. Member of Christian church, Masonic lodge, Knights of Pythias, Secretary-Treasurer of Delaware County Bar Association. Serving first term in senate.