



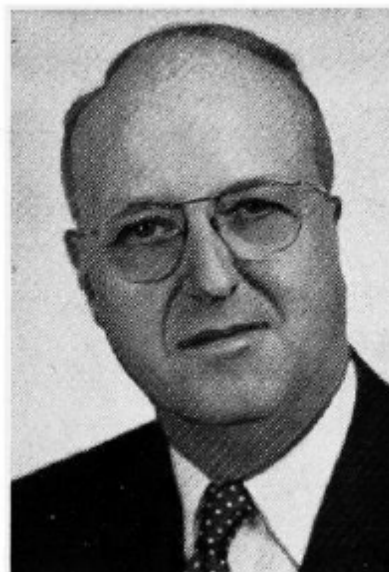
VANCE, Clifford M., Mount Pleasant
Republican

**Eighth Senatorial District—Henry and
Jefferson Counties**

Born Aug. 10, 1902, Henry County, son of William R. and Nellie Elliott Vance. University of Iowa, B.A., 1924; J.D., 1926; general law practice since 1926. Land owner and operator. Married Doris Chandler, Mt. Pleasant, Iowa. Son, Randall S. Vance, Marshalltown; daughter, Marilyn J. Beemblossom, Clarinda. Four grandchildren. County attorney, 1929-32. County, state and American Bar Associations. President of Henry county bar from 1942 to 1962. Board of governors of Iowa state bar, 1944-46. Rotarian past president; 32nd Degree Mason and Shriner. Member of the house of representatives in the 57th General Assembly. Member of the senate in the 59th, 60th, 60th Extra and 61st General Assemblies. President pro tempore of the senate in 60th and 60th Extra General Assembly. Chairman of the legislative budget and financial control committee, 1964.

VANCE, Clifford M., Mount Pleasant
Republican
Eighth Senatorial District—Henry and
Jefferson Counties

Born Aug. 10, 1902, Henry County, son of William R. and Nellie Elliott Vance. University of Iowa, B.A., 1924; J.D., 1926; general law practice since 1926. Land owner and operator. Married Doris Chandler, Mt. Pleasant, Iowa. Son, Randall S. Vance, Marshalltown; daughter, Marilyn J. Beemblossom, Clarinda. Four grandchildren. County attorney, 1929-32. County, state and American Bar Associations. President of Henry county bar from 1942 to 1962. Board of governors of Iowa state bar, 1944-46. Rotarian past president; 32nd Degree Mason and Shriner. Member of the house of representatives in the 57th General Assembly. Serving second term in senate and president pro tempore of senate in 60th General Assembly.



VANCE, Clifford M., Mount Pleasant
Republican

**10th Senatorial District—Henry and
Washington Counties**

Born Aug. 10, 1902, Henry county, son of William R. and Nellie Elliott Vance. University of Iowa, B.A., 1924; J.D., 1926; general law practice since 1926. Land owner and operator. Married Doris Chandler, Mt. Pleasant, Iowa. Son, Randall S. Vance, Marshalltown; daughter, Marilyn J. Beemblossom, Clarinda. Three grandchildren. County attorney, 1929-32. County, state and American Bar Associations. President of Henry county bar since 1942. Board of governors of Iowa state bar, 1944-46. Original incorporator of Insurance Plan Savings and Loan Association, president and counsel since 1937. Rotarian, past president; 32nd Degree Mason and Shriner. Member of the House of Representatives in the 57th General Assembly. Serving second session in Senate.



VANCE, Clifford M., Mount Pleasant
Republican
**10th Senatorial District—Henry and
Washington Counties**

Born August 10, 1902, Henry county, son of William R. and Nellie Elliott Vance. University of Iowa, B.A., 1924; J.D., 1926; general law practice since 1926. Land owner and operator. Married Doris Chandler, Mt. Pleasant, Iowa. Son, Randall S. Vance, Marshalltown; daughter, Marilyn J. Beemblossom, Clarinda. Three grandchildren. County attorney, 1929-32. County, state and American Bar Associations. President of Henry county bar since 1942. Board of Governors of Iowa state bar, 1944-46. Original incorporator of Insurance Plan Savings and Loan Association, president and counsel since 1937. Board of directors and counsel, Mount Pleasant Bank and Trust Company. Served on the following boards: Masonic Temple, City Planning Commission, Chamber of Commerce. Rotarian, past president. 32nd Degree Mason and Shriner. Member of the House of Representatives in the 57th G. A. Serving first term in Senate.





**VANCE, Clifford M., Mount Pleasant
Henry County
Republican**

Born August 10, 1902, Henry county, son of William R. and Nellie Elliott Vance. University of Iowa, B.A., 1924, J.D., 1926. General law practice since 1926. Land owner and operator. Married Doris Chandler. Son, Randall S. Vance, Marshalltown; daughter, Marilyn J. Vance, Cedar Rapids. Three grandchildren. County attorney 1929-32. County, state and American bar associations. President of Henry county bar since 1942. Member and chairman Henry county hospital trustees 14 years. Board of Governors of Iowa state bar 1944-46. Original incorporator of Insurance Plan Savings and Loan Association, vice president and counsel since 1937. Board of directors and counsel, Mount Pleasant Bank and Trust Company, Methodist church board, helped establish memorial foundation. Served on following boards: Masonic temple, City Planning commission, Golf and Country club, Chamber of Commerce. Rotary, past president. Former Republican county chairman. Mason, Zerapeth Consistory, Kaaba Shrine, O.E.S., White Shrine, Farm Bureau, Flinkbine Club, Elks. Serving first term.