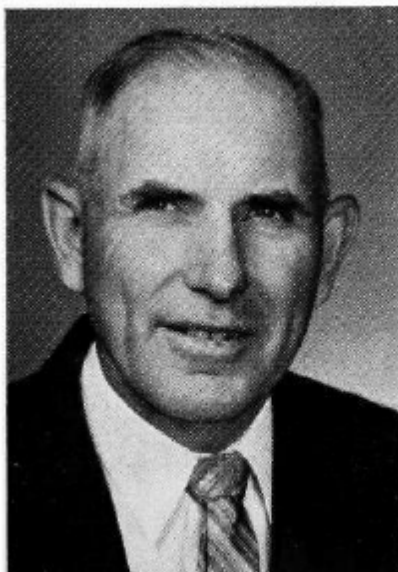


STEVENSON, M. Ross, Lime Springs
Howard and Mitchell Counties
Democrat

Born Sept. 1, 1906, and reared on a Howard County farm. Attended rural school in Howard County and Cresco High School. Married Laura I. Larsen of Elma, Iowa, in 1928. Six children: Mildred, elementary teacher; Harlan and Eugene, farming; Hollis, employed by International Business Machines of Rochester, Minn.; Lyle, employed by John Deere of Lime Springs; Norman, now serving with the armed forces in Turkey. Four grandchildren. Owns and operates a 280 acre farm. Member of the Methodist Church and the Iowa Farmers Union. Past director, rural school and Lime Springs Independent school. Past director and chairman, Farmers Co-op Feed Company of Lime Springs. Director, Iowa State Farmers Union board for several years. Served on Howard County Extension Council for five years; also worked with 4-H clubs. Serving third term.



STEVENSON, M. Ross, Lime Springs
Howard County
Democrat

Born Sept. 1, 1906, and reared on a Howard County farm. Attended rural school in Howard County and Cresco High School. Married Laura I. Larsen of Elma, Iowa, in 1928. Father of six children: Mildred, elementary teacher; Harlan and Eugene, farming; Hollis, employed by International Business Machines of Rochester, Minn.; Lyle and Norman, employed by John Deere of Lime Springs. Three grandchildren. Owns and operates a 280-acre farm. Member of the Methodist Church and the Iowa Farmers Union. Past director of rural school and Lime Springs Independent school. Past director and chairman of the Farmers Co-op Feed Co. of Lime Springs. Director of Iowa State Farmers Union board for several years. Served on Howard County Extension Council for five years, also worked with 4-H clubs. Serving second term.

STEVENSON, M. Ross, Lime Springs
Howard County
Democrat

Born Sept. 1, 1906, and reared on a Howard County farm. Attended rural school in Howard County and Cresco High School. Married Laura L. Larsen of Elma, Iowa, in 1928. Father of six children: Mildred, elementary teacher; Harlan, Eugene and Norman, farming; Hollis, employed by Merri-Gold of Rochester, Minn.; Lyle, employed by John Deere of Lime Springs. Three grandchildren. Owns and operates a 280-acre farm. Member of the Methodist Church and the Iowa Farmers Union. Past director of rural school and Lime Springs Independent school. Past director and chairman of the Farmers Co-op Feed Co. of Lime Springs. Was director of Iowa State Farmers Union board for several years. Served on Howard County Extension Council for five years, also worked with 4-H clubs. Serving first term.

