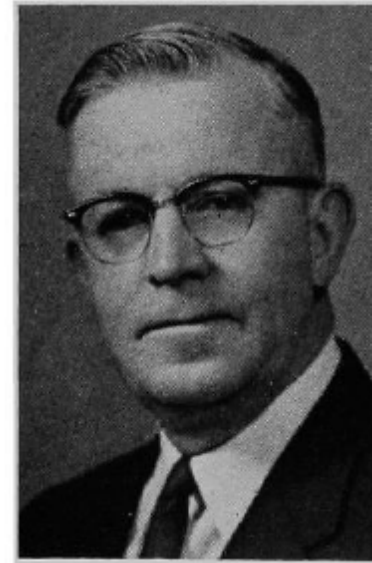


**HANSON, Arthur C., Inwood**  
**Lyon and Osceola Counties**  
Republican

Born Aug. 9, 1891, son of Henry J. and Olive Hanson. Educated in public schools and Iowa State University. Married Emma Helder in 1918; has three sons, Harland of Oakland, Calif., Eldon and Marlo of Inwood, Iowa, and ten grandchildren. Owns the farm which was his birthplace, and which is now operated by his son, Eldon. Veteran of World War I, past post and county commander of American Legion. Also served as chaplain. Active in Farm Bureau and cooperatives, community, county and state. Active member of Methodist Church in various official positions. Served as president of the school board, member and chairman of the board of supervisors. Elected to Gamma Sigma Delta (honorary society of agriculture) 1955, member of Kiwanis and Masonic Lodge. Now serving tenth term as representative. Member of budget and financial control committee four years. Speaker of the House, 56th G.A. Chairman tax revision committee of the 60th G.A.





**HANSON, Arthur C., Inwood**

**Lyon County**

**Republican**

Born Aug. 9, 1891, son of Henry J. and Olive Hanson. Educated in public schools and Iowa State University. Married Emma Helder in 1918; has three sons, Harland of Oakland, Calif., Eldon and Marlo of Inwood, Iowa, and ten grandchildren. Owns the farm which was his birthplace, and which is now operated by his son, Eldon. Veteran of World War I, past post and county commander of American Legion. Also served as chaplain. Active in Farm Bureau and cooperatives, community, county and state. Active member of Methodist Church in various official positions. Served as president of the school board, member and chairman of the board of supervisors. Elected to Gamma Sigma Delta (honorary society of agriculture) 1955, member of Kiwanis and Masonic Lodge. Now serving ninth term as representative. Member of budget and financial control committee four years. Speaker of the House, 56th G.A. Chairman tax revision committee of the 60th G.A.

**HANSON, Arthur C., Inwood**  
**Lyon County**  
Republican

Born Aug. 9, 1891, son of Henry J. and Olive Hanson. Educated in public schools and Iowa State University. Married Emma Helder in 1918, has three sons and 10 grandchildren. Owns the farm which was his birthplace and now operated as a father-son partnership with son Eldon. Veteran of World War I, past post and county commander of American Legion. Also served as chaplain. Active in Farm Bureau and cooperatives, community, county and state. Active member of Methodist Church in various official positions. Served as president of the school board, member and chairman of the board of supervisors. Elected to Gamma Sigma Delta (honorary society of agriculture) 1955, member of Kiwanis and Masonic Lodge. Now serving eighth term as representative. Member of budget and financial control committee four years. Speaker of the House, 56th General Assembly. Chairman ways and means committee, 59th General Assembly.



**HANSON, Arthur C., Inwood**  
Lyon County  
Republican

Born August 9, 1891, son of Henry J. and Olive Hanson. Educated in public schools and Iowa State College. Married Emma Helder in 1918, has three sons and ten grandchildren. Owns the farm which was his birthplace and now operated as a father-son partnership with son Eldon. Veteran of World War I, past post and county commander of American Legion. Also served as chaplain. Active in Farm Bureau and cooperatives, community, county and state. Active member of Methodist Church in various official positions. Served as president of school board, member and chairman board of supervisors. Elected to Gamma Sigma Delta 1955 (Honorary Society of Agriculture), member of Kiwanis and Masonic Lodge. Now serving 7th term as representative. Member of Budget and Financial Control Committee two years. Speaker of the House, 56th General Assembly. Chairman special committee on Legislative reapportionment 58th General Assembly.



**HANSON, Arthur C., Inwood Lyon County**  
Republican

Born on the farm where he now resides, August 9, 1891, son of Henry J. and Olive Hanson. Educated in public schools and at Iowa State College. Veteran of World War I. Chaplain and past post and county commander American Legion. Active in Farm Bureau and farm cooperatives in community, county, and state. Married Emma Helder in 1918. Has three sons and nine grandchildren. Lay leader and active member of the Methodist church. Has served as township assessor, president of school board, and chairman board of supervisors. Member of the budget and financial control committee 1955 and 1956. Now serving sixth term as Representative. House member 45th, 45th extra, 53rd, 54th, 55th, 56th and 57th General Assembly. Speaker of the House in the 56th General Assembly.





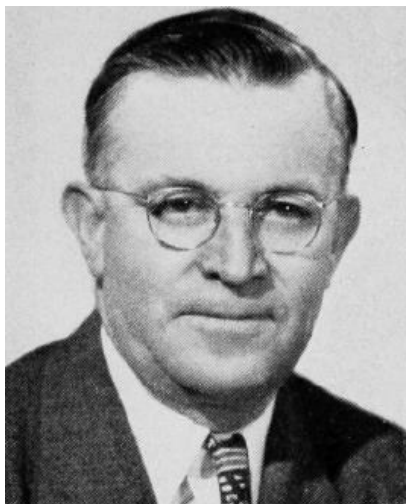
**HANSON, Arthur C., Inwood Lyon County  
Republican**

Born on the farm where he now resides, August 9, 1891. Educated in public schools and Iowa State College. Served with 209th Engineers in World War I. Chaplain and past post and county commander American Legion. Active in Farm Bureau, having served as director and president in county; also member state board and legislative representative Iowa Farm Bureau. Secretary and director Farmers Cooperative. Official weather observer 27 years. Married Emma Helder, 1918. Three sons, Harland, Oakland, Calif., assistant branch manager farm equipment company; Eldon and Marlo, farming, in partnership operation of Woodlawn Farm, a livestock and dairy farm. Six grandchildren. Member Masonic lodge. Active in Methodist church. Has served as township assessor, director and president of school board, county supervisor and chairman of board. Served as Representative from Lyon county 45th Regular, 45th Extra, 53rd, 54th and 55th General Assemblies.



**HANSON, Arthur C., Inwood, Lyon County**  
Republican

Born on the farm where he now resides, August 9, 1891. Educated in public schools and at Iowa State College. Served in World War I with 209th Engineers. Chaplain and past post and county commander American Legion. Active in Farm Bureau, having served as director and president in county; also voting delegate, member state board and legislative representative Iowa Farm Bureau. Official weather observer 25 years. Married Emma Helder 1918. Three sons, Harland, Oakland Calif., branch manager farm equipment company; Eldon and Marlo, in partnership operation of Woodlawn Farm, a livestock and dairy farm. Has five grandchildren. A Methodist and active in all church activities. Has served as township assessor, president of school board, and board of supervisors. Now serving third term as Representative having been a member of 45th regular, 45th Extra, 53rd and 54th General Assemblies.



**HANSON, Arthur C., Inwood Lyon County  
Republican**

Born on the farm where he now resides August 9, 1891. Educated in public schools and in agricultural course at Iowa State college. Served in World War I with 209th Engineers. Chaplain and past post and county commander American Legion. Secretary-treasurer Farmers Coop Elevator Association, Director, County president, Voting delegate, State executive committee, Farm Bureau, Official weather observer 25 years. Married Emma Helder July 25, 1918. Three sons, Harland at Merced, Calif., fieldman for farm machinery company; Eldon and Marlo, in partnership operation of Woodlawn Farm, a livestock and dairy farm. Has three grandchildren. A Methodist, serving as member board of stewards, adult bible class teacher, district lay leader. Has served as county assessor, president of school board and board of supervisors. Represented Lyon county in 45th regular and special sessions General Assembly.





**ARTHUR C. HANSON, Inwood.**—Representative from Lyon county, was born August 9, 1891, near Inwood, Iowa, on the farm where he now resides, his father being one of the pioneer settlers of Lyon county. Educated in rural schools and later completed sub-collegiate course in agriculture at Iowa State College in 1915. Has engaged in farming and feeding of live stock since that time. Entered army as recruit at Camp Forrest, Georgia, August 1, 1918, and served there and at Camp Sheridan, Alabama, with 209th engineers for six months. Married July 25, 1918, to Emma Helder and they have three sons: Harland, Eldon, and Marlo. Public activities include the following: township assessor ten years; president of Lyon township school board for past three years; president, secretary or director Lyon County Farmers Institute past 15 years; president Lyon County Farm Bureau 1928 and 1929, and chairman of legislative committee since that time; member Thorson Post No. 310, American Legion, and acted as chaplain since 1920, except one year as commander; member of official board of Methodist church and teacher of adult bible class. Serving first term in the legislature. A republican.