



TAYLOR, Ray - Steamboat Rock
District 9
Republican

Birth: June 4, 1923, Steamboat Rock. **Parents:** Leonard and Mary Taylor. **Education:** Graduate of Steamboat Rock schools; attended University of Northern Iowa and Baylor University. **Spouse:** Mary Elizabeth Allen. **Children:** 3 daughters; 1 son. **Activities:** Owner-operator of farm near Steamboat Rock. Member: First Baptist Church, Iowans Right-to-Work, American Legislative Exchange Council, Farm Bureau, Wildlife Club and board of Faith Baptist Bible College of Ankeny. Former chair, Hardin County Bicentennial Committee. Past member: Iowa Commission on Interstate Cooperation, Iowa College Student Aid Commission, Toastmasters, Board of Adjustment for Hardin County, R.E.C. Board, state board of American Cancer Society, Iowa Boundary Commission, Confidential Records Council, Steamboat Rock School Board, 15 years (12 years as president). **Term:** Sixth.

**TAYLOR, Ray - Steamboat Rock
District 9
Republican**

Birth: June 4, 1923, Steamboat Rock. **Parents:** Leonard and Mary Taylor. **Education:** Graduate of Steamboat Rock schools; attended University of Northern Iowa and Baylor University. **Spouse:** Mary Elizabeth Allen. **Children:** 3 daughters; 1 son. **Activities:** Owner-operator of farm near Steamboat Rock. Member: First Baptist Church, Iowa Commission on Interstate Cooperation, Iowans Right-to-Work, Iowa College Student Aid Commission, American Legislative Exchange Council, Farm Bureau, Wildlife Club, board of Faith Baptist Bible College of Ankeny. Former chair, Hardin County Bicentennial Committee. Past member: Toastmasters, Board of Adjustment for Hardin County, R.E.C. Board, state board of American Cancer Society, Iowa Boundary Commission, Confidential Records Council, Steamboat Rock School Board, 15 years (12 years as president). **Term:** Sixth.



**TAYLOR, Ray — Steamboat Rock
District 9
Republican**

Birth: June 4, 1923, Steamboat Rock. **Parents:** Leonard and Mary Taylor. **Education:** Graduate of Steamboat Rock schools; attended University of Northern Iowa and Baylor University. **Spouse:** Mary Elizabeth Allen. **Children:** 3 daughters; 1 son. **Activities:** Owner-operator of farm near Steamboat Rock. Partner in Karol Ann's Dress Shop, Eldora. Member: First Baptist Church, Iowa Commission on Interstate Cooperation, Iowans Right-to-Work, Iowa Boundary Commission, American Legislative Exchange Council, Farm Bureau, Wildlife Club, board of Faith Baptist Bible College of Ankeny. Former chair, Hardin County Bicentennial Committee. Past member: Toastmasters, Board of Adjustment for Hardin County, R.E.C. Board, state board of American Cancer Society, Confidential Records Council, Steamboat Rock School Board, 15 years (12 years as president). **Term:** Fourth.



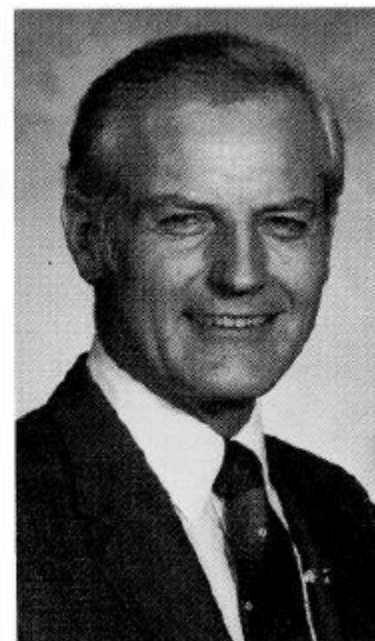
TAYLOR, Ray — Steamboat Rock
9th Senatorial District
Republican

Born June 4, 1923, Steamboat Rock, son of Leonard and Mary Taylor. Graduate of Steamboat Rock schools. Attended University of Northern Iowa and Baylor University. Married Mary Elizabeth Allen. One son, three daughters. Owner-operator of farm near Steamboat Rock. Partner in Karol Ann's dress shop, Eldora. Member of First Baptist Church. Member: Iowa Commission on Interstate Cooperation, Iowans Right-to-Work, Iowa Boundary Commission, American Legislative Exchange Council, Farm Bureau, Wildlife Club, board of Faith Baptist Bible College of Ankeny. Former chair, Hardin County Bicentennial Committee. Past member: Toastmasters, Board of Adjustment for Hardin County, R.E.C. Board, state board of American Cancer Society, Confidential Records Council. Former member, Steamboat Rock School Board, 15 years - 12 years as president. Fourth term.



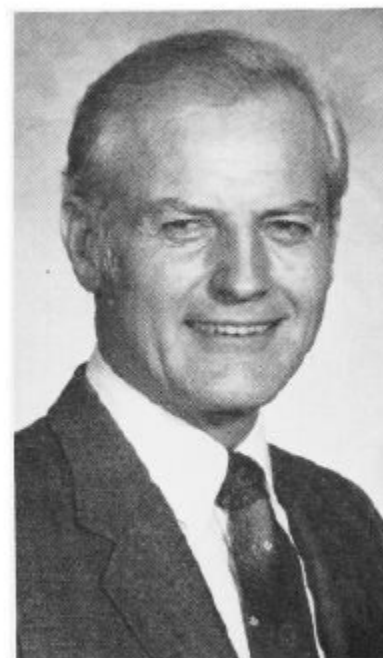
TAYLOR, Ray — Steamboat Rock
9th Senatorial District
Republican

Born June 4, 1923, Steamboat Rock, son of Leonard and Mary Taylor. Graduate of Steamboat Rock schools. Attended University of Northern Iowa and Baylor University. Married Mary Elizabeth Allen. One son, three daughters. Owner-operator of farm near Steamboat Rock. Partnership in Karol Ann's dress shop, Eldora. Member of First Baptist Church. Member: state board of American Cancer Society, Farm Bureau, Wildlife Club, board of Faith Baptist Bible College of Ankeny, Confidential Records Board, Iowa Commission on Interstate Cooperation, American Legislative Exchange Council and Boundary Committee. Former chair, Hardin County Bicentennial Committee. Past member: Toastmasters, Board of Adjustment for Hardin County, R.E.C. Board. Former member, Steamboat Rock School Board, 15 years - 12 years as president. Fourth term.



**TAYLOR, Ray — Steamboat Rock
9th Senatorial District
Republican**

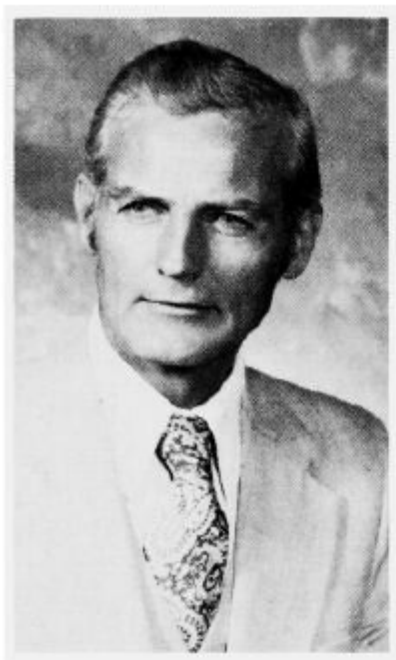
Born June 4, 1923, Steamboat Rock, son of Leonard and Mary Taylor. Graduate of Steamboat Rock schools. Attended University of Northern Iowa and Baylor University. Married Mary Elizabeth Allen. One son, three daughters. Owner-operator of farm near Steamboat Rock. Partnership in Karol Ann's dress shop, Eldora. Member of First Baptist Church. Member: state board of American Cancer Society, Farm Bureau, Wildlife Club, board of Faith Baptist Bible College of Ankeny, Confidential Records Board, Iowa Commission on Interstate Cooperation, American Legislative Exchange Council and Boundary Committee. Former chair, Hardin County Bicentennial Committee. Past member: Toastmasters, Board of Adjustment for Hardin County, R.E.C. Board. Former member, Steamboat Rock School Board, 15 years - 12 years as president. Ranking member of Small Business and Economic Development and Ethics committees. Member of Agriculture, Education, Social Services Appropriations Subcommittee, 70th General Assembly. Fourth term.



**TAYLOR, Ray — Steamboat Rock
5th Senatorial District
Republican**

Born June 4, 1923, Steamboat Rock, son of Leonard and Mary Taylor. Graduate of Steamboat Rock schools. Attended U.N.I. and Baylor University. Married Mary Elizabeth Allen. One son, three daughters. Owner-operator of farm near Steamboat Rock. Owner of Karol Ann's dress shop, Eldora. Member of First Baptist Church. Member: state board of American Cancer Society, Farm Bureau, Wildlife Club, board of Faith Baptist Bible College of Ankeny, Confidential Records Board, Legislative Council, American Legislative Exchange Council, and Boundary Committee. Former chairman, Hardin County Bicentennial Committee. Past member: Toastmasters, Board of Adjustment for Hardin County, R.E.C. Board. Former member, Steamboat Rock School Board for 15 years - 12 years as president. Served in the 65th, 66th, 67th and 68th general assemblies. Chairman of Agriculture and Ethics committees. Member: Education, Judiciary, Ways and Means, and Appropriations subcommittee in the 69th General Assembly.





TAYLOR, Ray, Steamboat Rock
5th Senatorial District
Republican

Born June 4, 1923, Steamboat Rock, son of Leonard and Mary Taylor. Graduate of Steamboat Rock schools. Attended U.N.I. and Baylor University. Married Mary Elizabeth Allen. One son, three daughters. Owner-operator of farm near Steamboat Rock. Owner of Karol Ann's dress shop, Eldora. Member of First Baptist Church. Member of State Board of American Cancer Society, Farm Bureau, Wildlife Club, Board of Faith Baptist Bible College of Ankeny, R.E.C., Confidential Records Board, Legislative Council, Legislative Fiscal Committee, Boundary Committee. Past member of Hardin County Bicentennial Committee Chairman, Toastmasters, Board of Adjustment for Hardin County, Steamboat Rock School Board for 15 years, 12 years as President. Served in the 65th, 66th, and 67th G.A.



TAYLOR, Ray, Steamboat Rock
5th Senatorial District
Republican

Born June 4, 1923, Steamboat Rock, son of Leonard and Mary Taylor. Graduate of Steamboat Rock schools. Attended U.N.I. and Baylor University. Married Mary Elizabeth Allen. One son, three daughters. Owner-operator of farm near Steamboat Rock. Owner of Karol Ann's dress shop, Eldora. Member of First Baptist Church. Member of State Board of American Cancer Society, Farm Bureau, Wildlife Club, Advisory Board of Faith Baptist Bible College of Ankeny, R.E.C., Hardin County Bicentennial Chairman, Confidential Records Board. Past member of Toastmasters, Board of Adjustment for Hardin County, Steamboat Rock School Board for 15 years, 12 years as President. Served in the 65th and 66th G.A.



TAYLOR, Ray, Steamboat Rock

Republican

5th Senatorial District

Born June 4, 1923, Steamboat Rock, son of Leonard and Mary Taylor. Attended Steamboat Rock schools, UNI, Baylor University. Married Mary Allen, Eldora. One son, three daughters. Owner-operator of farm near Steamboat Rock. Member First Baptist Church of Eldora, deacon, Sunday school teacher, and choir director. Member Farm Bureau, REC board, Toastmasters, State Board of American Cancer Society, Board of Adjustment for Hardin County, and local school board. Chairman Hardin County Chapter American Cancer Society and Hardin County Bicentennial Commission. Advisory board of Faith Baptist Bible College, Ankeny, Iowa. One term in the Iowa Senate 1973-1974.



TAYLOR, Ray, Steamboat Rock
Republican

5th Senatorial District

Born June 4, 1923, Steamboat Rock. Attended Steamboat Rock Schools, UNI, and Baylor University. Married Mary Allen of Eldora. One son, three daughters. Owner-operator of farm near Steamboat Rock. Member First Baptist Church of Eldora deacon, Sunday school teacher, and choir director. Member Farm Bureau, REC board, Toastmasters, Hardin County Chapter Chairman American Cancer Society. Member State Board of American Cancer Society, Board of Adjustment for Hardin County, and local School Board.