

SPEAR, Clay R. - Wever
District 99
Democrat



Birth: June 23, 1916, Davenport. **Death:** January 27, 1993, Des Moines. **Parents:** Ralph and Bertha Spear. **Education:** Graduated Davenport High School, 1934; B.A., St. Ambrose College, 1941; M.A., Drake University, 1973. **Spouse:** Dorothy Trout, 1940. **Children:** 3. **Grandchildren:** 6. **Activities:** Postal clerk at Davenport, 1935-1942. Postal inspector, 1942-at Huron, South Dakota; Hannibal, Missouri, and Burlington, 1942-1966. Postal service officer in Des Moines, 1966 until retirement in 1971. Member: Presbyterian Church, League of Women Voters, Common Cause, Association for Retarded Citizens, NAACP, Birthright, National Wildlife Federation, Iowa Natural Heritage Foundation, Sierra Club, American Association of Retired Persons, National Association of Retired Federal Employees, Fort Madison Chamber of Commerce, Fort Madison Art Center, Friends of Old Fort Madison, Friends of the Burlington Library, and North Lee County, Des Moines County, and Iowa Historical Societies. **Term:** Tenth.



**SPEAR, Clay R. - Burlington
District 61
Democrat**

Birth: June 23, 1916, Davenport. **Parents:** Ralph and Bertha Spear. **Education:** Graduated Davenport High School, 1934; B.A., St. Ambrose College, 1941; M.A., Drake University, 1973. **Spouse:** Dorothy Trout, 1940. **Children:** 3. **Grandchildren:** 6. **Activities:** Postal clerk at Davenport, 1935-1942. Postal inspector, 1942-1966, Huron, South Dakota; Hannibal, Missouri, and Burlington. Postal service officer in Des Moines, 1966 until retirement in 1971. Member: Presbyterian Church, League of Women Voters, Common Cause, Association for Retarded Citizens, NAACP, Birthright, National Wildlife Federation, Iowa Natural Heritage Foundation, Sierra Club, American Association of Retired Persons, National Association of Retired Federal Employees, and North Lee County, Des Moines County, and Iowa Historical Societies. **Term:** Ninth.

**SPEAR, Clay R. - Burlington
District 61
Democrat**

Birth: June 23, 1916, Davenport. **Parents:** Ralph and Bertha Spear. **Education:** Graduated Davenport High School, 1934; B.A., St. Ambrose College, 1941; M.A., Drake University, 1973. **Spouse:** Dorothy Trout, 1940. **Children:** 3. **Grandchildren:** 6. **Activities:** Postal clerk at Davenport, 1935-1942. Postal inspector, 1942-1966, Huron, South Dakota; Hannibal, Missouri, and Burlington. Postal service officer in Des Moines, 1966 until retirement in 1971. Member: Presbyterian Church, League of Women Voters, Common Cause, Association for Retarded Citizens, NAACP, Birthright, National Wildlife Federation, Iowa Natural Heritage Foundation, American Association of Retired Persons, National Association of Retired Federal Employees, and North Lee County, Des Moines County, and Iowa Historical Societies. **Term:** Eighth.





**SPEAR, Clay R. — Burlington
District 61
Democrat**

Born June 23, 1916, in Davenport, son of Ralph and Bertha Spear. Graduated Davenport High School, 1934. B.A., Saint Ambrose College, 1941. M.A., Drake University, 1973. Postal clerk at Davenport, 1935-42. Postal inspector, 1942-66, Huron, S.D.; Hannibal, Mo.; and Burlington. Postal service officer in Des Moines, 1966 until retirement in 1971. Married Dorothy Trout, 1940. Three children and six grandchildren. Member: Presbyterian Church, League of Women Voters, Common Cause, Association for Retarded Citizens, NAACP, Birthright, National Wildlife Federation, American Association of Retired Persons, National Association of Retired Federal Employees, and North Lee County, Des Moines County and Iowa historical societies. Seventh term.

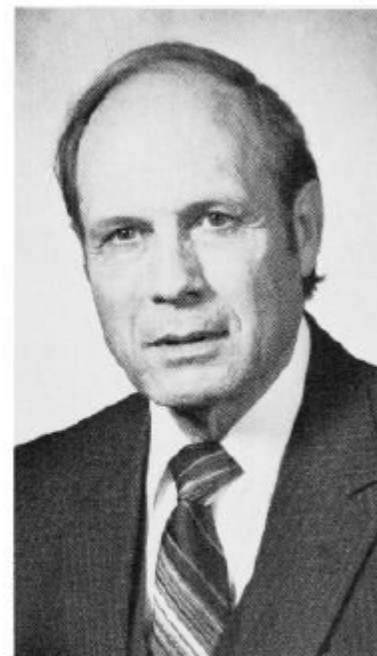
SPEAR, Clay R. — Burlington
District 61
Democrat

Born June 23, 1916, in Davenport, son of Ralph and Bertha Spear. Graduated Davenport High School, 1934. B.A., Saint Ambrose College, 1941. M.A., Drake University, 1973. Postal clerk at Davenport, 1935-42. Postal inspector, 1942-66, Huron, S.D.; Hannibal, Mo.; and Burlington. Postal service officer in Des Moines, 1966 until retirement in 1971. Married Dorothy Trout, 1940. Children: Diantha, Jonathan and Ann. Member: Presbyterian Church, League of Women Voters, Common Cause, Association for Retarded Citizens, NAACP, Birthright, National Wildlife Federation, American Association of Retired Persons, National Association of Retired Federal Employees, and North Lee County, Des Moines County and Iowa historical societies. Sixth term.



SPEAR, Clay R. — Burlington
District 61
Democrat

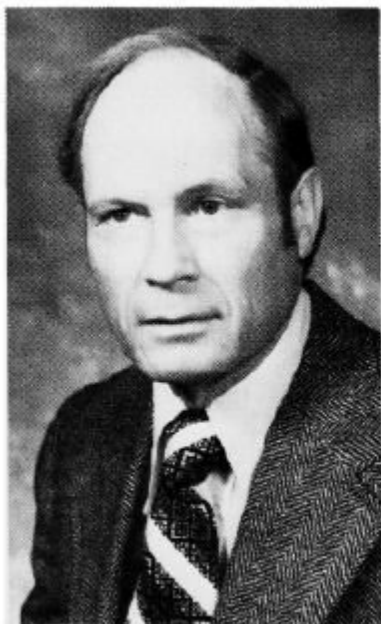
Born June 23, 1916, in Davenport, son of Ralph and Bertha Spear. Graduated Davenport High School, 1934. B.A., Saint Ambrose College, 1941. M.A., Drake University, 1973. Postal clerk at Davenport, 1935-42. Postal inspector, 1945-66, Huron, S.D.; Hannibal, Mo.; and Burlington. Postal service officer in Des Moines, 1966 until retirement in 1971. Married Dorothy Trout, 1940. Children: Diantha, Jonathan and Ann. Member: Presbyterian Church, League of Women Voters, Common Cause, Association for Retarded Citizens, NAACP, Birthright, National Wildlife Federation, American Association of Retired Persons, National Association of Retired Federal Employees and North Lee County, Des Moines County and Iowa historical societies. Fifth term.





SPEAR, Clay R. — Burlington
District 85
Democrat

Born June 23, 1916, in Davenport, son of Ralph and Bertha Spear. Graduated Davenport High School, 1934. B.A., Saint Ambrose, 1941. M.A., Drake University, 1973. Postal clerk at Davenport, 1935-42. Postal inspector, 1945-66 at Huron, S.D.; Hannibal, Mo.; and Burlington. Postal service officer at Des Moines, 1966 until retirement in 1971. Married Dorothy Trout, 1940. Children: Diantha, Jonathan and Ann. Member: Presbyterian Church, League of Women Voters, NAACP, Common Cause, A.A.R.P., National Association of Retired Federal Employees, Saint Ambrose and Drake Alumni. Member, North Lee County, Des Moines County, and Iowa Historical Societies. Fourth term.



SPEAR, Clay R., Burlington
District 85
Democrat

Born June 23, 1916, in Davenport, son of Ralph and Bertha Spear. Graduated Davenport High School, 1934. B.A., Saint Ambrose, 1941. M.A., Drake, 1973. Postal clerk at Davenport 1935-1942. Postal inspector 1942-1966 at Huron, S.D., Hannibal, Mo., and Burlington. Postal service officer at Des Moines 1966 until retirement in 1971. Married Dorothy Trout, 1940. Children: Diantha, Jonathan, Ann. Member: Presbyterian Church, League of Women Voters, NAACP, Common Cause, A.A.R.P., National Association of Retired Federal Employees, National Wildlife Federation, Saint Ambrose Alumni, Drake Alumni, and North Lee County, Des Moines County, and Iowa Historical Societies. Third term.

SPEAR, Clay R., Burlington
District 85
Democrat

Born June 23, 1916, in Davenport, son of Ralph and Bertha Spear. Graduated Davenport High School, 1934. B.A. Saint Ambrose, 1941. M.A., Drake, 1974. Postal Clerk at Davenport 1933-1942. Postal Inspector 1942-1966 at Huron, S.D., Hannibal, Mo., and Burlington. Postal Service Officer at Des Moines 1966 until retirement in 1971. Married Dorothy Trout, 1940. Children: Diantha, Ann, Jonathan. Member: Presbyterian Church, League of Women Voters, NAACP, Common Cause, National Association of Retired Federal Employees, Iowa Wildlife Federation, Saint Ambrose Alumni, Drake Alumni, and North Lee County, Des Moines County, and Iowa Historical Societies. Second term.



SPEAR, Clay R., Burlington
District 85
Democrat

Born June 23, 1916, in Davenport, son of Ralph and Bertha (Poston) Spear. Graduated Davenport High School 1934. B.A. Saint Ambrose 1941. Postal clerk at Davenport 1935-1942. Postal inspector 1942-1966 at Huron, S. D., Hannibal, Mo., and Burlington. Postal service officer in Des Moines 1966-1971. Master of Arts in teaching of the social sciences at Drake. Substitute teacher at Burlington. Married Dorothy Trout, 1940. Children: Diantha Jane, Ann Donegal, Jonathan Paul. Member Presbyterian Church, Common Cause, Fort Madison League of Women Voters, NAACP, National Association of Retired Federal Employees, Iowa Wildlife Federation, Saint Ambrose Alumni, Drake Alumni, and North Lee County, Des Moines County, and Iowa Historical Societies. First term.

