

**PRIEBE, Berl Eastman - Algona**  
**District 8**  
Democrat



**Birth:** May 31, 1918, Lone Rock. **Parents:** Clarence and Amy Bond Priebe. **Education:** Graduated Bancroft High School, 1935. **Spouse:** Madelyn Paetz, 1938. **Children:** 2 daughters: Constance (deceased) and Paula; 1 son: Gary. **Profession and Activities:** Farmer and livestock producer. Member: Lutheran Church, Izaak Walton League, National Rifle Association, Pheasants Forever, Ducks Unlimited, Kossuth County Beef and Pork Producers, Iowa State Beef and Pork Producers, Iowa State and American Angus Associations, I.T.B.O.A., Iowa Greyhound Association, Farm Bureau, Cooperative Elevators, Rural Electric Cooperatives, Iowa and National Corn Growers and Soybean Producers. Former president, Kossuth County Fair. 4-H leader. Awards: National Jewish Tree of Life Award for work in conservation and agriculture; inducted to Kentucky Colonel. Chair, National Administrative Rules Committee. Democratic state convention delegate. Assistant majority leader, 66th General Assembly. Served two terms in Iowa House. **Term:** Sixth.

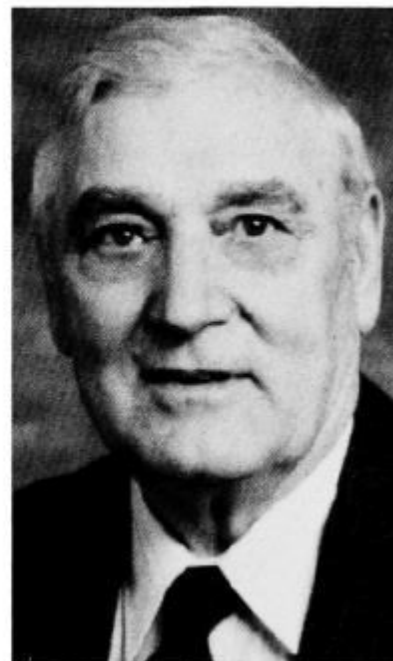
**PRIEBE, Berl Eastman - Algona**  
**District 8**  
Democrat



**Birth:** May 31, 1918, Lone Rock. **Parents:** Clarence and Amy Bond Priebe. **Education:** Graduated Bancroft High School, 1935. **Spouse:** Madelyn Paetz, 1938. **Children:** 2 daughters: Constance and Paula; 1 son, Gary. **Activities:** Farmer and livestock producer. Member: Lutheran Church, Izaak Walton League, National Rifle Association, Pheasants Forever, Ducks Unlimited, Kossuth County Beef and Pork Producers, Iowa State Beef and Pork Producers, Iowa State and American Angus Associations, I.T.B.O.A., Iowa Greyhound Association, Farm Bureau, Cooperative Elevators, Rural Electric Cooperatives, Iowa and National Corn Growers and Soybean Producers, and numerous other agriculture coops and affiliates. President: Kossuth County Fair. 4-H leader. Democratic state convention delegate. Assistant majority leader, 66th General Assembly. Served two terms in Iowa House. **Term:** Sixth.

**PRIEBE, Berl Eastman - Algona  
District 8  
Democrat**

**Birth:** May 31, 1918, Lone Rock. **Parents:** Clarence and Amy Bond Priebe. **Education:** Graduated Bancroft High School, 1935. **Spouse:** Madelyn Paetz, 1938. **Children:** 2 daughters: Constance and Paula; 1 son, Gary. **Activities:** Farmer. Member: Lutheran Church, Izaak Walton League, gun club, saddle club, Kossuth County Beef and Pork Producers, Iowa State Beef and Pork Producers, Iowa State and American Angus Associations, Farm Bureau, Cooperative Elevators, Rural Electric Cooperative. President, Kossuth County Fair Board. 4-H leader. Democratic state convention delegate. Assistant majority leader, 66th General Assembly. Served 2 terms in Iowa House. **Term:** Fifth.





**PRIEBE, Berl Eastman — Algona  
District 8  
Democrat**

**Birth:** May 31, 1918, Lone Rock. **Parents:** Clarence and Amy Bond Priebe. **Education:** Graduated Bancroft High School, 1935. **Spouse:** Madelyn Paetz, 1938. **Children:** 2 daughters: Constance and Paula; 1 son, Gary. **Activities:** Farmer. Member: Lutheran Church, Izaak Walton League, gun club, saddle club, Kossuth County Beef and Pork Producers, Iowa State Beef and Pork Producers, Iowa State and American Angus Associations, Farm Bureau, Cooperative Elevators, Rural Electric Cooperative. President, Kossuth County Fair Board. 4-H leader. Democratic state convention delegate. Assistant majority leader, 66th General Assembly. Served 2 terms in Iowa House. **Term:** Fifth.



**PRIEBE, Berl Eastman — Algona  
8th Senatorial District  
Democrat**

Born May 31, 1918, in Lone Rock, son of Clarence and Amy Bond Priebe. Graduated Bancroft High School, 1935. Married Madelyn Paetz, 1938. Children: Constance, Paula and Gary. Farmer. Member: Lutheran Church, Izaak Walton League, gun club, saddle club, Kossuth County Beef and Pork Producers, Iowa State Beef and Pork Producers, Iowa State and American Angus associations, Farm Bureau, Cooperative Elevators, Rural Electric Cooperative; President, Kossuth County Fair Board. 4-H leader. Democratic state convention delegate. Assistant majority leader, 66th General Assembly. Representative, two terms. Fourth term in Senate.



**PRIEBE, Berl Eastman — Algona  
8th Senatorial District  
Democrat**

Born May 31, 1918, in Lone Rock, son of Clarence and Amy Bond Priebe. Graduated Bancroft High School, 1935. Married Madelyn Paetz, 1938. Children: Constance, Paula and Gary. Farmer. Member: Lutheran Church, Izaak Walton League, gun club, saddle club, Kossuth County Beef and Pork Producers, Iowa State Beef and Pork Producers, Iowa State and American Angus associations, Farm Bureau, Cooperative Elevators, Rural Electric Cooperative; president, Pres. of Kossuth County Fair Board. Director, North Iowa Fair; 4-H leader. Democratic state delegate. Assistant majority leader, 66th General Assembly. Representative, two terms. Fourth term in Senate.

**PRIEBE, Berl Eastman — Algona  
8th Senatorial District  
Democrat**

Born May 31, 1918, in Lone Rock, son of Clarence and Amy Bond Priebe. Graduated Bancroft High School, 1935. Married Madelyn Paetz, 1938. Children: Constance, Paula and Gary. Farmer. Member: Lutheran Church, Izaak Walton League, gun club, saddle club, Kossuth County Beef and Pork Producers, Iowa State Beef and Pork Producers, Iowa State and American Angus associations, Farm Bureau, Cooperative Elevators, Rural Electric Cooperative; president, Kossuth County Fair Board. Director, North Iowa Fair; 4-H leader. Democratic state delegate. Assistant majority leader, 66th General Assembly. Representative, two terms. Third term in Senate.

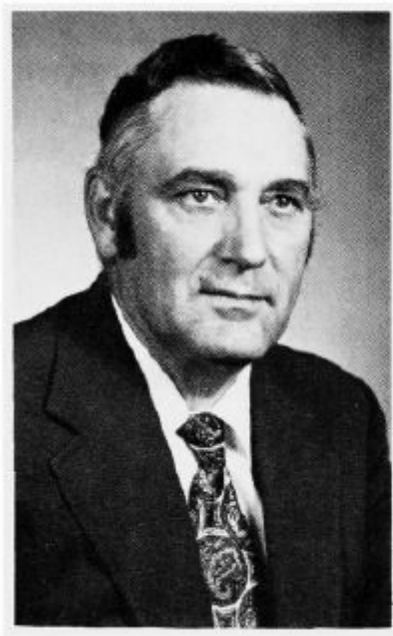


**PRIEBE, Berl Eastman — Algona**  
**4th Senatorial District**  
Democrat

Born May 31, 1918, in Lone Rock, son of Clarence and Amy Bond Priebe. Graduated Bancroft High School, 1935. Married Madelyn Paetz, 1938. Children: Constance, Paula and Gary. Farmer. Member: Lutheran Church, Izaak Walton League, Gun Club, Saddle Club, Algona Country Club, Kossuth County Beef and Pork Producers, Iowa State Beef and Pork Producers, Iowa State and American Angus Association, Farm Bureau, Cooperative Elevators, Rural Electric Cooperative, and Insurance Mutual. President, Kossuth County Fair Board. Director, North Iowa Fair; 4-H leader. Democratic state delegate. Assistant majority leader, 66th General Assembly. Representative, two terms. Third term in Senate, eight years.







**PRIEBE, Berl Eastman, Algona**  
**4th Senatorial District**  
Democrat

Born May 31, 1918 in Lone Rock, son of Clarence and Amy Bond Priebe. Graduated Bancroft High School 1935. Married Madelyn Paetz, 1938. Children: Constance, Paula, Gary. Farmer. Member Lutheran Church, Izaak Walton League, Gun Club, Saddle Club, Algona Country Club, Kossuth County Beef and Pork Producers, Iowa State Beef and Pork Producers, Iowa State and American Angus Association, Farm Bureau, Cooperative Elevators, Rural Electric Cooperative, Insurance Mutual. President Kossuth County Fair Board. Director North Iowa Fair, 4-H Leader. Democratic state delegate. Assistant Majority Leader 66th General Assembly.



**PRIEBE, Berl Eastman, Algona  
4th Senatorial District**

Democrat

Born May 31, 1918, in Lone Rock, son of Clarence and Amy Bond Priebe. Graduated Bancroft High School 1935. Married Madelyn Paetz, 1938. Children: Constance, Paula, Gary. Farmer. Member Lutheran Church, Izaak Walton League, Gun Club, Saddle Club, Algona Country Club, Kossuth County Beef and Pork Producers, Iowa State Beef and Pork Producers, Iowa State and American Angus Association, Farm Bureau, Cooperative Elevators, Rural Electric Cooperative, Insurance Mutual. President Kossuth County Fair Board. Director North Iowa Fair. 4-H Leader. Delegate to American Angus Association, Democratic state delegate. Assistant Majority Leader 66th General Assembly.



**PRIEBE, Berl Eastman, Algona**

Democrat

**4th Senatorial District**

Born May 31, 1918, in Lone Rock, son of Clarence and Amy Bond Priebe. Graduated Bancroft High School 1935. Married Madelyn Paetz, 1938. Children: Constance, Paula, Gary. Farming land homesteaded by members of family. Member Lutheran Church, Izaak Walton League, Gun Club, Saddle Club, Algona Country Club, Kossuth County Beef and Pork Producers, Iowa State Beef and Pork Producers, Iowa State and American Angus Association, Farm Bureau, Cooperative Elevators, Rural Electric Cooperative, Insurance Mutual. President Kossuth County Fair Board. Director North Iowa Fair. 4-H Leader. Delegate to American Angus Association, Democratic state delegate. Member of 63rd, 64th, 65th General Assemblies, Assistant Majority Leader 66th G.A.



**PRIEBE, Berl Eastman, Algona**  
Democrat

**4th Senatorial District**

Born May 31, 1918, in Lone Rock, son of Clarence and Amy Priebe. Graduated Bancroft High School 1935. Married Madelyn Paetz in Minnesota 1938. Children: Constance, Paula, and Gary. Farming land homesteaded by members of family. Breeder purebred Angus cattle. Member Lutheran Church, Izaak Walton league, Gun Club, Algona Pilots Club, Seneca Saddle Club, Algona Golf and Country Club, Kossuth County Beef and Pork Producers, Iowa Beef Producers, Iowa State Angus Assn., American Angus Assn., Farm Bureau, Co-operative Elevators, Rural Electric Cooperative, Insurance Mutual. President Kossuth County Fair Board. Director North Iowa Fair Board. Former chairman Kossuth County Barbeque Committee. 4-H leader. Delegate to American Angus Assn., Democratic state delegate. Cattle and 4-H judge at fairs and shows. Former school board member, ASC committeeman. Two terms Iowa House. Assistant Minority Leader 64th G.A. First term Iowa Senate.

**PRIEBE, Berl Eastman, Algona  
Kossuth County  
Democrat**

Born May 31, 1918, in Lone Rock, Iowa, son of Clarence and Amy Priebe. Graduated Bancroft High School 1935. Married Madelyn Paetz in Minnesota 1938. Children: Constance Priebe Barth, Paula Priebe Dixon and Gary. Farming land homesteaded by members of family. Breeder of purebred Angus cattle. Member Lutheran Church, Izaak Walton League, Gun Club, Algona Pilots Club, Seneca Saddle Club, Algona Golf and Country Club, Kossuth County Beef Producers, Iowa Beef Producers, Iowa State Angus Assn., American Angus Assn., Farm Bureau, Cooperative Elevators, Rural Electric Cooperative, school board, Insurance Mutual, president Kossuth County Fair Board, chairman Kossuth County Barbeque Committee. ASC committeeman, 4-H leader, delegate to American Angus Assn. meetings, Democratic party state delegate, cattle and 4-H judge at fairs and shows. Assistant Minority Leader. Second term.



**PRIEBE, Bert Eastman, Algona**

**Kossuth County**

Democrat

Born May 31, 1918, in Lone Rock, Iowa, son of Clarence and Amy Priebe. Graduated from Bancroft High School 1935. Married Madelyn Paetz in Minnesota in 1938. Children: Constance Priebe Barth, 29; Paula Priebe Dixon, 28; and Gary, 25. Farming land homesteaded by members of family. Breeder of purebred Angus cattle. Member Lutheran Church, Izaak Walton League, Gun Club, Algona Pilots Club, Seneca Saddle Club, Algona Golf and Country Club, Kossuth County Beef Producers, Iowa Beef Producers, Iowa State Angus Assn., American Angus Assn., Farm Bureau, Cooperative Elevators, Rural Electric Cooperative, school board, Insurance Mutual, president Kossuth County Fair Board, chairman Kossuth County Barbeque Committee. ASC committeeman, 4-H leader, delegate to American Angus Assn. meetings, Democratic party state delegate, cattle and 4-H judge at fairs and shows. Serving first term.

