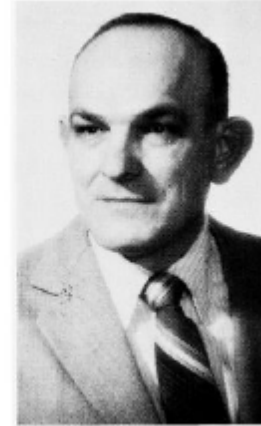


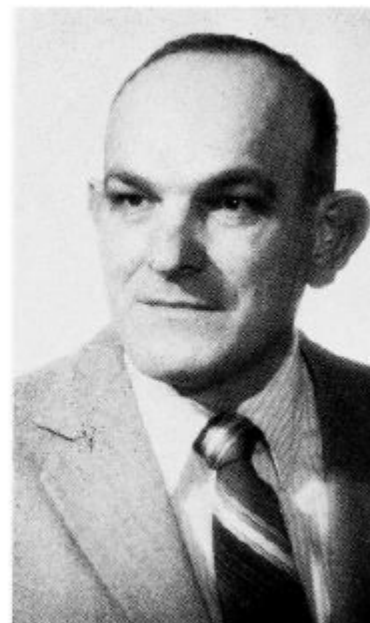
**PAVICH, Emil S. - Council Bluffs
District 100
Democrat**

Birth: July 30, 1931, Council Bluffs. **Parents:** Guy and Josephine (Pavelich) Pavich. **Education:** Graduated from Thomas Jefferson High School, 1949. **Military service:** U.S. Army, 1952-1954. **Activities:** Retired employee of Kellogg Company. Member: Grain Millers Local 50, Croatjan Cultural Club, Southside Neighborhood Organization, County Democratic committee, American Political Items Collectors, Pottawattamie and state historical societies, and the Catholic Church. Pottawattamie County Democratic chair, 1966-1974. **Term:** Ninth.



**PAVICH, Emil S. — Council Bluffs
District 100
Democrat**

Birth: July 30, 1931, Council Bluffs. **Parents:** Guy and Josephine (Pavelich) Pavich. **Education:** Graduated from Thomas Jefferson High School, 1949. **Military service:** U.S. Army, 1952-1954. **Activities:** Retired employee of Kellogg Company. Member: Grain Millers Local 50, Central-Labor Union, Southside Neighborhood Organization, County Democratic committee, American Political Items Collectors, Pottawattamie and state historical societies, and the Catholic Church. Pottawattamie County Democratic chair, 1966-1974. **Term:** Eighth.



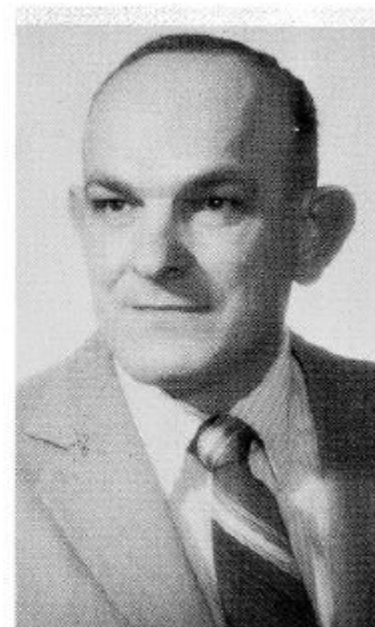


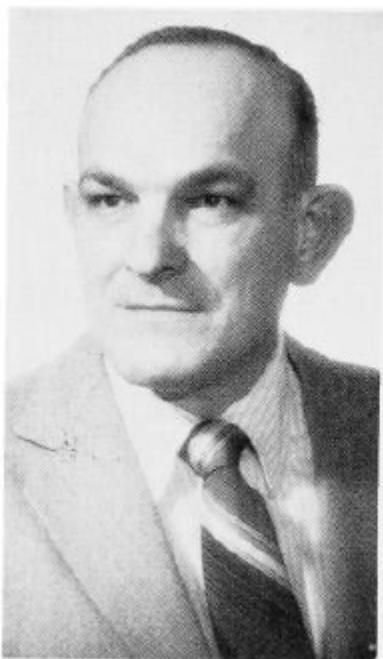
**PAVICH, Emil S. — Council Bluffs
District 100
Democrat**

Born July 30, 1931, in Council Bluffs, son of Guy and Josephine (Pavelich) Pavich. Graduated from Thomas Jefferson High School, 1949. U.S. Army, 1952-54. Employee of Kellogg Company. Member of Grain Millers Local 50, Central-Labor Union and Southside Neighborhood Organization. Pottawattamie County Democratic chairman, 1966-74. Member: county Democratic committee; American Political Items Collectors; Pottawattamie and state historical societies. Catholic. Seventh term.

**PAVICH, Emil S. — Council Bluffs
District 100
Democrat**

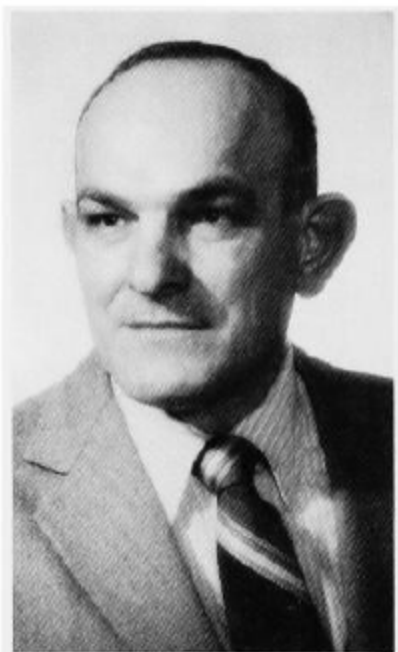
Born July 30, 1931, in Council Bluffs, son of Guy and Josephine (Pavelich) Pavich. Graduated from Thomas Jefferson High School, 1949. U.S. Army, 1952-54. Employee of Kellogg Company. Member of Grain Millers Local 50, Central-Labor Union and Southside Neighborhood Organization. Pottawattamie County Democratic chairman, 1966-74. Member: county Democratic committee; American Political Items Collectors; Pottawattamie and state historical societies. Catholic. Sixth term.





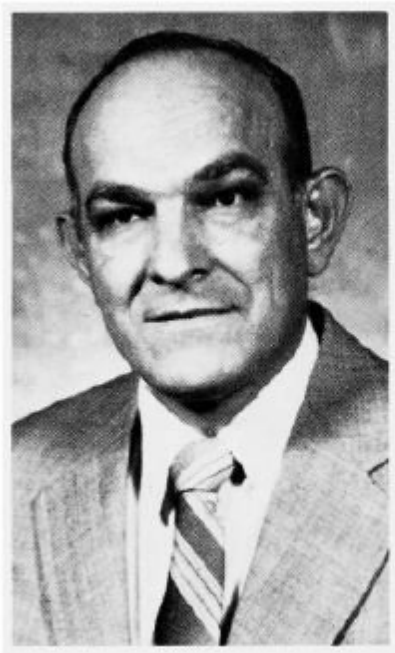
**PAVICH, Emil S. — Council Bluffs
District 100
Democrat**

Born July 30, 1931, in Council Bluffs, son of Guy and Josephine (Pavelich) Pavich. Graduated from Thomas Jefferson High School, 1949. U.S. Army, 1952-54. Employee of Kellogg Company. Member of Grain Millers Local 50, Central-Labor Union and Southside Neighborhood Organization. Pottawattamie County Democratic chairman, 1966-74. Member: county Democratic committee; American Political Items Collectors; Pottawattamie and state historical societies. Catholic. Fifth term.



**PAVICH, Emil S. — Council Bluffs
District 99
Democrat**

Born July 30, 1931, in Council Bluffs, son of Guy and Josephine (Pavelich) Pavich. Graduated from Thomas Jefferson High School, 1949. U. S. Army, 1952-54. Employee of Kellogg Company. Member of Grain Millers Local-50, Central-Labor Union and Southside Neighborhood Organization. Pottawattamie County Democratic chairman, 1966-74. Member: County Democratic Committee; and American Political, Items Collectors; Pottawattamie County and State Historical Societies. Catholic. Fourth term.

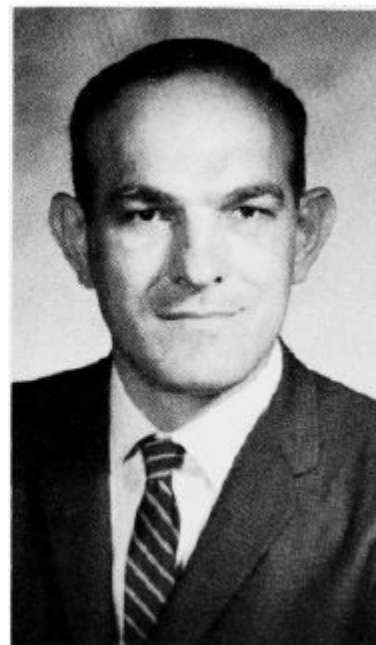


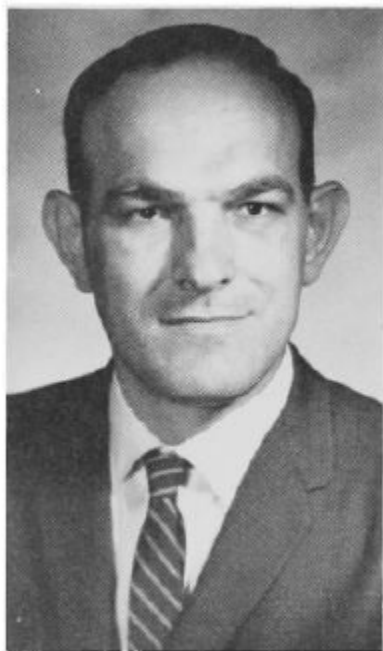
**PAVICH, Emil S., Council Bluffs
District 99
Democrat**

Born July 30, 1931 in Council Bluffs. Son of Guy and Josephine (Pavelich) Pavich. Graduated from Thomas Jefferson High School 1949. U.S. Army, 1952-1954. Employee of Kellogg Company. Member of Grain Millers Local-50, Central-Labor Union, Southside Neighborhood Organization, Pottawattamie County Democratic Chairman 1966-1974. Member of County Democratic Committee. American Political, Items Collectors, Pottawattamie County and State Historical Societies. Catholic. Third term.

PAVICH, Emil S., Council Bluffs
District 99
Democrat

Born July 30, 1931 in Council Bluffs. Son of Guy and Josephine (Pavelich) Pavich. Graduated from Thomas Jefferson High School 1949. U.S. Army, 1952-1954. Employee of Kellogg Company. Member of Grain Millers Local-50, Central-Labor Union, Southside Neighborhood Organization, Pottawattamie County Democratic Chairman 1966-1974. Member of County Democratic Committee. American Political, Items Collectors, Pottawattamie County and State Historical Societies. Catholic. Second term.





PAYICH, Emil S., Council Bluffs
District 99
Democrat

Born July 30, 1931 in Council Bluffs. Son of Guy and Josephine (Pavelich) Pavich. Graduated from Thomas Jefferson High School 1949. U.S. Army, 1952-1954. Employee of Kellogg Company. Member of Grain Millers Local-50, Delegate Southwest Iowa Labor Council, Pottawattamie County Democratic Chairman 1966-1974, Member of Pottawattamie County Democratic Committee. American Political, Items Collectors, Pottawattamie County and State Historical Societies. Catholic. First term.