



**HUSAK, Emil J. - Toledo**  
**District 30**  
Democrat

**Birth:** September 18, 1930, Toledo. **Parents:** The late William and Mary Husak. **Education:** Tama County schools. **Military service:** U.S. Army during Korean conflict, 1952-1954. **Spouse:** Dorothy Uhlenberg, 1955. **Children:** 2 daughters: Janice and Laurie; 2 sons: Michael and Dennis. **Grandchildren:** 9. **Profession and Activities:** Livestock and grain farmer. Member: Farm Bureau, Farmers Union, American Legion, 40-8, K.D. Lodge, Eagles, Kiwanis, St. Patrick's Catholic Church. Assistant majority leader. Served 5 terms in Iowa House. **Term:** Fourth.



**HUSAK, Emil J. - Toledo**  
**District 30**  
Democrat

**Birth:** September 18, 1930, Toledo. **Parents:** The late William and Mary Husak. **Education:** Tama County schools. **Military service:** U.S. Army during Korean conflict, 1952-1954. **Spouse:** Dorothy Uhlenberg, 1955. **Children:** 2 daughters: Janice and Laurie; 2 sons: Michael and Dennis. **Grandchildren:** 7. **Activities:** Livestock and grain farmer. Member: Farm Bureau, Farmers Union, American Legion, 40-8, K.D. Lodge, Eagles, Kiwanis, St. Patrick's Catholic Church. Assistant majority leader. Chair: Agriculture & Natural Resources Appropriation Subcommittee. Vice chair: Ways & Means Committee. Member: Agriculture, Appropriations, Rules & Administration, Ethics. Served 5 terms in Iowa House. **Term:** Fourth.



**HUSAK, Emil J. - Toledo**  
**District 38**  
Democrat

**Birth:** September 18, 1930, Toledo. **Parents:** The late William and Mary Husak. **Education:** Tama County schools. **Military service:** U.S. Army during Korean conflict, 1952-1954. **Spouse:** Dorothy Uhlenberg, 1955. **Children:** 2 daughters: Janice and Laurie; 2 sons: Michael and Dennis. **Activities:** Livestock and grain farmer. Member: American Legion, 40-8, K.D. Lodge, Eagles, Kiwanis, St. Patrick's Catholic Church. Served 5 terms in Iowa House. **Term:** Third.

**HUSAK, Emil J. — Toledo**  
**District 38**  
**Democrat**

**Birth:** September 18, 1930, Toledo. **Parents:** The late William and Mary Husak. **Education:** Tama County schools. **Military service:** U.S. Army during Korean conflict, 1952-1954. **Spouse:** Dorothy Uhlenberg, 1955. **Children:** 2 daughters: Janice and Laurie; 2 sons: Michael and Dennis. **Activities:** Livestock and grain farmer. Member: American Legion, 40-8, K.D. Lodge, Eagles, Kiwanis, St. Patrick's Catholic Church. Served 5 terms in Iowa House. **Term:** Third.



**HUSAK, Emil J. — Toledo**  
**38th Senatorial District**  
Democrat

Born Sept. 18, 1930, in Toledo, son of the late William and Mary Husak. Educated in Tama County schools. Married Dorothy Uhlenberg, 1955. Children: Michael, Dennis, Janice, Laurie. Livestock and grain farmer. Served in U.S. Army during Korean conflict, 1952-54. Member of American Legion, 40-8, K.D. Lodge, Eagles, Kiwanis, St. Patrick's Catholic Church. Served five terms in the House. Second term in the Senate.



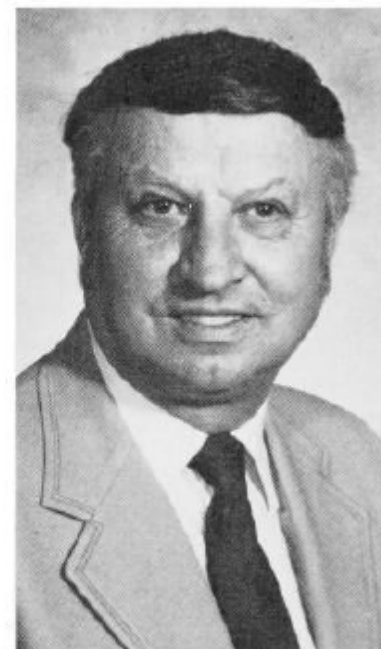


**HUSAK, Emil J. — Toledo**  
**38th Senatorial District**  
Democrat

Born Sept. 18, 1930, in Toledo, son of Mary and the late William Husak. Educated in Tama County schools. Married Dorothy Uhlenberg, 1955. Children: Michael, Dennis, Janice, Laurie. Livestock and grain farmer. Served in U.S. Army during Korean Conflict, 1952-54. Member of American Legion, 40-8, K.D. Lodge, Eagles, Kiwanis, St. Patrick's Catholic Church. Served five terms in the House. Second term in the Senate.

**HUSAK, Emil J. — Toledo**  
**38th Senatorial District**  
Democrat

Born Sept. 18, 1930, in Toledo, son of Mary and the late William Husak. Educated in Tama County schools. Married Dorothy Uhlenberg, 1955. Children: Michael, Dennis, Janice, Laurie. Livestock and grain farmer. Served in U.S. Army during Korean Conflict, 1952-54. Member of American Legion, 40-8, K.D. Lodge, Eagles, Kiwanis, St. Patrick's Catholic Church. Presently serving as chair of Small Business and Economic Development Committee, chair of Human Resources - Budget Subcommittee, vice chair of Ways and Means, also serving on Appropriations and Agriculture. Served five terms in the House. First term in the Senate.



**HUSAK, Emil J. — Toledo**  
**36th Senatorial District**  
Democrat

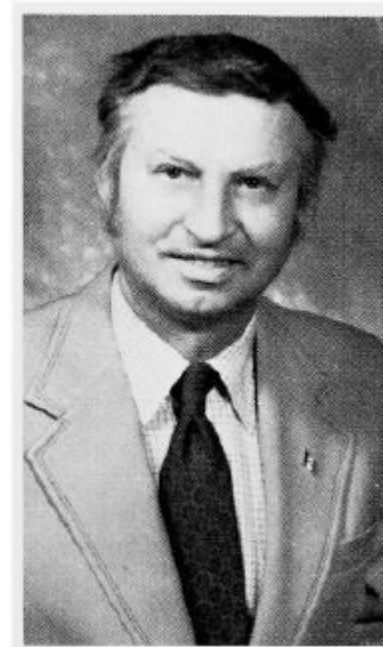
Born Sept. 18, 1930, in Toledo, son of Mary and the late William Husak. Educated in Tama County schools. Married Dorothy Uhlenberg, 1955. Children: Michael, Dennis, Janice, Laurie. Livestock and grain farmer. Served in U.S. Army during Korean Conflict, 1952-54. Former president, Tama County Democratic Club. Past American Legion, 3rd District, county and post adjutant. County vice commander and local post commander. Member of Tama County Democrat Club, Eagles, Kiwanis, American Legion, 40-8, K.D. Lodge, St. Patrick's Catholic Church. Presently serving as ranking member of Human Resources Budget subcommittee. Served five terms in the House. First term in the Senate.





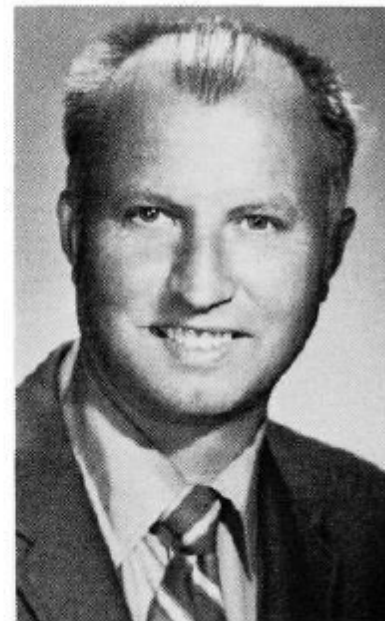
**HUSAK, Emil J., Toledo**  
**District 71**  
**Democrat**

Born Sept. 18, 1930, in Toledo, son of William and Mary Husak. Educated in Tama County Schools. Married Dorothy Uhlenberg, 1955. Children: Michael, Dennis, Janice, Laurie. Livestock and grain farmer. United States Army during Korean conflict 1952-1954. Former president Tama County Democrat Club. Past American Legion 3rd district, county and post adjutant. County vice commander and local post commander. Member of Tama County Democratic Club, Eagles, Kiwanis, American Legion, 40-8, K.D. Lodge, St. Patrick's Catholic Church. Presently serving as Ranking Member of Human Resources Budget Subcommittee. Fifth term.



**HUSAK, Emil J., Toledo**  
**District 71**  
**Democrat**

Born Sept. 18, 1930, in Toledo, son of William and Mary Husak. Educated in Tama County Schools. Married Dorothy Uhlenberg, 1955. Children: Michael, Dennis, Janice, Laurie. Livestock and grain farmer. United States Army during Korean conflict 1952-1954. Former president Tama County Democrat Club. Past American Legion 3rd district, county and post adjutant. County vice commander, and local post commander. Member of Tama County Democratic Club, Eagles, Kiwanis, American Legion, 40-8, K.D. Lodge, St. Patrick's Catholic Church. Presently serving as chairman of Human Resources Budget Subcommittee. Fourth term.





**HUSAK, Emil J., Toledo**

**District 71**

Democrat

Born Sept. 18, 1930, in Toledo, Iowa, son of William and Mary Husak. Educated in Tama County Schools. Married Dorothy Uhlenberg Aug. 16, 1955. Children: Michael, Dennis, Janice, Laurie. Livestock and grain farmer. United States Army during Korean conflict 1952-1954. Former president Tama County Democrat Club. Past American Legion 3rd district, county and post adjutant. County vice commander, and local post commander. Member of Tama County Democratic Club, Eagles, Kiwanis, American Legion, 40-8, K.D. Lodge, St. Patrick's Catholic Church. Presently serving as chairman of agriculture. Third term.

**HUSAK, Emil J., Toledo**  
**District 71**  
**Democrat**

Born in Toledo, Iowa, Sept. 18, 1930, son of William and Mary Husak. Attended Tama County Schools. Married Dorothy Uhlenberg Aug. 16, 1955. Four Children: Michael, Dennis, Janice and Laurie. Livestock, grain farmer, and school bus driver. United States Army during Korean conflict 1952-1954. Former president Tama County Democrat Club. Member Tama County Democrat Central Committee. Served on township A.S.C.S. committee; on Adult School Council. Past American Legion 3rd district, county and post adjutant; county vice commender, local post commander. Served as secretary county Farmers Union, vice president Holy Name Society, K-D Lodge, Tama County Democrat Club, Eagles, St. Patrick's Catholic Church. Second term.





**HUSAK, Emil J., Toledo**  
**Tama-Black Hawk Counties**  
**Democrat**

Born in Toledo, Sept. 18, 1930. Attended Tama County Schools. Married Dorothy Uhlenberg Aug. 16, 1955. Four children: Michael, Dennis, Janice and Laurie. Livestock and grain farmer and school bus driver. United States Army during Korean conflict 1952-1954. Former president County Democrat Club. Member County Democrat Central Committee. Served on township A.S.C.S. Committee; on Adult School Council. Past American Legion 3rd District, County and Post adjutant; County Vice Commander, Local Post Commander. Served as Secretary County Farmers Union, Vice President Holy Name Society. Member American Legion, 40-8, Farmers Union, Holy Name Society, K-D Lodge, Tama County Democrat Club, Eagles, St. Patrick's Catholic Church. First term.