



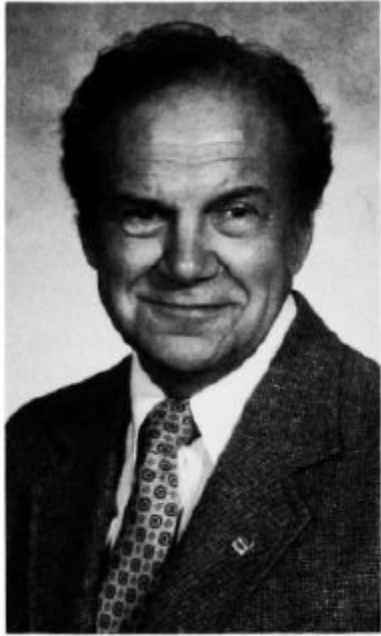
HERMANN, Donald F. - Bettendorf
District 40
Republican

Birth: July 19, 1921, Chicago, Illinois. **Education:** Graduate in journalism, University of Illinois. **Military service:** World War II veteran. **Spouse:** Alida Wolff, 1948. **Children:** 2 daughters: Carole Chambers and Holly Boesch; 1 son, Mark. **Activities:** Member: Lutheran Church, AMVETS, Lions International, and Bettendorf Chamber of Commerce. **Term:** Fourth.

**HERMANN, Donald F. — Bettendorf
District 40
Republican**

Born in Chicago, July 19, 1921, son of Emil and Minnie Hermann. Graduate in journalism, University of Illinois, 1948. Married Alida Wolff, 1948. W.W.II veteran. Three married children: Mark, Carole Chambers, Holly Boesch. Member, Lutheran Church, AMVETS, Lions International, Bettendorf Chamber of Commerce. Third term.





**HERMANN, Donald F. — Bettendorf
District 40
Republican**

Born in Chicago, July 19, 1921, son of Emil and Minnie Hermann. Graduate of Kelly High School, Chicago, 1939, and B.S., University of Illinois, 1948. Married Alida Wolff, 1948. W.W.II veteran. Three children: Mark, Carole, Holly. Member, Lutheran Church of America. Member of Lions International, Elks, AMVETS. Bettendorf Chamber of Commerce. Second term.

HERMANN, Donald F. — Bettendorf
District 40
Republican

Born in Chicago, July 19, 1921, son of Emil and Minnie Hermann. Graduate of Kelly High School, Chicago, 1939, and B.S., University of Illinois, 1948. Married Alida Wolff, 1948. W.W.II veteran. Three children: Mark, Carole, Holly. Member, Lutheran Church of America. Member of Lions International, Elks, AMVETS. First term.

