

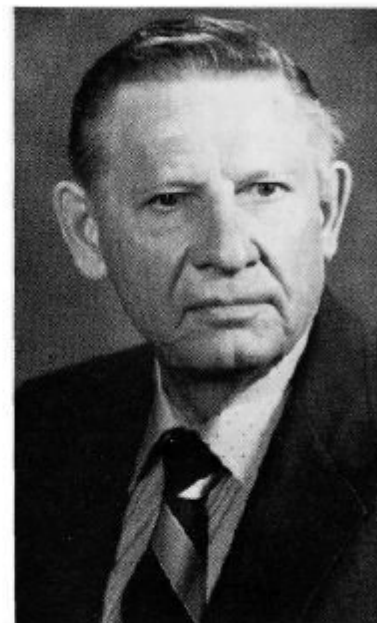


HANSEN, Ingwer L. — Hartley
District 3
Republican

Born Aug. 8, 1912, in Hartley. Graduated Hartley High School, 1930. Retired from U. S. Postal Service, 1972. Secretary, Hartley Chamber of Commerce, 1940-72. Married Patricia Greenlee, 1939. One son, two daughters. Served in Army, World War II. Past post and district commander, American Legion. Served as president and director of Hartley Community Memorial Hospital, 1958-76. Served 11 years as president of O'Brien County Board of Education. Director of Handicap Village, Sheldon. Member: United Church of Christ, American Legion, Masonic Orders, Order of the Eastern Star, Shrine, Farm Bureau and IRLCA. Assistant majority floor leader. Fifth term.

HANSEN, Ingwer L., Hartley
District 3
Republican

Born Aug. 8, 1912 in Hartley. Graduated Hartley High School, 1930. Retired from U.S. Postal Service 1972. Secretary Hartley Chamber of Commerce 1940-1972. Married Patricia Greenlee, 1939. One son, two daughters. Served in Army, World War II. Past Post and District Commander American Legion. Served as President and Director of Hartley Community Memorial Hospital 1958-1976. Served 11 years as president of O'Brien County Board of Education. Director of Handicap Village Sheldon. Member: Commission on Aging, United Church of Christ, American Legion, Masonic Orders, Order of the Eastern Star, Shrine, Farm Bureau, IRLCA. Assistant Majority Floor Leader. Fourth term.



HANSEN, Ingwer L., Hartley
District 3
Republican

Born Aug. 8, 1912 in Hartley. Graduated Hartley High School, 1930. Retired from U.S. Postal Service 1972. Secretary Hartley Chamber of Commerce 1940-1972. Married Patricia Greenlee, 1939. One son, two daughters. Served in Army, World War II, Past Post and District Commander American Legion. Served as President and Director of Hartley Community Memorial Hospital 1958-1976. Served 11 years as president of O'Brien County Board of Education. Former member of Veterans Affairs Commission in O'Brien County. Director of Handicap Village Sheldon. Member: Commission on Aging, United Church of Christ, American Legion, Masonic Orders, Order of the Eastern Star, Shrine, Farm Bureau, IRLCA. Third term.



HANSEN, Ingwer L., Hartley
District 3
Republican

Born Aug. 8, 1912, in Hartley, Iowa, son of Ernest and Augusta Hansen. Graduated Hartley High School 1930. Attended Des Moines College of Law. Retired from U.S. Postal Service 1972. Secretary Hartley Chamber of Commerce 1940-1972. Real estate broker and securities salesman. Married Patricia Greenlee, St. Croix Falls, Wis., 1939. One son, two daughters. Served in army, World War II. Past Post and District Commander American Legion. President and director of Community Memorial Hospital 1958-1973. Served 11 years as president O'Brien County Board of Education. Chairman Veterans Affairs Commission in O'Brien County. Member United Church of Christ, Masonic Orders, O.E.S. Shrine, Farm Bureau, IRLCA, and Iowa Chamber of Commerce Executives. Second term.





HANSEN, Ingwer L., Hartley
District 3
Republican

Born in Hartley, Iowa, Aug. 8, 1912, son of Ernest and Augusta Hansen. Graduated Hartley High School 1930. Attended Des Moines College of Law. Retired from U. S. Postal Service 1972. Secretary Hartley Chamber of Commerce 1940-1972. Real estate broker and securities salesman. Married Patricia Greenlee of St. Croix Falls, Wis. 1939. One son and two daughters. Served in army in World War II. Past Post and District Commander American Legion. President and director of Community Memorial Hospital 1958-1973. Served 11 years as president of O'Brien County Board of Education. Chairman Veterans Affairs Commission in O'Brien County. Member United Church of Christ, Masonic Orders, O.E.S., Shrine, Farm Bureau, IRLCA, and Iowa Chamber of Commerce Executives. First term in Iowa House.