



**GOODWIN, Norman J. - DeWitt**  
**District 19**  
**Republican**

**Birth:** January 5, 1913, Austin, Minnesota. **Parents:** Nels and Nellie Goodwin. **Education:** Graduated from Austin High School, 1931; B.S., University of Minnesota, 1936; M.S., University of Minnesota, 1945. **Spouse:** Marion Blomgren, 1936. **Children:** 2 daughters: Nanette and Julie; 1 son, David. **Activities:** Clinton County extension director, 1951-1978. Distinguished Service Award, 1960. Bereford-Quaife Award, 1967. Iowa Cattleman's Award, 1969. Honorary Master Pork Producer, 1971. Liberty Bell Award, 1975. R.K. Bliss Extension Award, 1976. **President:** Iowa Association of County Extension Directors (1965), National Association of County Agricultural Agents (1975). **Member:** United Methodist Church, People to People International, DeWitt Chamber of Commerce, Lions, Masonic Lodge, Clinton County Farm Bureau, Cattleman's and Pork Producers Association. **Term:** Third.



**GOODWIN, Norman J. — DeWitt**  
**19th Senatorial District**  
**Republican**

Born in Austin, Minn., on Jan. 5, 1913, son of Nels and Nellie Goodwin. Graduated from Austin High School, 1931. B.S., University of Minnesota, 1936. M.S., University of Minnesota, 1945. Clinton County extension director, 1951-78. Married Marion Blomgren, 1936. One son, David and two daughters, Nanette and Julie. Distinguished Service Award, 1960; president of the Iowa Association of County Extension Directors, 1965; Bereford-Quaife Award, 1967; Iowa Cattleman's Award, 1969; Honorary Master Pork Producer, 1971; Liberty Bell Award, 1975; president of the National Association of Agricultural Agents, 1975; President, National County Agricultural Agents, 1975. The R.K. Bliss Extension Award, 1976. United Methodist Church, People to People International, DeWitt Chamber of Commerce, Lions, Masonic Lodge, Clinton County Farm Bureau, Cattleman's and Pork Producers Association. Third term.

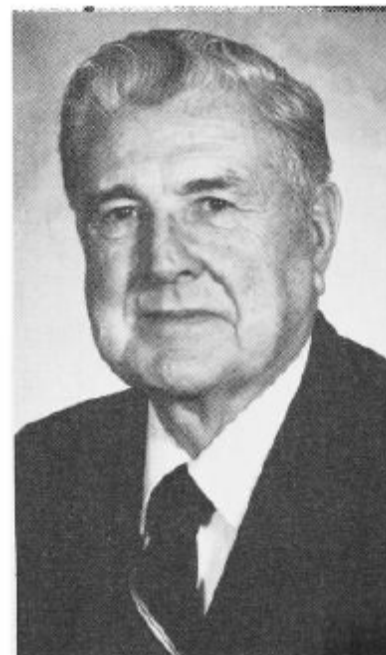


**GOODWIN, Norman J. — DeWitt**  
**19th Senatorial District**  
**Republican**

Born in Austin, Minn., on Jan. 5, 1913, son of Nels and Nellie Goodwin. Graduated from Austin High School, 1931. B.S., University of Minnesota, 1936. M.S., University of Minnesota, 1945. Clinton County extension director, 1951-78. Married Marion Blomgren, 1936. One son, David and two daughters, Nanette and Julie. Distinguished Service Award, 1960; president of the Iowa Association of County Extension Directors, 1965; Bereford-Quaife Award, 1967; Iowa Cattleman's Award, 1969; Honorary Master Pork Producer, 1971; United Methodist Church, People to People International, DeWitt Chamber of Commerce, Lions, Masonic Lodge, Clinton County Farm Bureau, Cattleman's and Pork Producers Association. Second term.

**GOODWIN, Norman J. — DeWitt**  
**19th Senatorial District**  
Republican

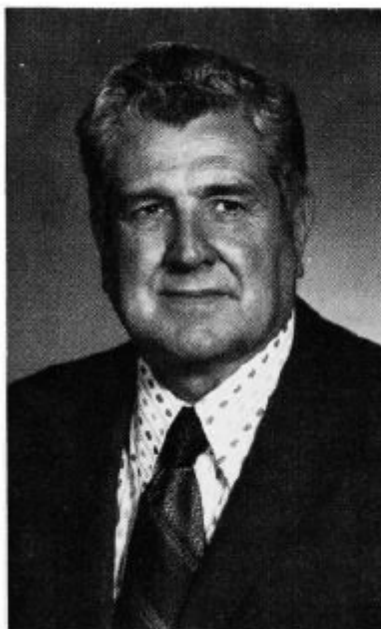
Born in Austin, Minn., on Jan. 5, 1913, son of Nels and Nellie Goodwin. Graduated from Austin High School, 1931. B.S., University of Minnesota, 1936. M.S., University of Minnesota, 1945. Clinton County extension director, 1951-78. Married Marion Blomgren, 1936. One son and two daughters. Distinguished Service Award, 1960; president of the Iowa Association of County Extension Directors, 1965; Bereford-Quaife Award, 1967; Iowa Cattleman's Award, 1969; Honorary Master Pork Producer, 1971; Liberty Bell Award, 1975; president of the National Association of Agricultural Agents, 1975; R. K. Bliss Extension Citation, 1976; Able Toastmaster, 1976. Member: United Methodist Church, People to People International, U.N. Association, Lions, Masonic Lodge, Clinton County Farm Bureau, Cattleman's and Pork Producers Association. Second term.



**GOODWIN, Norman J. — DeWitt**  
**39th Senatorial District**  
**Republican**

Born in Austin, Minn., on Jan. 5, 1913, son of Nels and Nellie Goodwin. Graduated from Austin High School, 1931. B.S., University of Minnesota, 1936. M.S., University of Minnesota, 1945. Clinton County extension director, 1951-78. Married Marion Blomgren, 1936. One son and two daughters. Distinguished Service Award, 1960; president of the Iowa Association of County Extension Directors, 1965; Bereford-Quaife Award, 1967; Iowa Cattleman's Award, 1969; Honorary Master Pork Producer, 1971; Liberty Bell Award, 1975; president of the National Association of Agricultural Agents, 1975; R. K. Bliss Extension Citation, 1976; Able Toastmaster, 1976. Member: United Methodist Church, People to People International, U.N. Association, Lions, Masonic Lodge, Clinton County Farm Bureau, Cattleman's and Pork Producers Association.





**GOODWIN, Norman J., DeWitt**  
**39th Senatorial District**  
**Republican**

Born in Austin, Minnesota Jan. 5, 1913, son of Nels and Nellie Goodwin. Attended LaBarr Grade School. Graduated from Austin High School 1931. B.S. University of Minnesota 1936. M.S. University of Minnesota 1945. Clinton County Extension Director 1951-June 1978. Married Marion Blomgren 1936. One son and two daughters. Distinguished Service Award 1960; President Iowa Association County Extension Directors 1965; Bereford-Quaife Award 1967; Iowa Cattlemen's Award 1969; Honorary Master Pork Producer 1971; Liberty Bell Award 1975; President National Association Agricultural Agents 1975; R. K. Bliss Extension Citation 1976; Able Toastmaster 1976. Member United Methodist Church, Lions, Masonic Lodge, Clinton County Farm Bureau, Cattlemen's and Pork Producers Association.