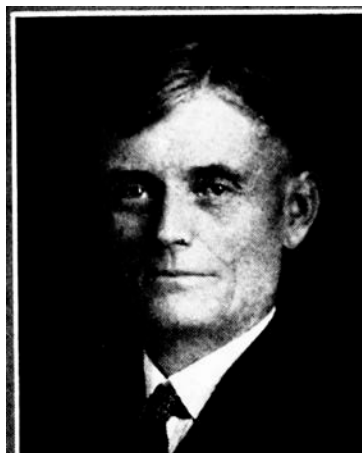


C. C. ANDERSON.—Representative from Montgomery county, was born in Sweden, June 8, 1873. Received his early education in the rural schools of that country. Came to the United States in 1890 and worked as a farm laborer in Mills county. Was naturalized and cast his first vote for president in 1896. In 1901 he bought a farm in Montgomery county, on which he is still residing. He was married to Miss Mary Jones, August 25, 1897. His wife lost her life in an automobile accident April 20, 1914. He has one son and four daughters. Served on township board eight years. Member of the M. E. church and Masonic lodge. Elected representative in 1924. Re-elected in 1926. Republican in politics.



C. C. ANDERSON.—Representative from Montgomery county, was born in Sweden June 8, 1873. Received his early education in the rural schools of that country. Came to the United States in 1890 and worked as a farm laborer in Mills county. Was naturalized and cast his first vote for president in 1896. In 1901 he bought a farm in Montgomery county on which he is still residing. He was married to Miss Mary Jones, August 25, 1897. His wife lost her life in an automobile accident April 20, 1914. He has one son and four daughters. Served on township board for eight years. Member of the M. E. church and Masonic lodge. Elected representative in 1924. Republican in politics.