

COLEMAN, C. Joseph - Clare
District 7
Democrat

Birthplace: Clare. **Education:** Attended St. Matthew's Academy, Iowa State University, and Bradley University. **Spouse:** Polly. **Children:** 3 sons. **Activities:** Farmer, bank director, and real estate broker. Member: Elks, Lions, Knights of Columbus, Terrace Hill Society, and the Catholic Church. Secretary of Pioneer Lawmakers. Former director of the American Soybean Association, National Corn Growers Association, the Iowa American Revolution Bicentennial Commission, and the Iowa Development Commission. Served as assistant minority leader, majority leader, and president pro tempore of the Iowa Senate. Chair, Transportation Committee. Vice-chair, Law Enforcement Subcommittee. Member: Human Resources, Judiciary, State Government, Legislative Council. 32 years in the Senate. **Term:** Ninth.



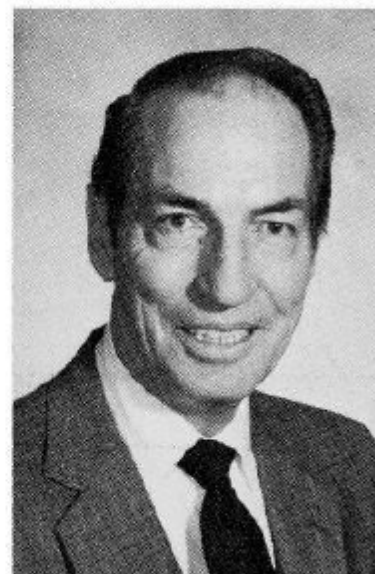
COLEMAN, C. Joseph - Clare
7th Senatorial District
Democrat

Born in Clare, and attended St. Matthew's Academy, Iowa State University and Bradley University. Farmer, bank director and real estate broker. Member of the Elks, Lions, Knights of Columbus, Terrace Hill Society and secretary of Pioneer Lawmakers. Former director of the American Soybean Association, National Corn Growers Association, the Iowa American Revolution Bicentennial Commission and Iowa Development Commission. Served as assistant minority leader, majority leader and president pro tempore of the Iowa Senate. Chair, Transportation Committee. Member: Human Resources; Judiciary; State Government; Law Enforcement Subcommittee; Legislative Council. Catholic. Wife, Polly; three sons. Ninth term. Thirty-first year in Senate.



COLEMAN, C. Joseph - Clare
7th Senatorial District
Democrat

Born in Clare, and attended St. Matthew's Academy, Iowa State University and Bradley University. Farmer, bank director and real estate broker. Member of the Elks, Lions, Knights of Columbus, Terrace Hill Society and secretary of Pioneer Lawmakers. Former director of the American Soybean Association, National Corn Growers Association, the Iowa American Revolution Bicentennial Commission and Iowa Development Commission. Served as assistant minority leader, majority leader and president pro tempore of the Iowa Senate. Chair, Transportation Committee. Member: Human Resources; Judiciary; State Government; Law Enforcement Subcommittee; Legislative Council. Catholic. Wife, Polly; three sons. Eighth term. Twenty-ninth year in Senate.



COLEMAN, C. Joseph - Clare
7th Senatorial District
Democrat

Born in Clare, and attended St. Matthew's Academy, Iowa State University and Bradley University. Farmer, bank director and real estate broker. Member of the Elks, Lions, Knights of Columbus, Terrace Hill Society and secretary of Pioneer Lawmakers. Former director of the American Soybean Association, National Corn Growers Association, the Iowa American Revolution Bicentennial Commission and Iowa Development Commission. Served as assistant minority leader, majority leader and president pro tempore of the Iowa Senate. Chair, Transportation Committee. Member: Human Resources; Judiciary; State Government; Law Enforcement Subcommittee; Legislative Council. Catholic. Wife, Polly; three sons. Twenty-seventh year in Senate.



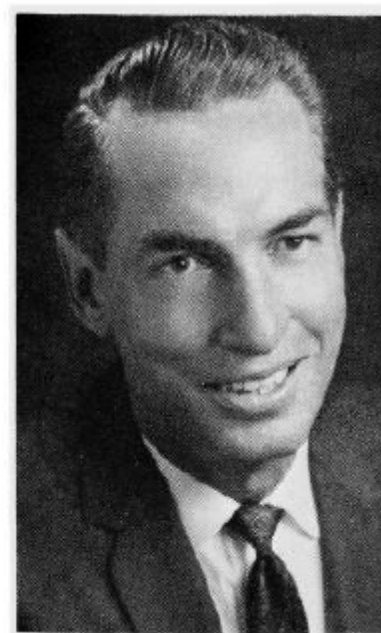
COLEMAN, C. Joseph - Clare
23rd Senatorial District
Democrat

Born in Clare, and attended St. Matthew's Academy, Iowa State University and Bradley University. Farmer, bank director and real estate broker. Member of the Elks, Lions, Knights of Columbus, Terrace Hill Society, and secretary of Pioneer Lawmakers. Former director of the American Soybean Association, National Corn Growers Association, the Iowa American Revolution Bicentennial Commission, and Iowa Development Commission. Served as assistant minority leader, majority leader and president pro tempore of the Iowa Senate. Chairman of the Appropriations and Transportation committees, Budget and Financial Control Committee, and Legislative Council. Catholic. Wife, Polly; three sons. Twenty-fourth year.



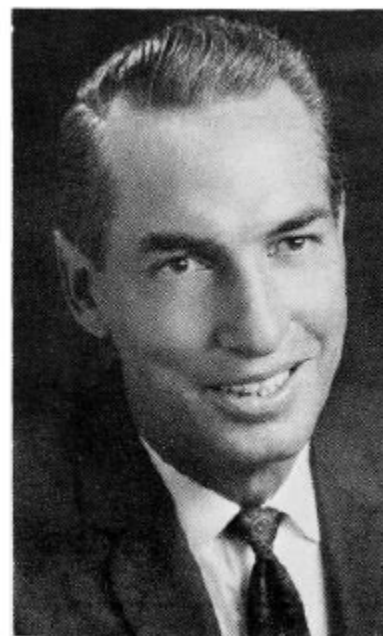
COLEMAN, C. Joseph, Clare
23rd Senatorial District
Democrat

Born in Clare and attended St. Matthew's Academy, Iowa State University and Bradley University. A bank director and real estate broker, and member of the Elks, Knights of Columbus, former director of the American Soybean Association, National Corn Growers Association, the Iowa American Revolution Bicentennial Commission and member of the Iowa Development Commission. Served as assistant minority leader, majority leader and President pro tempore of the Iowa Senate; also chairman of the Appropriations and Transportation Committees, Budget and Financial Control Committee and Legislative Council. Catholic. Wife, Polly; three sons. Twenty-third year.



COLEMAN, Joseph C., Clare
23rd Senatorial District
Democrat

Born March 14, 1923, in Clare. Attended St. Matthew's Academy, Iowa State University and Bradley University. A bank director, real estate broker, farmer and businessman, member of the Elks, Knights of Columbus, director of the American Soybean Association, National Corn Growers Association, and the Iowa American Revolution Bicentennial Commission. Served as assistant minority and majority leader, chairman of the Appropriations and Transportation Committees, Budget and Financial Control Committee and the Legislative Council. President pro tempore of the Senate, 67th General Assembly. Dean of Senate. Catholic. Wife, Polly; three sons. Sixth term.

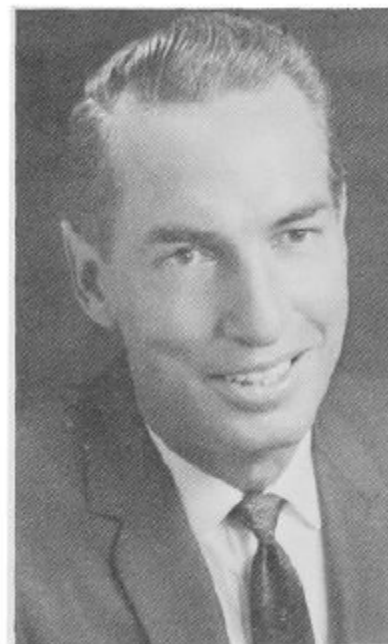


COLEMAN, C. Joseph, Clare

Democrat

23rd Senatorial District

Born March 14, 1923. Clare, Iowa, farmer and businessman. In Iowa Senate since 1957 and re-elected to fifth consecutive term 1972. Was 1965 and 1967 Senate Appropriations Committee chairman and Democratic assistant floor leader. Minority whip, 1971. Born on Webster County farm of pioneer family. Attended Iowa State and Bradley Universities. Former USDA technician. Director American Soybean Association. Bank director. Member Budget and Financial Control Committee eight years, and many civic, professional and social organizations. Married. Sons: Joe, Jr., Kevin, and Kerry.





COLEMAN, C. Joseph, Clare

Democrat

23rd Senatorial District

Born March 14, 1923. Clare, Iowa, farmer and businessman. In Iowa Senate since 1957 and re-elected to fifth consecutive term 1972. Was 1965 and 1967 Senate Appropriations Committee chairman and Democratic assistant floor leader, 1971 minority whip. Born on Webster County farm of pioneer family. Attended Iowa State and Bradley Universities. Former USDA technician. Director American Soybean Association. Bank director. Member Budget and Financial Control Committee eight years, and many civic, professional and social organizations. Married. Three sons: Joe, Jr., Kevin, and Kerry. Dean of Iowa Senate.



COLEMAN, C. Joseph, Clare
Democrat

**15th Senatorial District—Webster County,
Calhoun County; Lincoln, Greenfield,
Cedar, and Reading Townships**

Born March 14, 1923. Clare, Iowa, farmer and businessman. In Iowa Senate since 1957 and re-elected to fourth consecutive four-year term 1968. Was 1965 and 1967 Senate Appropriations Committee chairman and Democratic assistant floor leader. 1971 Minority Whip. Born on Webster County farm of pioneer family. Attended Iowa State and Bradley Universities. Former USDA technician. Director American Soybean Association and vice president of American Soybean Institute. Bank director. Member Budget and Financial Control Committee, Interim Tax Study Committee, and many civic, professional and social organizations. Married. Three sons: Joe, Jr., Kevin, and Kerry.

COLEMAN, C. Joseph, Clare
Democrat

35th Senatorial District—Webster County

Born March 14, 1923. Clare, Iowa, farmer and businessman. In the Iowa Senate since 1957 and re-elected to fourth consecutive four-year term in 1968. The 1965 and 1967 Senate appropriations committee chairman and Democratic assistant floor leader. Born on Webster County farm of pioneer family. Attended Iowa State and Bradley Universities. Former USDA technician. Director of American and Iowa Soybean Associations. Member of Iowa Development Commission, and many civic, professional and social organizations. Married, and has three sons; Joe, Jr., Kevin and Kerry.



COLEMAN, C. Joseph, Clare
Democrat

35th Senatorial District—Webster County

Born March 14, 1923, in Clare, Iowa, of a pioneer Webster County family. Attended St. Matthews Academy, Iowa State and Bradley Universities. Former Technician for U.S.D.A. Married Kay Burken of Des Moines in 1945. Two sons, Joe, Jr. and Kevin, from this marriage. Following decease of first wife, married Polly Pfanz in Cedar Rapids in 1954. One son, Kerry, from this marriage. Member of many civic, professional and social organizations. President of the Iowa Soybean Association, farms 480 acres and has other business interests. Member budget and financial control interim committee. Chairman senate appropriations committee, assistant majority leader. Elected to senate in 1956, 1960 and 1964.





COLEMAN, C. Joseph, Clare
Democrat

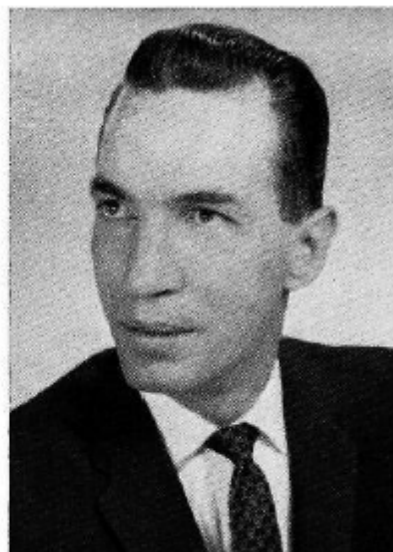
36th Senatorial District—Webster County

Born March 14, 1923, in Clare, Iowa, of a pioneer Webster County family. Attended St. Matthews Academy, Iowa State and Bradley Universities. Former technician for U.S.D.A. Married Kay Burken of Des Moines in 1945. Two sons, Joe Jr. and Kevin, from this marriage. Following decease of first wife, married Polly Pflanz in Cedar Rapids in 1954. One son, Kerry, from this marriage. Member of many civic, professional and social organizations. President of the Iowa Soybean Association, farms 480 acres and has other business interests. Member budget and financial control interim committee. Chairman senate appropriations committee, assistant majority leader. Elected to senate in 1956, 1960 and 1964.

COLEMAN, C. Joseph, Clare
Democrat

**17th (Old) Senatorial District—Webster
and (for the 60th G.A.) Humboldt Counties**

Born of a pioneer family on March 14, 1923, on a farm homesteaded by a great grandfather in Webster County. Attended St. Matthew's Academy, Clare, Iowa, Iowa State University, and Bradley University. Formerly a technician for the U.S.D.A. Married Katherine Burken, Des Moines, in 1945. Served as director of school boards, Fort Dodge Chambers of Commerce and farm organizations, member of Y.M.C.A., Izaak Walton, Knights of Columbus, vice-chairman of legislative research interim committee, chairman of dairy practices study committee. Married Polly Pfanz, Cedar Rapids, 1954. Three sons, Joe Jr., Kevin and Kerry. Farms 414 acres in Webster County. Produces seed corn for Garst and Thomas Hybrid Corn Co. Elected to senate in 1956 and 1960. Assistant senate minority floor leader.





COLEMAN, C. Joseph, Clare
Democrat
**27th Senatorial District—Calhoun and
Webster Counties**

Born of a pioneer family on March 14, 1923, on a farm homesteaded by a great grandfather in Webster County. Attended St. Matthew's Academy, Clare, Iowa, Iowa State University, and Bradley University. Formerly a technician for the U.S.D.A. Married Katherine Burken, Des Moines, in 1945. Director of local school board, member of Fort Dodge Chamber of Commerce, Y.M.C.A., Izaak Walton, Knights of Columbus, National Farmers Organization, National Farmers Union and Farm Bureau. Panellist for the 1955 National Farm Institute, named Webster County outstanding young farmer 1957. Married Polly Pfanz, Cedar Rapids, 1954. Three sons, Joe Jr., Kevin and Kerry. Farms 414 acres in Webster County. Produces seed corn for Garst and Thomas Hybrid Corn Co. Elected to Senate in 1956 and 1960.

COLEMAN, C. Joseph, Clare

Democrat

**27th Senatorial District-Calhoun and
Webster Counties**

Born of a pioneer family on March 14, 1923, on a farm homesteaded by a great grandfather in Webster County. Attended St. Matthew's Academy, Clare, Iowa, Iowa State College, and Bradley University. Formerly a technician for the U.S.D.A. Married Katherine Burken, Des Moines, in 1945. Director of local school board, Member of Fort Dodge Chamber of Commerce, Y.M.C.A., Izaak Walton, Knights of Columbus, N.F.O., National Farmers Union and Farm Bureau. Panelist for the 1955 National Farm Institute, named Webster County outstanding young farmer 1957. Married Polly Pfanz, Cedar Rapids, 1954. Three sons, Joe Jr., Kevin and Kerry. Farms 414 acres in Webster County. Produces seed corn for Garst and Thomas Hybrid Corn Co. Elected to Senate in 1956.



COLEMAN, C. Joseph, Clare
Democrat
**27th Senatorial District—Calhoun and
Webster Counties**

Born of a pioneer family on March 14, 1923, on a farm homesteaded by a great grandfather in Webster county. Attended St. Matthews academy, Clare, Iowa, Iowa State College, and Bradley University. Employed as a technician for the U.S.D.A. Married Katherine Burken, Des Moines in 1945. Director of local school board, Farm Bureau and a board member of the following: Fort Dodge Junior Chamber of Commerce, Izaak Walton, member of Knights of Columbus, N.F.O., National Farmers Union, panelist for the 1955 National Farm Institute, named Webster County outstanding young farmer 1957, active in Community Theater productions and Great Books discussion group. Married Polly Pflanz, Cedar Rapids, 1954. Three sons, Joey, Kevin and Kerry. Farms 414 acres in Webster county. Produces seed corn for Garst & Thomas.

