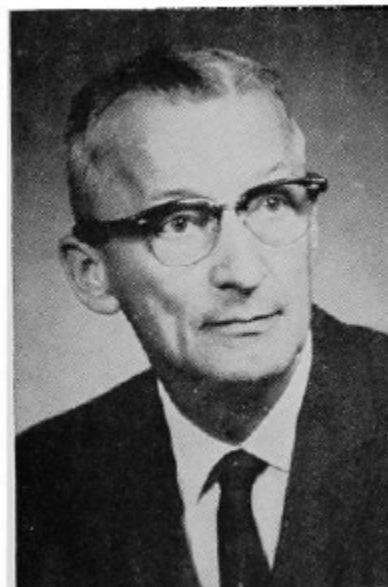


REDFERN, Carroll I., Donnellson
Lee County
Democrat ..

Born March 25, 1905, in New London, Iowa. Son of Ray and Hannah Broeker Redfern. Iowa State University, B.A. in Agronomy, 1927. Gamma Sigma Delta and Honorary Society. Member of Methodist Church, Lions, Fort Madison Chamber of Commerce, Accountants Association of Iowa, Farm Bureau. Self employed since 1940 as Real Estate Broker, hybrid seed corn district sales manager, accounting and tax service. Married Eves Fern Wasson, 1928, and they have two children: Nancy Carol (Mrs. R. L. Thuma) and Merlin Lee. Former member of the Donnellson town council; former president Iowa Fair Managers Association; member Lee County Fair Board. Elected to second term.



REDFERN, Carroll I., Donnellson
Lee County
Democrat

Born on a farm near New London, Iowa, March 25, 1905, the son of Ray and Hannah Broeker Redfern, and grew up on a farm near Yarmouth. Graduated from the Yarmouth High School, 1923, and from Iowa State University in 1929 with a B.A. degree in agronomy. Married Evea Fern Wasson, July 3, 1928; two children, Nancy, Mrs. R. L. Thuma, Mt. Pleasant, Iowa, and Merlin, Madison, Wis. Farm manager on a sugar cane and cotton plantation two years. County club agent, Lee County, 1930, and county agricultural agent, Madison and Lee Counties, 1931 to 1940. Land maintenance supervisor, Iowa Ordnance Plant, 2½ years; Hybrid Corn district sales supervisor 10 years; presently in real estate, accounting and tax service business. Member Lee County Fair Board and/or secretary 20 years, Lee County board of review since 1948. President Iowa Fair Managers Assn. one year and vice president one year. Member Methodist Church, Farm Bureau, Lions Club, Fort Madison Chamber of Commerce and Accountants Association of Iowa. Serving first term.

