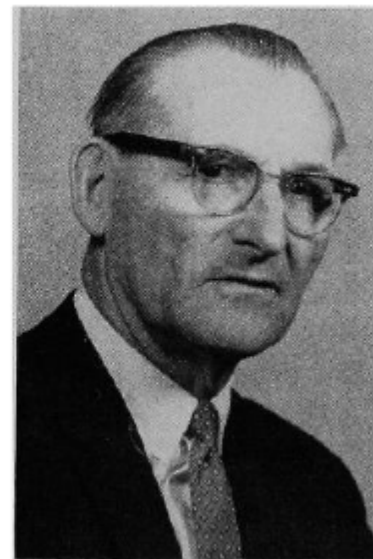


PATTON, James E., Manchester
Delaware County
Republican

Born in Ford County, Ill., July 16, 1895. Moved to Iowa with his parents in 1905. Educated in the public schools of Buchanan County and State College of Iowa, Cedar Falls. Served in 169th Machine Gun Battalion World War I. Married Gladys Utley, June 14, 1926. Three sons: James A., insurance broker in Chicago; William U., general agent for the American Mutual Insurance Co., Storm Lake; Roger D., minister, Olivet Presbyterian Church, Cedar Rapids. Owns 350-acre farm near Manchester, where he was engaged in turkey production, dairying and beef cattle. Retired January 1, 1959. Member of various Masonic orders, White Shrine, Eastern Star and El Kahir Temple. Has served in all elective offices of Delaware County Farm Bureau, member of American Legion, and Presbyterian Church. Served in 58th, 59th, 60th, 60th Extra, 61st and 62nd General Assemblies.

PATTON, James E., Manchester
Delaware County
Republican

Born in Ford County, Ill., July 16, 1895. Moved to Iowa with his parents in 1905. Educated in the public schools of Buchanan County and State College of Iowa, Cedar Falls. Served in 169th Machine Gun Battalion World War I. Married Gladys Utley, June 14, 1926. Three sons: James A., insurance broker in Chicago; William U., general agent for the American Mutual Insurance Co., Storm Lake; Roger D., minister, Olivet Presbyterian Church, Cedar Rapids. Owns 350-acre farm near Manchester, where he was engaged in turkey production, dairying and beef cattle. Retired January 1, 1959. Member of various Masonic orders, White Shrine, Eastern Star and El Kahir Temple. Has served in all elective offices of Delaware County Farm Bureau, member of American Legion, and Presbyterian Church. Served in 58th, 59th, 60th, 60th Extra and 61st General Assemblies.





PATTON, James E., Manchester
Delaware County
Republican

Born in Ford County, Ill., July 16, 1895. Moved to Iowa with his parents in 1905. Educated in the public schools of Buchanan County, completed his education at State Teachers College, Cedar Falls. Served in the 169th Machine Gun Battalion World War I. Married Gladys Utley June 14, 1926. They have three sons: James A., an insurance broker in Chicago; William U., district supervisor for Iowa Life Insurance Company, Redwood Falls, Minn.; Roger D., minister, Olivet Presbyterian Church, Cedar Rapids. Owns a 350-acre farm near Manchester, where he was engaged in turkey production, dairying and beef cattle. Retired Jan. 1, 1959. Member of various Masonic orders, White Shrine, Eastern Star and El Kahir Temple. Has served in all elective offices of Delaware County Farm Bureau, member of American Legion, and the Presbyterian Church. Serving third term.

PATTON, James E., Manchester
Delaware County
Republican

Born in Ford County, Ill., July 16, 1895. Moved to Iowa with his parents in 1905. Educated in the public schools of Buchanan County, completed his education at State Teachers College, Cedar Falls. Served in the 169th Machine Gun Battalion World War I. Married Gladys Utley June 14, 1926. They have three sons: James A., an insurance broker in Chicago; William U., general agent for Farm Bureau Mutual in Howard County; Roger D., Presbyterian minister in Oxford, N. J. Owns a 350-acre farm near Manchester, where he was engaged in turkey production, dairying and beef cattle. Retired Jan. 1, 1959. Member of various Masonic orders, White Shrine, Eastern Star and El Kahir Temple. Has served in all elective offices of Delaware County Farm Bureau, member of American Legion, and the Presbyterian Church. Serving second term.





PATTON, James E. Manchester
Delaware County
Republican

Born in Ford County, Illinois, July 16, 1895. He moved with his parents to Buchanan County, Iowa in 1905. Educated in the schools of Buchanan County, and completed his education at the State Teachers College at Cedar Falls, Iowa. Served as a Machine Gun Instructor in World War I. Married Gladys Utley on June 14, 1926. They have three sons, James A. with the Mutual of Omaha in Chicago; William U. an Extension Director in Butler County, Iowa; and Roger D. a senior in Princeton Theological Seminary, Princeton, New Jersey. He has lived near Manchester where he was engaged in turkey production, farming, dairying, and beef cattle. Owns 350 acres of land, two miles south of Manchester. Retired January 1, 1959. Member of various Masonic orders, including Shrine; also member of American Legion. Presbyterian, elder for several years. Serving first term.