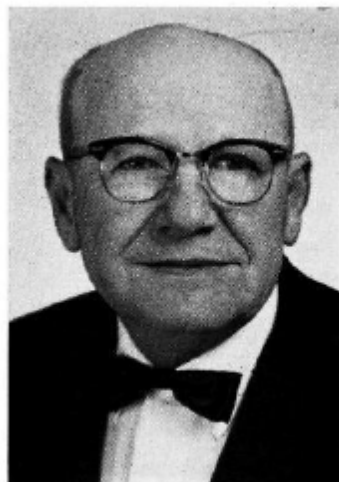


**MENSING, A. L., Lowden**

**Cedar County**

**Republican**

Born on a farm near Lowden, Iowa, Oct. 27, 1896, son of Diedrich and Louise Ernsting Mensing. Married Elsa Rodenbeck in 1919. Two sons, Wilmarth and Leon. Operated general mercantile business from 1915 until retirement Jan. 1, 1953. Vice president and director of American Trust and Savings Bank of Lowden. Mayor of Lowden 1920-1928. Postmaster 1928-1936. President of Lowden Community Club, 1925-1939. Chairman Red Cross branch 1929-1942. Republican county chairman 1942-1950. President of Cedar County Historical Society 1957-1959. World War I veteran. Protestant. Member American Legion. Serving eighth term.



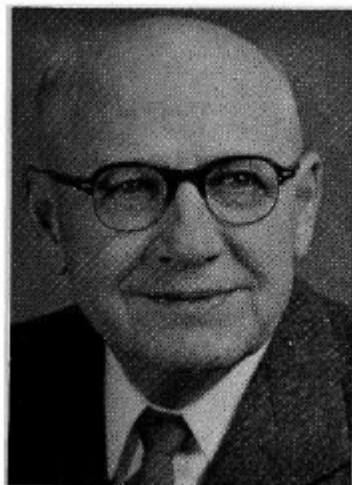
**MENSING, A. L., Lowden**  
**Cedar County**  
**Republican**

Born on a farm near Lowden, Iowa, Oct. 27, 1896, son of Diedrich and Louise Ernsting Mensing. Married Elsa Rodenbeck in 1919. Two sons, Wilmarth and Leon. Operated general mercantile business from 1915 until retirement Jan. 1, 1953. Vice president and director of American Trust and Savings Bank of Lowden. Mayor of Lowden 1920-1928. Postmaster 1928-1936. President of Lowden Community Club, 1925-1939. Chairman American Red Cross branch 1929-1942. Republican county chairman 1942-1950. President of Cedar County Historical Society 1957-1959. World War I veteran. Protestant. Member American Legion. Serving seventh term.



**MENSING, A. L., Lowden  
Cedar County  
Republican**

Born on a farm near Lowden, Iowa, Oct. 27, 1896. Son of Diedrich and Louise Ernsting Mensing. Married Elsa Rodenbeck in 1919. Two sons, Wilmarth and Leon. Operated general mercantile business from 1915 until retirement Jan. 1, 1953. Vice president and director of American Trust and Savings Bank of Lowden. Mayor of Lowden 1920-1928. Postmaster 1928-1936. President of Lowden Community Club, 1925-1939. Chairman American Red Cross branch 1929-1942. Republican county chairman 1942-1950. President Cedar County Historical Society 1957-1959. World War I veteran. Protestant. Member American Legion. Serving sixth term.



**MENSING, A. L., Lowden**  
**Cedar County**  
Republican

Born on a farm near Lowden, Iowa, on October 27, 1896. Son of Diedrich and Louise Ernsting Mensing. Married in 1919 to Elsa Rodenbeck. Two sons, Wilmarth and Leon. Entered general mercantile business in 1915 which he operated until retirement on January 1, 1953. Vice president and director of American Trust and Savings Bank of Lowden. Mayor of Lowden 1920-1928. Postmaster 1928-1936. President of Lowden Community Club, 1925-1939. Chairman American Red Cross branch 1929-1942. Republican county chairman 1942-1950. President Cedar County Historical Society 1957-1959. World War I veteran. Protestant. Member American Legion. Previous sessions, 54th, 55th, 56th and 57th. Serving fifth term.

**MENSING, A. L., Lowden Cedar County  
Republican**

Born on a farm near Lowden, Iowa, on October 27, 1896. Son of Diedrich and Louise Ernsting Mensing. Married in 1919 to Elsa Rodenbeck. Two sons, Wilmarth and Leon. Entered general mercantile business in 1915 which he operated until retirement on January 1, 1953. Vice president and director of American Trust and Savings Bank of Lowden. Mayor of Lowden 1920-1928. Postmaster 1928-1936. President of Lowden Community club, 1925-1939. Chairman American Red Cross branch 1929-1942. Republican county chairman 1942-1950. World War I veteran. Protestant. Member American Legion. Previous sessions, 54th, 55th and 56th. Serving fourth term.





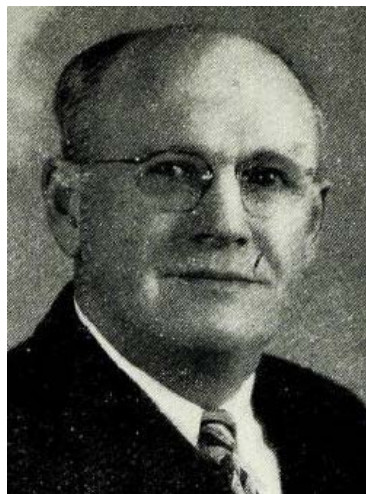
**MENSING, A. L., Lowden Cedar County**  
Republican

Born on a farm near Lowden, Iowa, on October 27, 1896. Son of Diedrich and Louise Ernsting Mensing. Married in 1919 to Elsa Rodenbeck. Two sons, Wilmarth and Leon. Entered general mercantile business in 1915 which he operated until retirement on January 1, 1953. Vice president and director of American Trust and Savings bank of Lowden. Mayor of Lowden 1920-1928. Postmaster 1928-1936. President of Lowden Community club, 1925-1939. Chairman American Red Cross branch 1929-1942. Republican county chairman 1942-1950. World War I veteran. Protestant. Member American Legion. Serving third term.



**MENSING, A. L., Lowden Cedar County**

Born on a farm near Lowden, Iowa, on October 27, 1896. Son of Diedrich and Louise Ernsting Mensing. Married in 1919 to Elsa Rodenbeck. Two sons, Wilmarth and Leon. Entered general mercantile business in 1915 which he operated until retirement on January 1, 1953. Vice president and director of American Trust and Savings Bank of Lowden. Mayor of Lowden 1920-1928. Postmaster 1928-1936. President of Lowden Community Club, 1925-1939. Chairman American Red Cross branch 1920-1942. Republican county chairman 1942-1950. World War I veteran. Protestant. Member American Legion. Serving second term.



**MENSING, A. L., Lowden Cedar County  
Republican**

Born on a farm near Lowden, Iowa, on October 27, 1896. Son of Diedrich and Louise Ernsting Mensing. Married in 1919 to Elsa Rodenbeck. Two sons, Wilmarth and Leon. Entered general mercantile business in 1915 and is owner and operator of such business today. Director of American Trust and Savings Bank of Lowden. Mayor of Lowden 1920-1928. Postmaster 1928-1936. President of Lowden Community Club, 1925-1939. Chairman American Red Cross branch 1920-1942. Republican county chairman 1942-1950. World War I veteran. Protestant. Member American Legion. Serving first term.