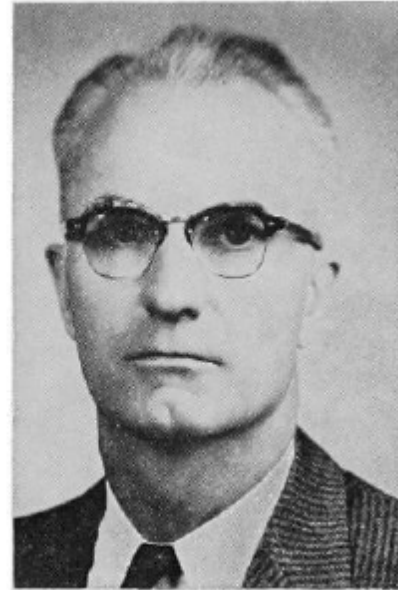


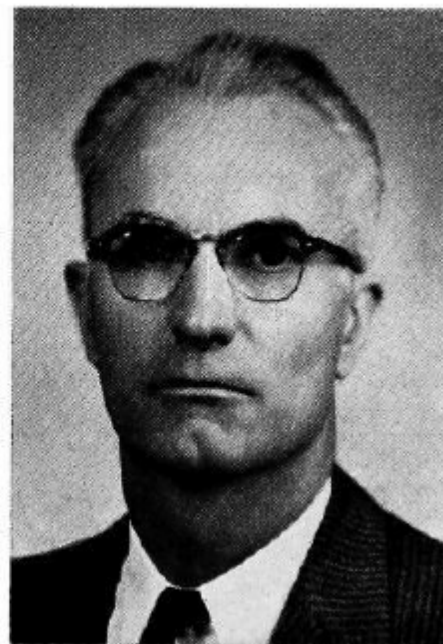
**GITTINS, Harry R., Council Bluffs
Pottawattamie County
Republican**

Born on a farm near Underwood, Pottawattamie County, August 10, 1910, on son of Ray and Eva Gittins. Earned Bachelor of Arts Degree from University of Nebraska, 1935; Master of Science Degree, University of Southern California, 1940. Married Ramona Peterson of Underwood in 1940. Their children are Harriet, Patricia, Robert, Rodney, and Roger. School superintendent, teacher, and coach for 17 years in Nebraska, California, and Iowa. First principal of Nellie N. Coffman School, Palm Springs, 1930-40. Past 13 years, Pottawattamie County Director of Institutional Affairs. Member of Kiwanis, Farm Bureau, Board of Directors of the County Mental Health Center. Farm owner and manager. Lutheran. Listed in Marquis Who's Who in the Midwest, 1967 editor. Serving third term.



**GITTINS, Harry R., Council Bluffs
Pottawattamie County
Republican**

Born on a farm near Underwood, Aug. 10, 1910, only son of Ray and Eva Gittins. Received bachelor's degree from University of Nebraska, 1935, and master of science degree from University of Southern California, 1940. School superintendent, teacher, and coach for 17 years. The last nine years, employed by Pottawattamie County in charge of Institutional Affairs. Married Ramona Peterson, R.N., of Underwood in 1940. Their children are Harriet, Patricia, Robert, Rodney, and Roger. Member of Lions Club and Farm Bureau; Protestant. Serving second term.





GITTINS, Harry R., Underwood
Pottawattamie County
Republican

Born on a farm near Underwood, Aug. 10, 1910, only son of Ray and Eva Gittins. Received bachelor's degree from University of Nebraska, 1935, and master of science degree from University of Southern California, 1940. School superintendent, teacher, and coach for 17 years. The last seven years, employed by Pottawattamie County in charge of Institutional Affairs. Married Ramona Peterson, R.N., of Underwood in 1940. Their children are Harriet, Patricia, Robert, Rodney, and Roger. Member of Lions Club and Farm Bureau. Protestant. Serving first term.