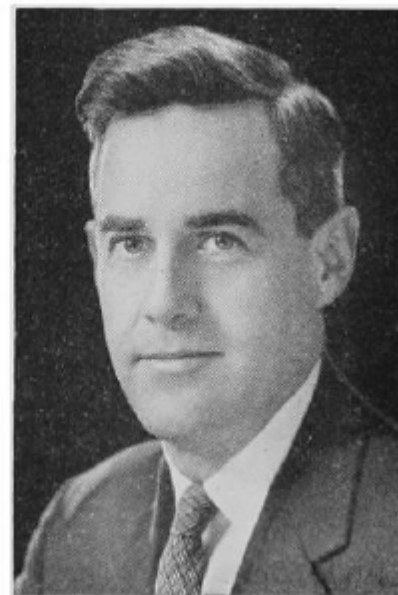
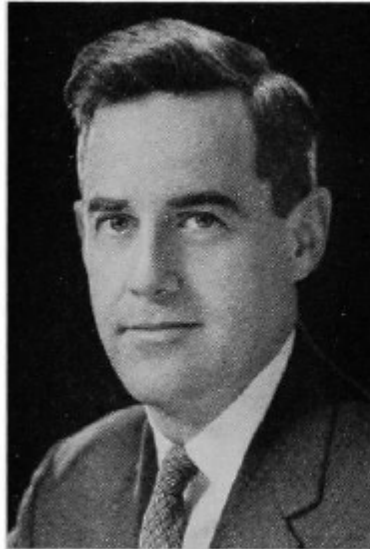


ELY, John M., Cedar Rapids
Democrat

24th Senatorial District—Linn County

Born in 1919 at Cedar Rapids, of pioneer stock who in 1844 settled on the site of what later was to become Cedar Rapids. Graduate of Princeton University, with major in the School of Public and International Affairs, 1941. Employed as ingredients buyer by the Quaker Oats Company. Married Polly Ward of Worcester, Mass., in 1942. Three children: John M. III, Martha M., and Nathaniel W. During World War II served in merchant marine as purser for the United Fruit Company. Board member of Cedar Rapids Visiting Nurse Association, also Linn County Mental Health Association. Unitarian. Served two terms in house; elected to senate in 1964.





**ELY, John M., Cedar Rapids
Democrat**

20th Senatorial District—Linn County

Born in 1919 at Cedar Rapids, of pioneer stock who in 1844 settled on the site of what later was to become Cedar Rapids. Graduate of Princeton University, with major in the School of Public and International Affairs, 1941. Employed as ingredients buyer by the Quaker Oats Company. Married Polly Ward of Worcester, Mass., in 1942. Three children: John M. III, Martha M., and Nathaniel W. During World War II served in merchant marine as purser for the United Fruit Company. Board member of Cedar Rapids Visiting Nurse Association, also Linn County Mental Health Association. Unitarian. Served two terms in house; elected to senate in 1964.

ELY, John M., Cedar Rapids
Linn County
Democrat

Born in 1919 at Cedar Rapids, of pioneer stock who in 1844 settled on the site of what later was to become Cedar Rapids. Graduate of Princeton University, with major in the School of Public and International Affairs, 1941. Employed as ingredients buyer by the Quaker Oats Company. Married Polly Ward of Worcester, Mass., in 1942. Three children: John M. III, Martha M., and Nathaniel W. During World War II served in merchant marine as purser for the United Fruit Company. President Cedar Rapids Council on World Questions, board member of Cedar Rapids Visiting Nurse Association. Also Linn County Mental Health Association. Unitarian. Serving second term.





ELY, John M., Jr., Cedar Rapids
Linn County
Democrat

Born in 1919 at Cedar Rapids, of pioneer stock who in 1844 settled on the site of what later was to become Cedar Rapids. Graduate of Princeton University, with major in the School of Public and International Affairs, 1941. Employed as Ingredients buyer by the Quaker Oats Company. Married Polly Ward of Worcester, Mass., in 1942. Three children, John M. III, Martha M., and Nathaniel W. During World War II served in merchant marine as purser for the United Fruit Company. President Cedar Rapids Council on World Questions, board member of Cedar Rapids Visiting Nurse Association, also Linn County Mental Health Association. Adult adviser Missouri Valley Federation of Liberal Religious Youth (Unitarian-Universalist). Serving first term.