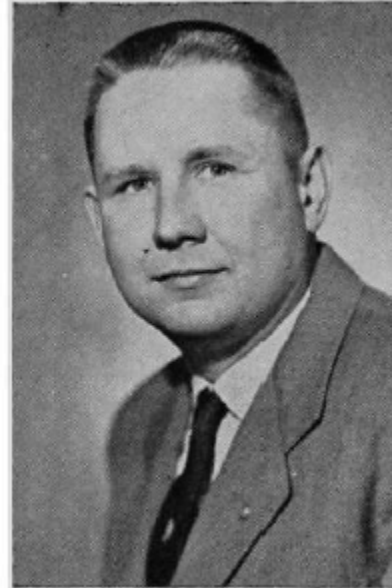


DISTELHORST, Milton, Burlington
Des Moines County
Democrat

Born June 24, 1921, in Des Moines County, the son of Ed and Annie Distelhorst. Attended schools in Des Moines County. Owner and operator of 320-acre farm in Jackson Township, Des Moines County. Married Phyllis McLaren in 1944; they have three children, Thomas, Christina, and David. A veteran of three years service in the Army Air Force during World War II. Served as township trustee seven years. Also was a member of Des Moines County Extension Council. Member of Des Moines County Board of supervisors the last six years (chairman five years). Former member of Iron Workers Local 577. Member of Trinity Lutheran Church, American Legion and Disabled American Veterans. Serving second term.



DISTELHORST, Milton, Burlington
Des Moines County
Democrat

Born June 24, 1921, in Des Moines County, the son of Ed and Annie Distelhorst. Attended schools in Des Moines County. Owner and operator of 320 acre farm in Jackson Township, Des Moines County. Married Phyllis McLaren in 1944; they have three children, Thomas 16, Christina 12, and David 5. A veteran of three years service in the Army Air Force during World War II. Served as township trustee seven years. Also was a member of Des Moines County Extension Council. Member of Des Moines County board of supervisors the last six years (chairman five years). Former member of Iron Workers Local 577. Member of Trinity Lutheran Church, American Legion and Disabled American Veterans. Serving first term.

