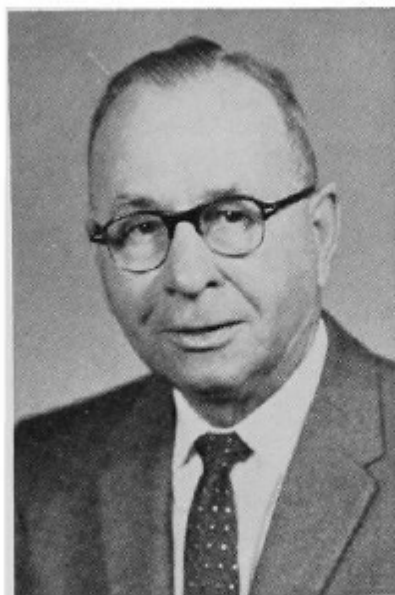


SANDERS, Leo L., Estherville
Emmet-Palo Alto Counties
Republican

Born in Osceola, Iowa, on March 16, 1894. Son of Luther T. and Adella Sanders. Moved to Des Moines in 1897. Educated in Des Moines. Married Sarah Davis on August 4, 1916; moved to Estherville, Iowa, in 1919. Has been in wholesale ice cream business most of adult life. Mayor of Estherville from 1956 to 1962. Presently associated with Estherville Daily News. Member of Estherville Christian Church; past member of church board and now on church property committee. Past member of board of Estherville Chamber of Commerce; past Exalted Ruler of Elks; past member of board and vice president of League of Iowa Municipalities. Four children: Robert, Jack, William and Patty Lee Thompson; 17 grandchildren; 2 great grandchildren. Serving second term in legislature.





SANDERS, Leo I., Estherville
Emmet-Palo Alto Counties
Republican

Born in Osceola, Iowa, on March 16, 1894. Son of Luther T. and Adella Sanders. Moved to Des Moines in 1897. Educated in Des Moines. Married Sarah Davis on August 4, 1916; moved to Estherville, Iowa, in 1919. Has been in wholesale ice cream business most of adult life. Mayor of Estherville from 1956 to 1962. Presently associated with Estherville Daily News. Member of Estherville Christian Church; past member of church board and now on church property committee. Past member of board of Estherville Chamber of Commerce; past Exalted Ruler of Elks; past member of board and vice president of League of Iowa Municipalities. Four children: Robert, Jack, William and Patty Lee Thompson; 17 grandchildren; 2 great grandchildren. Serving first term in legislature.