

O'MALLEY, George E., Des Moines
Democrat

20th Senatorial District—Polk County

Born in Dallas County on a farm Sept. 18, 1905. Attended Bouton grade school, Dowling High School, Des Moines, and graduated in 1923 from Perry High School. Graduated from Creighton University in 1930 with A.B. and LL.B. degrees. Actively farmed in Dallas County on farm which he now owns. Started practicing law in Des Moines in 1930. Married Grace Johnson of Omaha, Neb., 1933. Father of ten children: George, Jr., Bernard, Jean, John, Dennis, Richard, Brian, Kathleen, Michael and Joseph. Was acting city solicitor for Des Moines, 1936-1938. During war was chief enforcement attorney for Iowa Price Administration. Former state deputy Knights of Columbus, active in Boy Scout movement. Member Chamber of Commerce and Kiwanis Club. Former state co-chairman National Conference of Christians and Jews. Former president Iowa University School of Religion. State representative Polk county, 53rd General Assembly. Senate minority floor leader in 55th to 58th General Assemblies. Twelfth session in General Assembly, including 60th Extra G. A., President pro tem in 61st and 62nd G. A.



O'MALLEY, George E., Des Moines

Democrat

20th Senatorial District—Polk County

Born in Dallas County on a farm Sept. 18, 1905. Attended Bouton grade school, Dowling High School, Des Moines, and graduated in 1923 from Perry High School. Graduated from Creighton University in 1930 with A.B. and LL.B. degrees. Actively farmed in Dallas County on farm which he now owns. Started practicing law in Des Moines in 1930. Married Grace Johnson of Omaha, Neb., 1933. Father of ten children: George, Jr., Bernard, Jean, John, Dennis, Richard, Brian, Kathleen, Michael and Joseph. Was acting city solicitor for Des Moines, 1936-1938. During war was chief enforcement attorney for Iowa Price Administration. Former state deputy Knights of Columbus, active in Boy Scout movement. Member Chamber of Commerce and Kiwanis Club. State co-chairman National Conference of Christians and Jews. State representative Polk county, 53rd General Assembly. Senate minority floor leader in 55th to 58th General Assemblies. Eleventh session in General Assembly, including 60th Extra G. A., President pro tem in 61st and 62nd G. A.



O'MALLEY, George E., Des Moines
Democrat

27th Senatorial District—Polk County

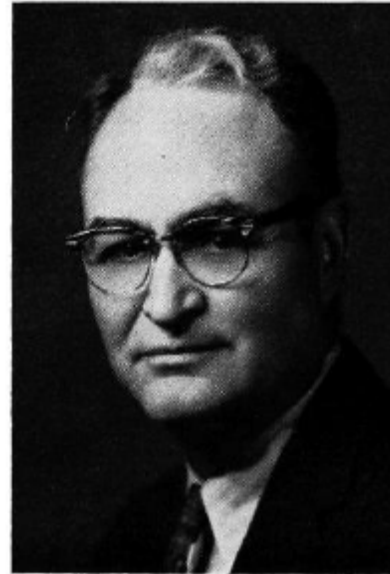
Born in Dallas County on a farm near Bouton, Iowa, Sept. 18, 1905. Attended Bouton grade school, Dowling High School Des Moines, and graduated in 1923 from Perry High School, Perry, Iowa. Graduated from Creighton University in 1930 with A.B. and LL.B. degrees. Prior to graduation, actively farmed in Dallas County on farm which he now owns. Started practicing law in Des Moines in 1930. Married Grace Johnson of Omaha, Neb., 1933. Father of ten children: George, Jr., Bernard, Jean, John, Dennis, Richard, Brian, Kathleen, Michael and Joseph. Was acting city solicitor for Des Moines, 1936-1938. During war was chief enforcement attorney for Iowa Price Administration. Former state deputy Knights of Columbus of Iowa, active in Boy Scout movement. Member Chamber of Commerce and Kiwanis Club. State co-chairman National Conference of Christians and Jews. State representative Polk county, 53rd General Assembly. Senate minority floor leader in 55th to 58th General Assemblies. Tenth session in General Assembly, including 60th Extra G. A. President pro tem in 61st G. A.



O'MALLEY, George E., Des Moines
Democrat

27th Senatorial District—Polk County

Born in Dallas County on a farm near Bouton, Iowa, Sept. 18, 1905. Attended Bouton grade school, Dowling High School Des Moines, and graduated in 1923 from Perry High School, Perry, Iowa. Graduated from Creighton University in 1930 with A.B. and LL.B. degrees. Prior to graduation, actively farmed in Dallas County on farm which he now owns. Started practicing law in Des Moines in 1930. Married Grace Johnson of Omaha, Neb., 1933. Father of ten children (George, Jr., Bernard, Jean, John, Dennis, Richard, Brian, Kathleen, Michael and Joseph). Was acting city solicitor for Des Moines, 1936-1938. During war was chief enforcement attorney for Iowa Price Administration. Former state deputy Knights of Columbus of Iowa, active in Boy Scout movement. Member Chamber of Commerce and Kiwanis Club. State co-chairman National Conference of Christians and Jews. State representative Polk county, 53rd General Assembly. Senate minority floor leader in 55th to 58th General Assemblies. Eighth session in general assembly.



O'MALLEY, George E., Des Moines
Democrat

30th Senatorial District—Polk County

Born in Dallas County on a farm near Bouton, Iowa, Sept. 18, 1905. Attended Bouton grade school, Dowling high school, Des Moines, and graduated in 1923 from Perry high school, Perry, Iowa. Graduated from Creighton University in 1930 with A.B. and LL.B. degrees. Prior to graduation, actively farmed in Dallas county on farm which he now owns. Started practicing law in Des Moines in 1930. Married Grace Johnson of Omaha, Neb., 1933. Father of ten children (George, Jr., Bernard, Jean, John, Dennis, Richard, Brian, Kathleen, Michael and Joseph). Was acting city solicitor for Des Moines, 1936-1938. During war was chief enforcement attorney for Iowa Price Administration. Former state deputy Knights of Columbus of Iowa, active in Boy Scout movement. Member Chamber of Commerce and Kiwanis Club. State co-chairman National Conference of Christians and Jews. State Representative Polk county, 53rd General Assembly. Senate minority floor leader in 55th to 58th General Assemblies. Seventh session in General Assembly.



O'MALLEY, George E., Des Moines
Democrat

30th Senatorial District—Polk County

Born in Dallas county on a farm near Bouton, Iowa, September 18, 1905. Attended Bouton grade school, Dowling high school, Des Moines, and graduated in 1923 from Perry high school, Perry, Iowa. Graduated from Creighton University in 1930 with A.B. and LL.B. degrees. Prior to graduation, actively farmed in Dallas county on farm which he now owns. Started practicing law in Des Moines in 1930. Married Grace Johnson of Omaha, Nebraska, 1933. Father of ten children (George, Jr., Bernard, Jean, John, Dennis, Richard, Brian, Kathleen, Micheal and Joseph). Was acting city solicitor for Des Moines, 1936-1938. During war was chief enforcement attorney for Iowa Price Administration. Former state deputy Knights of Columbus of Iowa, active in Boy Scout movement. Member Chamber of Commerce and Kiwanis club. State co-chairman National Conference of Christians and Jews. State Representative Polk county, 53rd G.A. Senate minority floor leader in 55th to 58th G.A.'s.





O'MALLEY, George E., Des Moines
Democrat

30th Senatorial District—Polk County
Born in Dallas County on a farm near Bouton, Iowa, September 18, 1905. Attended Bouton Independent grade school, later attended Dowling high in Des Moines for two years and graduated from Perry high school, Perry, Iowa, in 1923. Graduated from Creighton University in 1930 with A.B. and LL.B. degrees. Prior to graduation actively farmed in Dallas county on farm which he now owns. Started practicing law in Des Moines in 1930. In the years 1936-1938 was in city legal department as acting city solicitor for Des Moines. During the war was chief enforcement attorney for the office of price administration in Iowa. Married to Grace Johnson of Omaha, Nebraska, May 20, 1933. Father of ten children. Former state deputy of the Knights of Columbus of Iowa, and is active in the Boy Scout movement and the Des Moines Six Foot club. Member Chamber of Commerce and Kiwanis club. Present State Co-chairman of National Conference of Christians and Jews. State Representative Polk county, 53rd General Assembly. Served in Senate in 54th, 55th, 56th and 57th General Assemblies.



O'MALLEY, George E., Des Moines
Democrat

30th Senatorial District—Polk County

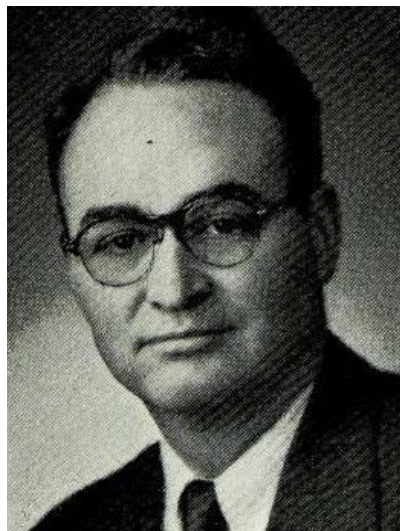
Born in Dallas county on a farm near Bouton, Iowa, September 18, 1905. Attended Bouton independent grade school, later attended Dowling high in Des Moines for two years and graduated from Perry high school, Perry, Iowa, in 1923. Graduated from Creighton university in 1930 with A.B. and LL.B. degrees. Prior to graduation actively farmed in Dallas county on farm which he now owns. Started practicing law in Des Moines in 1930. In the years 1936-1938 was in city legal department as acting city solicitor for Des Moines. During the war was chief enforcement attorney for the office of price administration in Iowa. Married to Grace Johnson of Omaha, Nebraska, May 20, 1933. Father of ten children. Former state deputy of the Knights of Columbus of Iowa and is active in the Boy Scout movement and the Des Moines Six Foot club. Member Chamber of Commerce and Kiwanis club. Present State Co-chairman of National Conference of Christians and Jews. State Representative Polk County, 53rd General Assembly. Served in Senate in 54th, 55th and 56th General Assemblies.



O'MALLEY, George E., Des Moines
Democrat

30th Senatorial District—Polk County

Born in Dallas County on a farm near Bouton, Iowa, September 18, 1905. Attended Bouton Independent grade school, later attended Dowling High in Des Moines for two years and graduated from Perry High School, Perry, Iowa, in 1923. Graduated from Creighton University in 1930 with A.B. and LL.B. degrees. Prior to graduation actively farmed in Dallas County on farm which he now owns. Started practicing law in Des Moines in 1930. In the years 1936-1938 was in city legal department as acting city solicitor for Des Moines. During the war was chief enforcement attorney for the Office of Price Administration in Iowa. Married to Grace Johnson of Omaha, Nebraska, May 20, 1933. Father of ten children. Former state deputy of the Knights of Columbus of Iowa and is active in the Boy Scout movement and the Des Moines Six Foot club. Member Chamber of Commerce and Kiwanis club. Present State Co-chairman of National Conference of Christians and Jews. State Representative Polk County, 53rd General Assembly. Served in Senate in 54th General Assembly.



O'MALLEY, George E., Des Moines

Democrat

30th Senatorial District—Polk County

Born in Dallas county on a farm near Bouton, Iowa, September 18, 1905. Attended Bouton Independent grade school, later attended Dowling high in Des Moines for two years and graduated from Perry high school, Perry, Iowa, in 1923. Graduated from Creighton University in 1930 with A.B. and LL.B. degrees. Prior to graduation actively farmed in Dallas county. Started practicing law in Des Moines in 1930. In the years 1936-1938 was in city legal department as acting city solicitor for Des Moines. During the war was chief enforcement attorney for the Office of Price Administration in Iowa. Married to Grace Johnson of Omaha, Nebraska, May 20, 1933. Father of nine children. Former state deputy of the Knights of Columbus of Iowa and is active in the Boy Scout movement and the Des Moines Six Foot club. Present State Co-chairman of National Conference of Christians and Jews. State Representative Polk county, 53rd General Assembly.



O'MALLEY, George E., Des Moines
Polk County
Democrat

Born in Dallas county on a farm near Bouton, Iowa, September 18, 1905. Attended Bouton Independent grade school, later attending Dowling High in Des Moines for two years and graduating from Perry high school, Perry, Iowa, in 1923. Graduated from Creighton University in 1930 with A.B. and LL.B. degrees. Prior to graduation actively farmed in Dallas county. Started practicing law in Des Moines in 1930. In years 1936-1938 was in city legal department as acting City Solicitor for Des Moines. During the war was chief enforcement attorney for the Office of Price Administration in Iowa. Married to Grace Johnson of Omaha, Nebraska, May 20, 1933, and have eight children. Former state deputy of the Knights of Columbus of Iowa and is active in the Boy Scout movement and the Des Moines Six Foot club.