

**STEPHENS, Richard L., Crawfordsville**  
Republican

**45th Senatorial District—Washington,  
Henry and Jefferson Counties**

Born in Washington County near Ainsworth, Iowa, Feb. 8, 1904, son of D. D. and Blanche (Cocklin) Stephens. Attended Iowa State University. Married Florence Krause Aug. 28, 1926. Two sons, Richard Allan and Boyd. Engaged in farming and livestock production. Served as vice-president of Iowa Farm Bureau Federation for eight years, and as trustee of Iowa University Farm Foundation, treasurer of Iowa Swine Producers Assn., member of board of Iowa Farm Security Administration, and as school board president. Is a member of National Planning Assn., trustee of Iowa 4-H Club Foundation and of Wesley Acres. Member of Iowa Master Farmers' Club. Master corn grower and swine producer. Member Methodist Church, Masons, Shrine. In the House 57th, 58th and 59th sessions. Served in the 60th, 60th Extra, 61st, 62nd, 63rd and 64th G. A. in the Senate.



**STEPHENS, Richard L., Crawfordsville**  
Republican

**5th Senatorial District—Washington  
and Louisa Counties**

Born in Washington County near Ainsworth, Iowa, Feb. 8, 1904, son of D. D. and Blanche (Cocklin) Stephens. Attended Iowa State University. Married Florence Krause Aug. 28, 1926. Two sons, Richard Allan and Boyd. Engaged in farming and livestock production. Served as vice-president of Iowa Farm Bureau Federation for eight years, and as trustee of Iowa University Farm Foundation, treasurer of Iowa Swine Producers Assn., member of board of Iowa Farm Security Administration, and as school board president. Is a member of National Planning Assn., trustee of Iowa 4-H Club Foundation and of Wesley Acres. Member of Iowa Master Farmers' Club. Master corn grower and swine producer. Member Methodist Church, Masons, Shrine. In the house 57th, 58th and 59th sessions. Served in the 60th, 60th Extra, 61st, 62nd, and 63rd G. A. in the senate.



**STEPHENS, Richard L., Crawfordsville  
Republican  
8th Senatorial District—Washington  
and Louisa Counties**

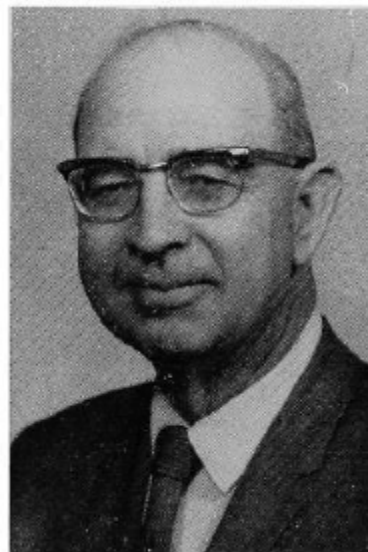
Born in Washington County near Ainsworth, Iowa, Feb. 8, 1904, son of D. D. and Blanche (Cocklin) Stephens. Attended Iowa State University. Married Florence Krause Aug. 28, 1926. Two sons, Richard Allan and Boyd. Engaged in farming and livestock production. Served as vice-president of Iowa Farm Bureau Federation for eight years, and as trustee of Iowa University Farm Foundation, treasurer of Iowa Swine Producers Assn., member of board of Iowa Farm Security Administration, and as school board president. Is a member of National Planning Assn., trustee of Iowa 4-H Club Foundation and of Wesley Acres. Is president of Iowa Master Farmers' Club. Master corn grower and swine producer. Member Methodist Church, Masons, Shrine. In the house 57th, 58th and 59th sessions. Served in the 60th, 60th Extra, 61st and 62nd G. A. in the senate.

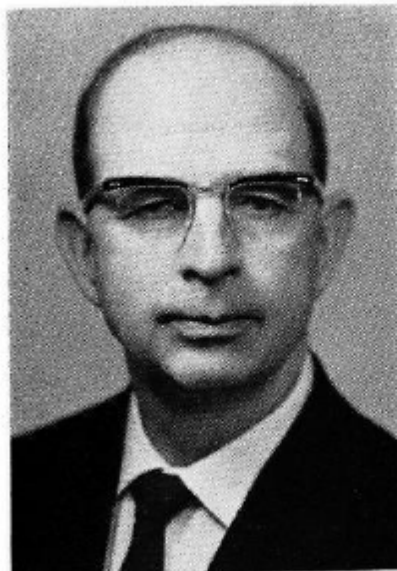


**STEPHENS, Richard L., Ainsworth**  
Republican

**10th Senatorial District—Washington  
and Louisa Counties**

Born in Washington County near Ainsworth, Iowa, Feb. 8, 1904, son of D. D. and Blanche (Cocklin) Stephens. Attended Iowa State University. Married Florence Krause Aug. 28, 1926. Two sons, Richard Allan and Boyd. Engaged in farming and livestock production. Served as vice-president of Iowa Farm Bureau Federation, for eight years, and as trustee of Iowa University Farm Foundation, treasurer of Iowa Swine Producers Association, member of board of Iowa Farm Security Administration, and as school board president. Is a member of National Planning Association, trustee of Iowa 4-H Club Foundation and of Wesley Acres. Is president of Iowa Master Farmers' Club. Has been chosen master corn grower and master swine producer. Member Methodist Church, Masons, Kaaba Shrine. Served in the house in the 57th, 58th and 59th sessions before moving to the senate.





**STEPHENS, Richard L., Ainsworth**  
Republican

**10th Senatorial District—Washington  
and Louisa Counties**

Born in Washington County near Ainsworth, Iowa, Feb. 8, 1904, son of D. D. and Blanche (Cocklin) Stephens. Attended Iowa State University. Married Florence Krause Aug. 28, 1926. Two sons, Richard Allan and Boyd. Engaged in farming and livestock production. Served as vice-president of Iowa Farm Bureau Federation, for eight years, and as trustee of Iowa University Farm Foundation, treasurer of Iowa Swine Producers Association, member of board of Iowa Farm Security Administration, and as school board president. Is a member of National Planning Association, trustee of Iowa 4-H Club Foundation and of Wesley Acres. Is president of Iowa Master Farmers' Club. Has been chosen master corn grower and master swine producer. Member Methodist Church, Masons, Kaaba Shrine. Served in the house of representatives in the 57th, 58th and 59th General Assemblies before moving to the senate.

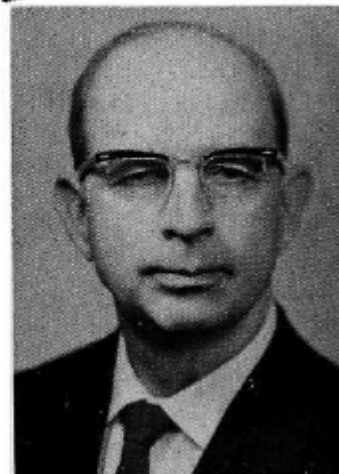
**STEPHENS, Richard Lytle, Ainsworth  
Washington County  
Republican**

Born in Washington county near Ainsworth, Feb. 8, 1904, son of D. D. and Blanche Cooklin Stephens. Educated in Ainsworth and Washington schools. Attended Iowa State University. Married Florence Krause Aug. 28, 1926. Two sons, Richard Allan and Boyd. Engaged in farming and livestock production. Served as vice president of Iowa Farm Bureau Federation for eight years and as trustee of Iowa State University Farm Foundation, treasurer of Iowa Swine Producers' Association, and as school board president. Is presently member of National Planning Association, trustee of Iowa 4-H Club Foundation and of Wesley Acres, vice-president of U. S. National Farm Policy Council. Has been chosen Master Farmer, Master Corn Grower and Master Swine Producer. Member Methodist church, Masons, Gamma Sigma Delta, honorary agricultural fraternity. Serving third term.



**STEPHENS, Richard Lytle, Ainsworth**  
**Washington County**  
**Republican**

Born in Washington county near Ainsworth, February 8, 1904, son of D. D. and Blanche Cocklin Stephens. Educated in Ainsworth and Washington schools. Attended Iowa State College. Married Florence Krause August 23, 1926. Two sons, Richard Allan and Boyd. Engaged in farming and livestock production. Served as vice president of Iowa Farm Bureau Federation for eight years and as trustee of Iowa State College Farm Foundation, treasurer of Iowa Swine Producers' Association, and as school board president. Is presently member of National Planning Association. Has been chosen Master Farmer, Master Corn Grower and Master Swine Producer. Member Methodist church, Masons, Gamma Sigma Delta, honorary agricultural fraternity, member of 57th and 58th General Assemblies. Serving second term.



**STEPHENS, Richard Lytle, Ainsworth**  
**Washington County**  
Republican

Born in Washington county near Ainsworth, February 8, 1904, son of D. D. and Blanche Cocklin Stephens. Educated in Ainsworth and Washington schools. Attended Iowa State College. Married Florence Krause August 28, 1926. Two sons, Richard Allan and Boyd. Engaged in farming and livestock production. Served as vice president of Iowa Farm Bureau Federation for eight years and as trustee of Iowa State College Farm Foundation, treasurer of Iowa Swine Producers' Association, and as school board president. Is presently member of National Planning Association and Board of Trustees of Iowa Blue Shield medical service. Has been chosen Master Farmer, Master Corn Grower, Master Swine Producer. Member Methodist church, Masons, Gamma Sigma Delta, honorary agricultural fraternity. Serving first term.

