

**MESSERLY, Francis L., Finchford**

Republican

**32nd Senatorial District—Black Hawk  
County**

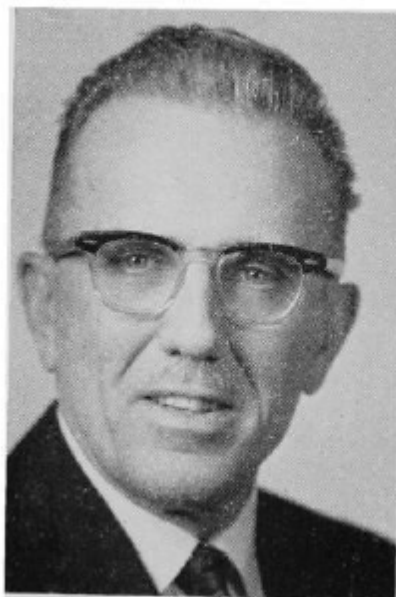
Born April 21, 1915, in Cedar Falls, the son of Edward and Essie Messerly. Attended public schools in Cedar Falls, graduated from Finchford. Operated general merchandise business 10 years. Is in investment management. Married Mary Hamlin. Father of a daughter, Carol, and a son, Randy. Member Finchford Community Church, Masons, Farm Bureau and Shrine. Served on board of supervisors, Black Hawk County 1959-60. Member of the House of Representatives 59th, 60th and 60th Extra General Assemblies. Served in the 61st, 62nd, 63rd and 64th General Assemblies in the Senate.



**MESSERLY, Francis L., Finchford**  
Republican  
**32nd Senatorial District—Black Hawk  
County**

Born April 21, 1915, in Cedar Falls, the son of Edward and Essie Messerly. Attended public schools in Cedar Falls, graduated from Finchford. Operated general merchandise business 10 years. Is a business building contractor. Married Mary Hamlin and the father of a daughter, Carol, and son, Randy. Member Finchford Community Church, Masons, Farm Bureau, Rotary and Shrine. Served on board of supervisors, Black Hawk County 1950-1960. Member of Finchford Community Church. Member of the house of representatives 59th, 60th, and 60th Extra General Assemblies. Served in the 61st, 62nd, and 63rd General Assemblies in the senate.





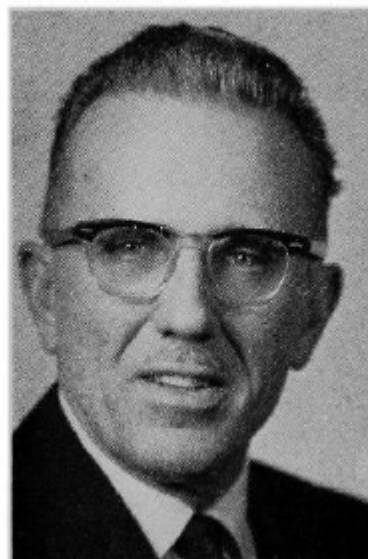
**MESSERLY, Francis L., Finchford**  
Republican

**32nd Senatorial District—Black Hawk  
County**

Born April 21, 1915, in Cedar Falls, the son of Edward and Essie Messerly. Attended public schools in Cedar Falls, graduated from Finchford. Operated general merchandise business 10 years. Is a business building contractor. Married Mary Hamlin and the father of a daughter, Carol, and son, Randy. Member Masons, Farm Bureau, Rotary and Shrine. Served on board of supervisors, Black Hawk County 1950-1960. Member of Finchford Community Church. Member of the house of representatives in the 59th, 60th and 60th Extra General Assemblies; first term in senate, second session.

**MESSERLY, Francis L., Finchford**  
Republican  
**34th Senatorial District—Black Hawk**  
**County**

Born April 21, 1915, in Cedar Falls, the son of Edward and Essie Messerly. Attended public schools in Cedar Falls, graduated from Finchford. Operated general merchandise business 10 years. Is a business building contractor. Married Mary Hamlin and the father of a daughter, Carol, and son, Randy. Member Odd Fellows, Masons, Farm Bureau, and Izaak Walton League. Served on board of supervisors, Black Hawk County 1950-1960. Member of Finchford Community Church. Member of the house of representatives in the 59th and 60th General Assemblies; first term in senate.





**MESSERLY, Francis L., Finchford**  
**Black Hawk County**

Republican

Born April 21, 1915, in Cedar Falls, the son of Edward and Essie Messerly. Attended public schools in Cedar Falls, graduated from Finchford. Operated general merchandise business 10 years. Is a business building contractor. Married Mary Hamlin and the father of a daughter, Carol, and son, Randy. Member Odd Fellows, Masons, Farm Bureau, and Izaak Walton League. Served on board of supervisors, Black Hawk County 1950-1960. Member of Finchford Community Church. Serving second term.

**MESSERLY, Francis L., Finchford**  
**Black Hawk County**  
Republican

Born April 21, 1915, in Cedar Falls, the son of Edward and Essie Messerly. Attended public schools in Cedar Falls, graduated from Finchford. Operated general merchandise business 10 years. Married Mary Hamlin and the father of two children, a daughter Carol, 19 and son Randy, 10. Member Odd Fellows, Masons, Farm Bureau. Served on board of supervisors, Black Hawk County 1950-1960. Member of Finchford Community Church. Serving first term.

