



PETERSON, Louis A., Lawton
District 52
Republican

Born March 5, 1909, in Lawton. Son of Herman and Mary H. Peterson. Graduated high school 1927. He and wife, Bessie, have three children: Karen, Joyce and Dale. Member and ruling elder of Presbyterian Church, Sioux City, Kiwanis, Lawton Community Club, Farm Bureau, chairman of County Zoning Adjustment Board. Served in 59th, 60th, 60th Extra, 63rd, and 65th General Assemblies.



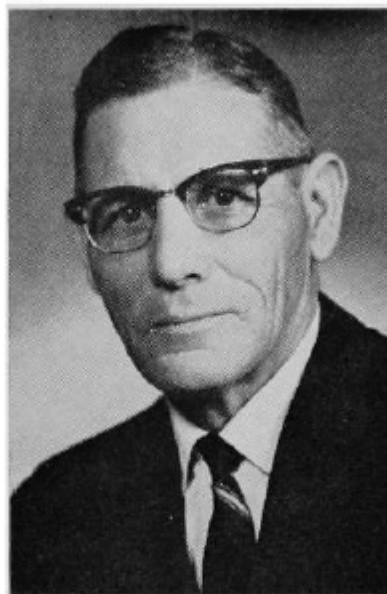
PETERSON, Louis A., Lawton
Woodbury County

Republican

Born March 5, 1909, in Lawton, Iowa. Son of Herman and Mary H. Peterson. Graduated from high school, 1927. Mr. Peterson and his wife, Bessie, have three children: Karen, Joyce and Dale. Member of Presbyterian Church, Sioux City, Kiwanis, Lawton Community Club, Farm Bureau. Served on Woodbury County Fair Board, Woodbury County Library Board, past president of county Farm Bureau, county Extension Council and Lawton School Board. Served in the 59th, 60th, 60th Extra, 62nd, and 63rd General Assemblies.

PETERSON, Louis A. Lawton
Woodbury County
Republican

Born March 5, 1909, in Lawton, Iowa. Son of Herman and Mary H. Peterson. Graduated from high school, 1927. Mr. Peterson and his wife, Bessie, have three children: Karen, Joyce and Dale. Member of Presbyterian Church, Sioux City Kiwanis, Lawton Community Club, Farm Bureau. Served on Woodbury County Fair Board, Woodbury County Library Board, past president of county Farm Bureau, county Extension Council and Lawton School Board. Served in the 59th, 60th, 60th Extra and 62nd General Assemblies.



PETERSON, Louis A., Lawton
Woodbury County
Republican

Louis A. Peterson, 53, Lawton, Republican, is serving his second term in the Iowa House. He is a farmer and a member of the Farm Bureau. He was born in Lawton, attended grade and high school there. He has had 25 years experience in community and county affairs, holding posts on school board, county library board, extension board and fair board. He is an elder in the Presbyterian Church. Mr. Peterson and his wife, Bessie, have three children.





PETERSON, Louis A., Lawton
Woodbury County
Republican

Louis A. Peterson, 51, Lawton, Republican, is serving his first term in the Iowa House. He is a farmer and a member of the Farm Bureau. He was born in Lawton, attended grade and high school there. He has had 25 years experience in community and county affairs, holding posts on the school board, county library board, extension board and fair board. He is an elder in the Presbyterian Church. Peterson and his wife, Bessie, have three children.