

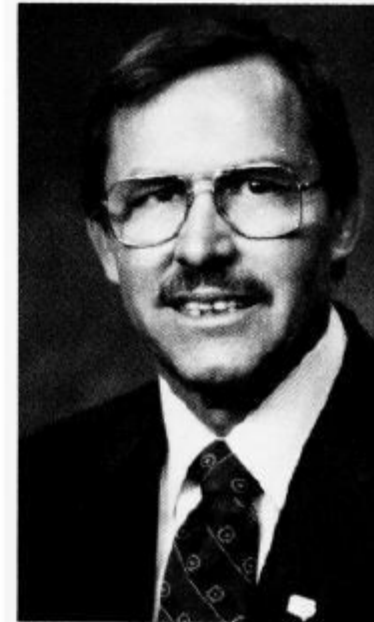
**PONCY, Charles N. - Ottumwa
District 65
Democrat**

Birth: March 2, 1922, Wapello County. **Parents:** Charles F. and Elsie McDonough Pency. **Education:** Graduated Ottumwa High School, 1940. **Military service:** World War II. **Spouse:** Naomi L. McCrory, 1942. **Children:** 2 sons: Charles N. and Paul D. **Activities:** Retired. Former low rent housing commissioner. President, Local 1141 A.F.S.C.M.E. and secretary, Ottumwa Labor Council. President, Wapello County Advisory Committee. Director: School Employee's Credit Union and in Community Action Program. Member: NAACP, Izaak Walton, College Aid Commission, Democrat's 80s Club, Truman Club, Eagles, Elks, American Legion. Chair, Department of Iowa American Legion Legislative Commission. **Term:** Eleventh.



**PONCY, Charles N. - Ottumwa
District 65
Democrat**

Birth: March 2, 1922, Wapello County. **Parents:** Charles F. and Elsie McDonough Poncy. **Education:** Graduated Ottumwa High School, 1940. **Military service:** World War II veteran. **Spouse:** Naomi L. McCrory, 1942. **Children:** 2 sons: Charles N. and Paul D. **Activities:** Retired. Former low rent housing commissioner. President, Local 1141 A.F.S.C.M.E. and secretary, Ottumwa Labor Council. President, Wapello County Advisory Committee. Director: School Employee's Credit Union and in Community Action Program. Member: NAACP, Izaak Walton, College Aid Commission, Democrat's 80s Club, Truman Club, Eagles, Elks, American Legion. Chair, Department of Iowa American Legion Legislative Commission. **Term:** Tenth.



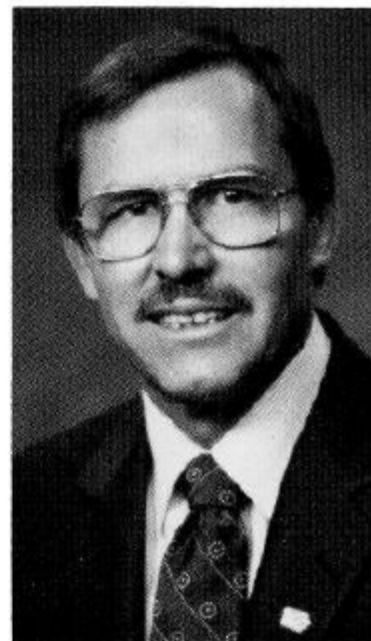


**PONCY, Charles N. — Ottumwa
District 65
Democrat**

Born March 2, 1922 in Wapello County, son of Charles F. and Elsie McDonough Poncy. Graduated Ottumwa High School 1940. Married Naomi L. McCrory, 1942; sons: Charles N. and Paul D. Lutheran. World War II. Retired. Former low rent housing commissioner, President Local 1141, A.F.S.C. & M.E. and secretary, Ottumwa Labor Council; president, Wapello County Advisory Committee. Director, School Employee's Credit Union; director in Community Action Program. Member: NAACP, Izaak Walton, College Aid Commission, Democrat's 80's Club, Truman Club, Eagles, Elks, American Legion. Chairman, Department of Iowa American Legion Legislative Commission. Ninth term.

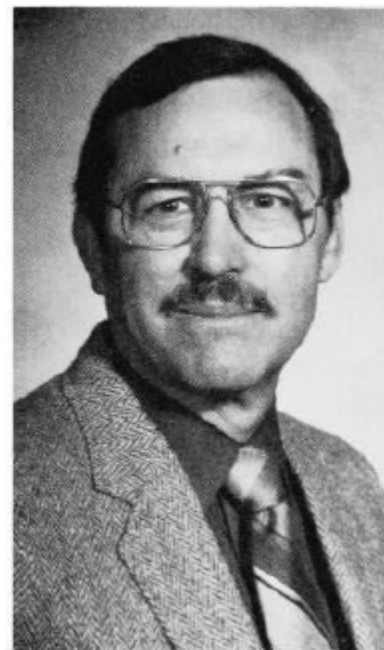
**PONCY, Charles N. — Ottumwa
District 65
Democrat**

Born March 2, 1922 in Wapello County, son of Charles F. and Elsie McDonough Poney. Graduated Ottumwa High School 1940. Married Naomi L. McCrory, 1942; sons: Charles N. and Paul D. Lutheran. World War II. Retired. Former low rent housing commissioner, President Local 1141, A.F.S.C. & M.E. and Secretary Ottumwa Labor Council, President, Wapello County Advisory Committee. Director, School Employee's Credit Union, Director in Community Action Program, Member: NAACP, Izaak Walton, College Aid Commission, Democrat's 80's Club, Truman Club, Eagles, Elks, American Legion, Secretary of Department of Iowa American Legion Legislative Commission. Eighth term.



**PONCY, Charles N. — Ottumwa
District 65
Democrat**

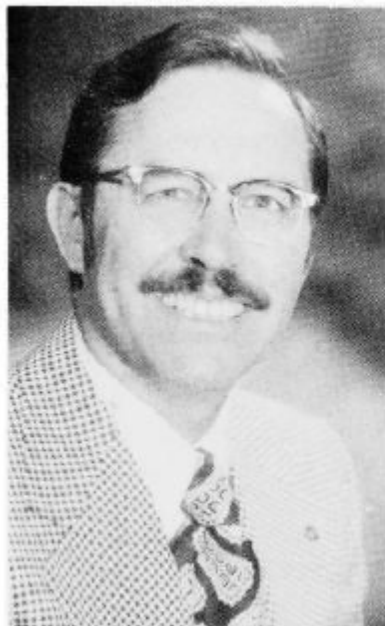
Born March 2, 1922, in Wapello County, son of Charles F. and Elsie McDonough Poncy. Graduated Ottumwa High School, 1940. Married Naomi L. McCrory, 1942; sons: Charles N. and Paul David. Lutheran. Served in World War II. Uncertified school employee and low rent housing commissioner. Secretary, Local 1141 and Ottumwa Labor Council. President, Wapello County Advisory Committee. Director, School Employee Credit Union. Member: NAACP, Izaak Walton League, Higher Education Facilities Commission, A.F.S.C. and M.E., New Frontier Club, American Legion and Elks. Seventh term.



**PONCY, Charles N. — Ottumwa
District 89
Democrat**

Born March 2, 1922, in Wapello County, son of Charles F. and Elsie McDonough Poncy. Graduated Ottumwa High School, 1940. Married Naomi L. McCrory, 1942; sons: Charles N. and Paul David. Lutheran. Served in World War II. Uncertified school employee and low rent housing commissioner. Secretary, Local 1141 and Ottumwa Labor Council. President, Wapello County Advisory Committee. Director, School Employee Credit Union. Member: N.A.A.C.P., Izaak Walton, Higher Education Facilities Commission, A.F.S.C. and M.E., New Frontier Club, American Legion, and Elks. Sixth term.



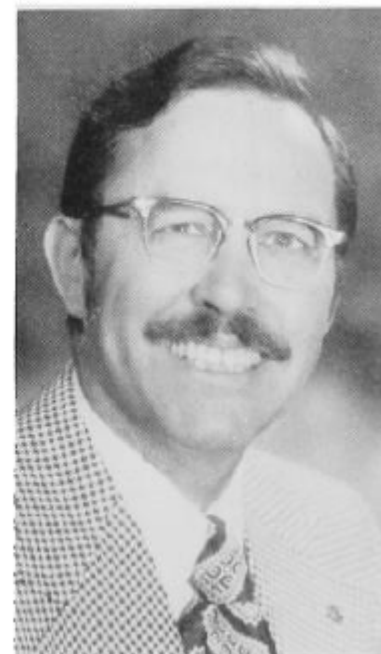


PONCY, Charles N., Ottumwa
District 89
Democrat

Born March 2, 1922, in Wapello County, son of Charles F. and Elsie McDonough Poncy. Graduated Ottumwa High School 1940. Married Naomi McCrory, 1942; sons: Charles N., Dr. Paul Poncy. Lutheran. School district maintenance engineer, low-rent housing commissioner for Ottumwa. Secretary of Local 1141, A.F.S.C. and M.E. Served in World War II. Member Ottumwa Labor Council, president Wapello County Advisory Committee, director school employees credit union, member American Legion and New Frontier Club.

PONCY, Charles Nelson, Ottumwa
District 89
Democrat

Born March 2, 1922, in Wapello County, son of Charles F. and Elsie McDonough Ponce. Graduated Ottumwa High School 1940. Married Naomi McCrory, 1942; sons: Charles N., Dr. Paul Ponce. Lutheran. School district maintenance engineer, low-rent housing commissioner for Ottumwa. Secretary of Local 1141, A.F.S.C. and M.E. Served in World War II. Member Ottumwa Labor Council, president Wapello County Advisory Committee, director school employees credit union, member American Legion and New Frontier Club. Served in 62nd, 63rd, 65th General Assemblies.





**PONCY, Charles Nelson, Ottumwa
District 89
Democrat**

Born March 2, 1922, in Wapello County, son of Charles F. and Elsie McDonough Poncy. Graduated Ottumwa High School 1940; Married Naomi McCrory 1942; two sons: Charles N. and Dr. Paul Poncy. Lutheran, school district maintenance engineer, Low-rent housing commissioner for Ottumwa, secretary of Local 1141, A.F.S.C. and M.E. Served in World War II. Member Ottumwa Labor Council, president Wapello County Advisory Committee, director school employees credit union, member American Legion and New Frontier Club. Served in the 62nd and 63rd General Assembly.



**PONCY, Charles Nelson, Ottumwa
Wapello County
Democrat**

Born March 2, 1922, in Wapello County. Son of Charles F. and Elsie McDonough Poncy. Graduated from Ottumwa High School, 1940. Married Naomi McCrory, 1942, and they have two sons, Charles N. and Paul David. Lutheran. School District Maintenance Engineer. Secretary Local 1141, A.F.S.C. and M.E. Member Ottumwa Labor Council; Mayor's Advisory Committee; Director on Credit Union. Served in World War II. Elected to second term.

**PONCY, Charles Nelson, Ottumwa
Wapello County
Democrat**

Born March 2, 1922, in Wapello County. Son of Charles F. and Elsie McDonough Poncy. Graduated from Ottumwa High School, 1940. Married Naomi McCrory, 1942, and they have two sons, Charles N. and Paul David. Lutheran. School District Maintenance Engineer. Secretary Local 1141, A.F.S.C. and M.E. Member Ottumwa Labor Council; Mayor's Advisory Committee; Director on Credit Union. Served in World War II. Elected to first term.

