

**BERGMAN, Irvin L., Harris**  
**2nd Senatorial District**  
Republican

Born Jan. 5, 1911 in Harris, son of John and Tena Bergman. Graduated Harris High School, 1929. Married Vera Donnenwerth, 1933. Children: Jerry (deceased), John, Judith, Mary. He owns and assists in the operation of Bergman Farms. Member: St. John's Lutheran Church, Osceola County Farm Bureau. Served on Harris Community School Board 1940-1957, Osceola County School Board 1957-1965, Harris Town Council 10 years, director Farmers Mutual Insurance Association of Osceola County, Osceola County Fair Board. Three terms in House. Second term in Senate.



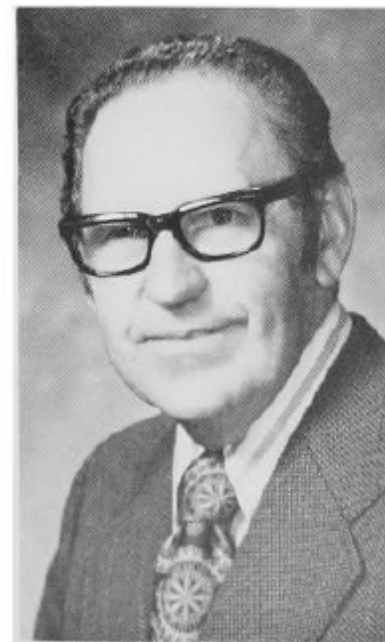
**BERGMAN, Irvin L., Harris**  
**2nd Senatorial District**  
Republican

Born Jan. 5, 1911 in Harris, son of John and Tena Bergman. Graduated Harris High School, 1929. Married Vera Donnenwerth, 1933. Children: Jerry (deceased), John, Judith, Mary. He owns and assists in the operation of Bergman Farms. Member: St. John's Lutheran Church, Osceola County Farm Bureau. Served on Harris Community School Board 1940-1957, Osceola County School Board 1957-1965, Harris Town Council 10 years, director Farmers Mutual Insurance Association of Osceola County, Osceola County Fair Board. Three terms in House. Second term in Senate.



**BERGMAN, Irvin L., Harris**  
Republican  
**2nd Senatorial District**

Born Jan. 5, 1911, in Harris, Iowa, son of John and Tena Bergman. Graduated from Harris High School 1929. Married Vera Donnenwerth, Harris, 1933. Children: Jerry (deceased), John H., Judith (Mrs. Mark Carrico), and Mary. Owns and operates 650 acre farm. Member St. John's Lutheran Church, Harris Community Club, Osceola County Farm Bureau. Served on Harris Community School Board 1940-1957, Osceola County School Board 1957-1965, Harris Town Council (ten years), director Farmers Mutual Insurance Association of Osceola County, Osceola County Fair Board. Three terms in Iowa House. First term, Senate.



**BERGMAN, Irvin L., Harris**  
Republican  
**2nd Senatorial District**

Born in Harris, Iowa, Jan. 5, 1911, son of John and Tena Bergman. Graduated from Harris High School 1929. Married Vera Donnenwerth of Harris 1933. Four children: Jerry (deceased), John H., Mrs. Mark Carrico, and Mary. Owns and operates 650-acre farm. Member St. John's Lutheran Church, Harris Community Club, Osceola County Farm Bureau. Served on Harris Community School Board 1940-1957, Osceola County School Board 1957-1965, Harris Town Council (10 years), director Farmers Mutual Ins. Ass'n of Osceola County, Osceola County Fair Board. Three terms in Iowa House. First term in Iowa Senate.





**BERGMAN, Irvin L. Harris**  
**Dickinson, Lyon and Osceola Counties**  
Republican

Born Jan. 4, 1911, in Harris, Iowa. Son of John and Tena Miller Bergman. Attended Harris Consolidated Schools. Married Vera Donnenwerth. Four children. Jerry (deceased), John H., Judith (Mrs. Mark Carrico) and Mary. Owns and operates a 650-acre farm. Elder St. John's Lutheran Church; member Rural Area Development Board Osceola County. Helped organize Harris Community Club. Member Farm Bureau; Harris Community School Board 1940-57; Osceola County School Board 1957-65; Harris Town Council ten years; Osceola County Fair Board; Secretary-Treasurer Osceola County Coop Council. Director Osceola County Farmers Mutual Ins. Assn.; member original Advisory Board Vocational School at Sheldon. Serving third term.



**BERGMAN, Irvin L., Harris**

**Lyon-Osceola Counties**

Republican

Born January 5, 1911 in Harris, Iowa. Son of John and Tena Miller Bergman. Educated in the Harris Consolidated Schools. Married Vera Donnenwerth and the father of four children: Jerry (deceased), John H., Judith (Mrs. Mark Carrico) and Mary. Four grandchildren. Owns and operates a 570 acre farm. Member and elder of St. John's Lutheran Church; member of Rural Area Development Board in Osceola County. Helped organize and served as president, secretary and treasurer of Harris Community Club. Member of Farm Bureau. Member of Harris Community School Board 1949-57; Osceola County School Board 1957-65; Harris Town Council ten years; Osceola County Fair Board; Secretary-treasurer of Osceola County Coop Council. Director of Osceola County Farmers Mutual Ins. Assn.; member of Advisory Board for Vocational School at Sheldon at the time of organization. Serving second term.

**BERGMAN, Irvin L., Harris**  
**Lyon-Osceola Counties**  
**Republican**

Born January 5, 1911 in Harris, Iowa. Son of John and Tena Miller Bergman. Educated in the Harris Consolidated Schools. Married Vera Donnenwerth and the father of four children: Jerry (deceased), John H., Judith (Mrs. Mark Carico) and Mary, a student at I.S.U. Three grandchildren. Owns and operates a 570 acre farm. Member of St. John's Lutheran Church; member of Rural Area Development Board in Osceola County. Helped organize and served as president, secretary and treasurer of Harris Community Club. Member of Farm Bureau and P.T.A. Member of Harris Community School Board 1940-57; Osceola County School Board 1957-65; Harris Town Council ten years; Osceola County Fair Board; Secretary-treasurer of Osceola County Co-op Council. Director of Osceola County Farmers Mutual Ins. Ass'n.; member of Advisory Board for Vocational School at Sheldon at the time of organization. Serving first term.

