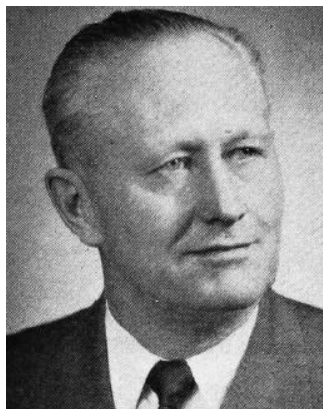


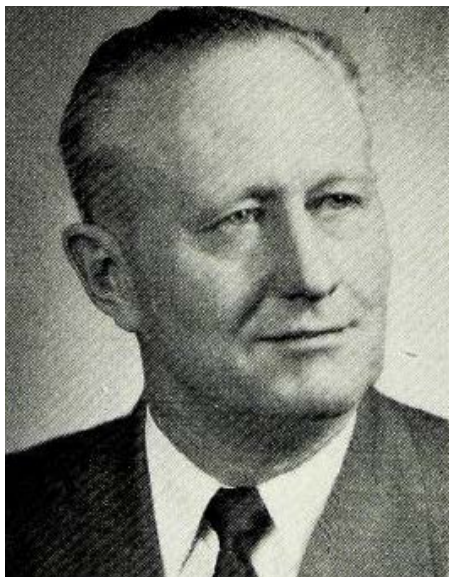
**ANDERSON, Carl T., Wellman Republican**  
**10th Senatorial District—Henry and**  
**Washington Counties**

Born at Slater, Iowa, Story county, September 5, 1889; son of B. F. and Emma (Seashore) Anderson. Farm and livestock operator. Educated Madrid high school, 1905; Gustavus Adolphus college, St. Peter, Minnesota, 1905-1907; University of Iowa 1910-1911; short course at Iowa State College in 1912; taught in rural schools. Married Clementine M. Shaffer, February 8, 1912, Wellman; daughter, Mrs. O. W. Hammond of Des Moines; grandchildren, Hugh and Kathy. Director of Wellman Savings bank; charter member Farm Bureau; served as commissioner on first Washington county soils committee; member of the first tax equalization board; director Mutual Telephone company; Master Farmer 1927; Master Swine Producer 1940; received Skelley Award 1947; Methodist, Mason, Eastern Star, Knights of Pythias and Rotary club



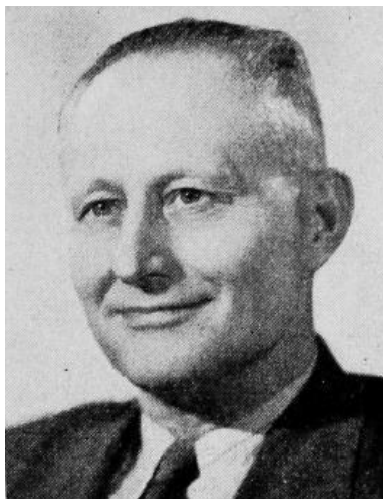
**ANDERSON, Carl T., Wellman**  
**Washington County**  
**Republican**  
**10th Senatorial District**

Born at Slater, Iowa, Story county, September 5, 1889; son of B. F. and Emma (Seashore) Anderson. Farm and live stock operator. Educated Madrid high school, 1905; Gustavus Adolphus College, St. Peter, Minnesota, 1905-1907; University of Iowa, 1910-1911; short course at I.S.C. in 1912; taught in rural schools. Married Clementine M. Shaffer, February 8, 1912, Wellman; daughter, Mrs. O. W. Hammond, of Des Moines; grandchildren, Hugh and Kathy. Director of Wellman Savings Bank; Farm Bureau charter member; member Tax Equalization board; County Soils commissioner; president school board; chairman township trustees; director Mutual Telephone Co.; Executive Board Methodist church; Master Farmer 1927; Master Swine Producer 1940; received Skelley Award 1947; Mason, Eastern Star, Knights of Pythias and Rotary club.



**ANDERSON, Carl T., Wellman**  
**Washington County**  
**Republican**  
**10th Senatorial District**

Born at Slater, Iowa, Story county, September 5, 1889; son of B. F. and Emma (Seashore) Anderson. Farm and live stock operator. Educated Madrid high school 1905; Gustavus Adolphus College, St. Peter, Minnesota, 1905-1907; University of Iowa, 1910-1911; short course at I.S.C. in 1912; taught in rural schools. Married Clementine M. Shaffer, February 8, 1912, Wellman; daughter, Mrs. O. W. Hammond, of Des Moines; grandchildren, Hugh and Kathy. Director of Wellman Savings Bank; Farm Bureau charter member; member Tax Equalization board; County Soils commissioner; president school board; chairman township trustees; director Mutual Telephone Co.; Executive Board Methodist church; Master Farmer 1927; Master Swine Producer 1940; received Skelley Award 1947; Mason, Eastern Star, Knights of Pythias and Rotary club.



**ANDERSON, Carl T., Wellman**  
**Washington County**

Republican

Born at Slater, Iowa, Story county, September 5, 1889; son of B. F. and Emma (Seashore) Anderson. Farm and live stock operator. Educated Madrid high school 1905; Gustavus Adolphus College, St. Peter, Minnesota, 1905-1907; University of Iowa, 1910-1911; short course at I.S.C. in 1912; taught in rural schools. Married Clementine M. Shaffer, February 8, 1912, Wellman; daughter, Mrs. O. W. Hammond, of Des Moines; grandchildren, Hugh and Kathy. Farm Bureau charter member; member Tax Equalization board; served four-year term as County Soils commissioner; president local school board; chairman board of township trustees; director Mutual Telephone Co.; Executive Board M.E. Church; Master Farmer 1927; Master Swine Producer 1940; Received Skelley Award 1947; Mason, Eastern Star, Knights of Pythias and Rotary club.