
FISCAL UPDATE Article

Fiscal Services Division

October 5, 2020



Ground Floor, State Capitol Building

Des Moines, Iowa 50319

515.281.3566


SCHOOL AID FUNDING DASHBOARD UPDATED WITH FY 2021 DATA

School Aid Dashboard. The LSA has updated the interactive Tableau dashboard on school aid funding by legislative district and school district. The dashboard has also changed locations on the LSA site and can now be found on the K-12 Education Funding page located under Publications/Fiscal Analysis/K-12 Education Funding. The direct link for the dashboard is: www.legis.iowa.gov/publications/schoolAid.

The interactive dashboard has been updated with FY 2021 State school aid data by school district, and additional data and features have been added to the enrollment and property tax tabs.

Future Updates. Future updates to the dashboard will include:

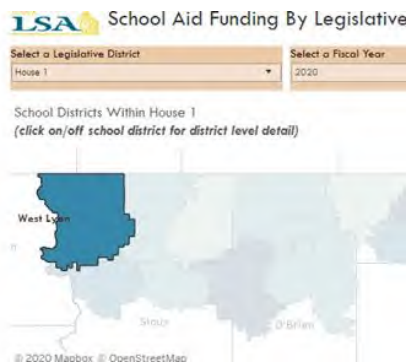
- December 2020: FY 2020 special education deficits.
- July 2021: FY 2022 State school aid data by school district.

Instructions. Instructions on how to navigate the dashboard pages can be found on the Statewide tab of the dashboard by clicking on the  button.

Click the icon again to remove the text box. This dashboard is best viewed on a computer or laptop. Certain elements of the dashboard may not be visible or function on other devices such as a tablet or phone.

Dashboard Tabs. The tabs are located along the top of the visualization. Several of the tabs allow the user to view data by legislative district and school district.

Select a legislative district from the dropdown menu, when available. Senate districts will appear after House districts in the dropdown menu. By default, each chart is summed up to the legislative district totals. Clicking on a school district in the map below the dropdown menu alters the dashboard to show the data for the selected school district.

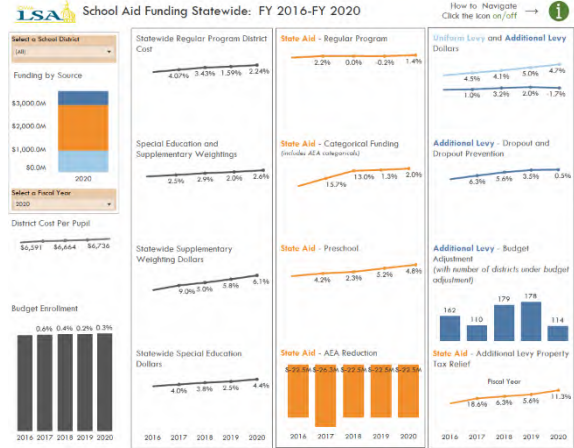


Selecting "Null" from any dropdown menu may cause the dashboard to sum incorrectly. Null values refer to data from school districts that no longer exist; however, it is important the data is available to sum totals in calculations for previous fiscal years.

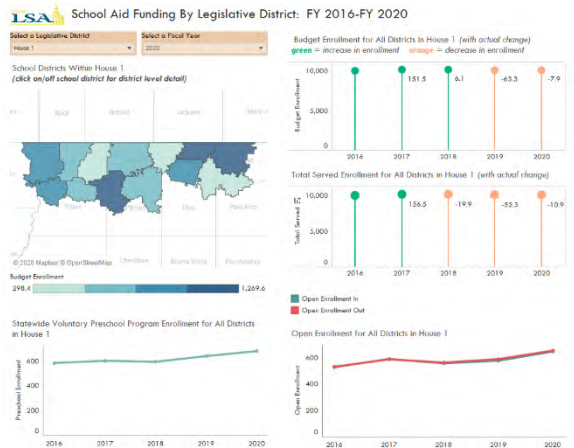
Other dropdown menus may be available to highlight map data by fiscal year or by program. Hovering over charts may provide additional details on each subject or program.

The last tab, School Districts, provides a dropdown to look up legislative districts by school district name. The following briefly describes each tab on the dashboard.

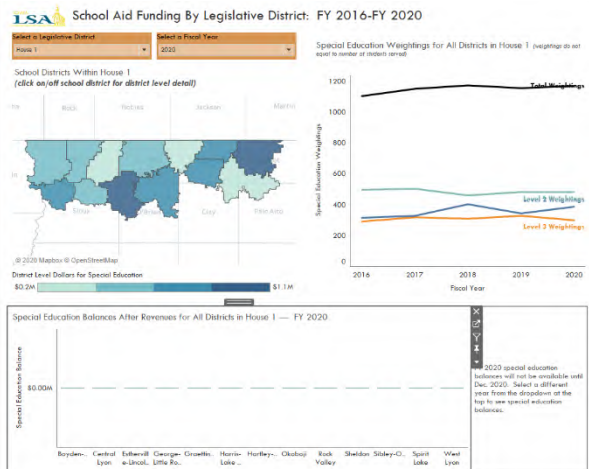
Statewide. The Statewide tab visualizes key components of State school aid and property taxes. The dashboard shows the statewide figures by default. Selecting a school district changes each visualization to reflect only that district's data. Selecting a fiscal year from the dropdown will show only the changes in Funding by Source.



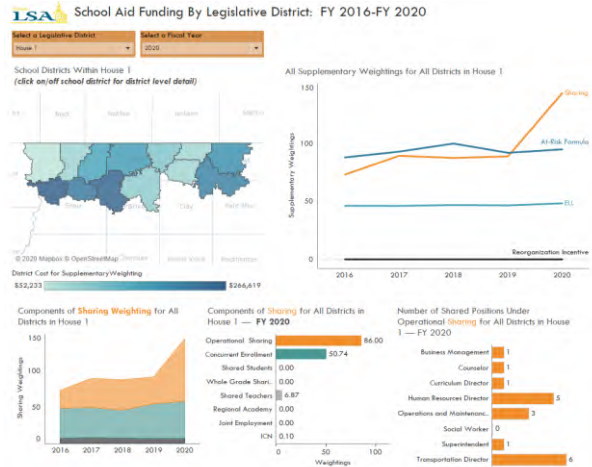
Enrollment. This tab visualizes enrollment data by legislative district and school district, including budget enrollment, total served, preschool enrollment, and open enrollment data. Hovering over budget and total enrollment charts will provide a breakdown of how each of the enrollments is calculated.



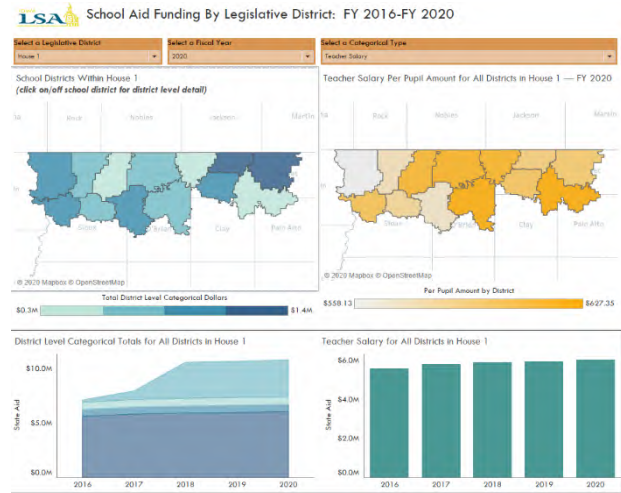
Special Education. This tab visualizes select special education data, including a breakdown of weightings and ending balances. Please note that current fiscal year balances may not be available until the December following the end of the fiscal year. Hovering over the Balances After Revenue chart will provide a look at ending balances going several years back.



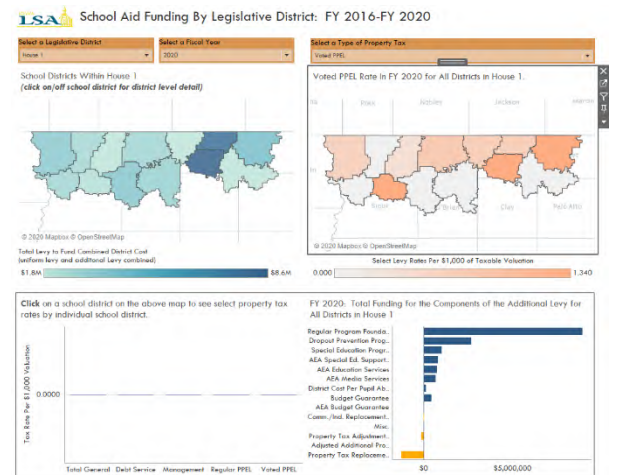
Supplementary Weighting. This tab visualizes select supplementary weightings by type and includes a breakdown of the components that go into supplementary weighting for sharing.



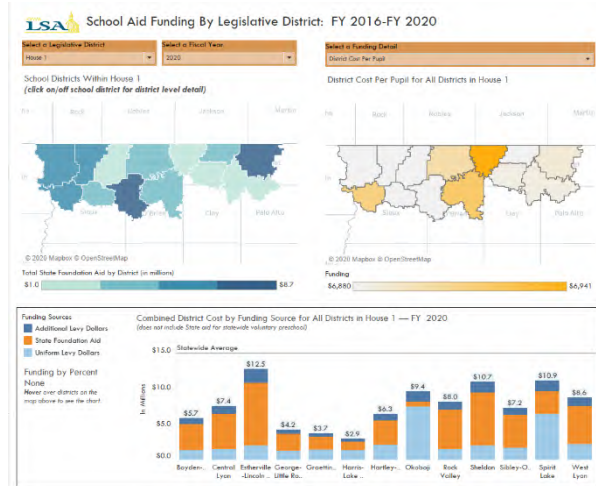
Categoricals. This tab visualizes select categorical funding including per pupil amounts by district and dollar totals.



Property Taxes. This tab visualizes select property tax rates and levies, including total levy to fund the combined district cost, individual select rates, and a breakdown of the components of the additional levy. Selecting a school district from the top left map will enable the visualization to show different types of levy rates for the selected fiscal year.



Combined Funding. This tab visualizes the combined district cost by funding sources. Select funding details are available from the top right dropdown, which will display in the top right map.



Program Detail. This tab visualizes select programs, such as the Transportation Equity Fund and other programs, by funding totals or per pupil amounts. The map defaults to statewide; however, legislative or individual districts may be selected.

School Districts. This tab provides a lookup of legislative districts using the dropdown menu of the current fiscal year's school districts. School districts that existed in previous fiscal years but no longer exist are not included.

LSA Staff Contact: Michael Guanci (515.725.1286) michael.guanci@legis.iowa.gov

Doc ID 1151295