

Standard Form For Members of the Legislature

Name of Representative Kelly, H. Ellis Senator _____

Represented Lee County, Iowa

1. Birthday and place 12 Feb 1900 Brookfield, Missouri

2. Marriage (s) date place

Della Leona Meek Aug 1926 Springfield, Missouri

3. Significant events for example:

A. Business He was a member of the firm of Burton, Dorn and Kelly
Real Estate Brokers of Fort Madison, Iowa

B. Civic responsibilities Mason; Eastern Star; Shriners;
Lyons Hallon League; Lions Club; American Legion

C. Profession Real estate

4. Church membership Presbyterian

5. Sessions served 56th General Assembly 1955

6. Public Offices

A. Local Lee County recorder 5 terms; Lee County Board of Supervisors 1 term;
member of the Rotating Board during World War II;

B. State _____

C. National _____

7. Death 25 Nov 1975 St. Cloud, Florida; buried Mt. Peace Cemetery, St. Cloud, Florida

8. Children No children

9. Names of parents _____

Wells, H. Allen

10. Education

11. Degrees

He attended Park College and Kirksville, Missouri
Normal School

12. Other applicable information

Democrat

- Military service - World War I - U. S. Army
- He was a former supervisor of facilities for the mentally retarded.
- He moved to Florida 11 years before his death.

...ects before the normal start of the school day. Some students who wanted to take specific classes reportedly have been turned down for them because classes were full.

At the Argyle grade school — junior high school building, a former bus garage is used for vocal and instrumental music classes during the day and then for wrestling.

Chairs and instruments must be moved and the wrestling mats put down in the room, which is heated by an overhead heater and reportedly is sometimes too hot, sometimes too cold. The proposal turned down in February reportedly contained a \$50,000 cushion not specifically allocated and did not spell out the replacement or renovation projects at the high school. The current proposal contains a \$10,000 cushion and includes repair or replacement projects plus approximately \$130,000 in remodeling work on classrooms, music and shop areas and the combined cafeteria and auditorium.

The plan for the combined junior high — senior high building is by Kingscott Associates of Davenport. It includes construction on the north, west and south.

Illinois lottery numbers

CHICAGO (AP) — Here are the winning numbers drawn Thursday evening in the weekly Illinois State Lottery:

Lotto

09, 07, 36, 32 and 35.

Bonanza qualifiers

976, 330 and 055.

Mrs. Kenneth Huey, West Point
Richard Huffman, Niota, Ill.
Mrs. Ida James, 1501 Avenue M
Mrs. Mark Marsot, Keokuk
Baby Boy Marsot, Keokuk
Daniel Smith, Donnellson
Mrs. Suzette Stoltenburg, 1633 Avenue G
Todd Thomas, 3018 Avenue I

Death notice

W. Ellis Wells

W. Ellis Wells, 75, St. Cloud, Fla., a former Fort Madison resident and a former state representative from Lee county, died Tuesday, Nov. 25, at St. Cloud.

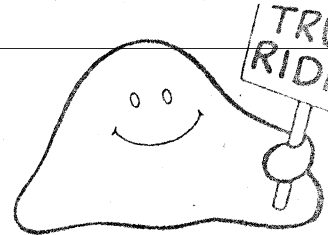
Mr. Wells served in the Iowa Legislature in 1955 and 1956. He also was a former Lee county recorder and during World War II served on the ration board. In addition, he was a former supervisor of facilities for the mentally retarded here and in Red Oak. He was an Army veteran of World I.

He was born Feb. 12, 1900, at Brookfield, Mo. He moved to Florida 11 years ago.

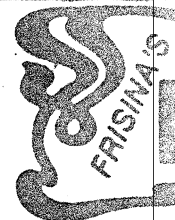
Mr. Wells was a 50-year member and a past master of Claypoole Lodge No. 13 A.F. & A.M. of Fort Madison and was a member of the Union Presbyterian church.

Survivors include his wife, the former Della Meek; and a sister, Mrs. Martha Linch, Arvada, Colo.

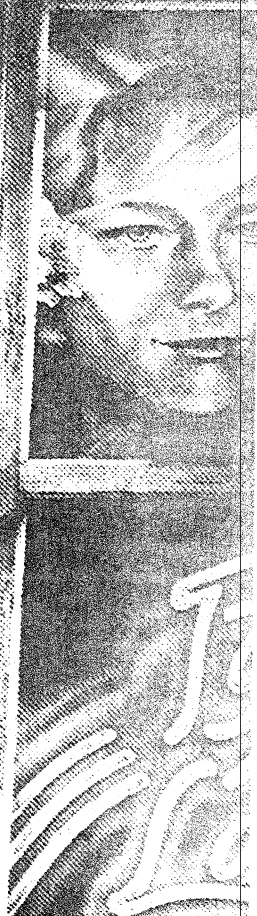
Funeral services were today at the Conrad-Thompson Funeral Home, Kissimmee, Fla. Burial was in Mt. Peace cemetery, St. Cloud.



For Inform:



NOW
"IT'S THE
BOGART V
STOOD IN



STATE

theatre

TONIGHT
7 &
9 P.M.

The story
Buford
Pusser
wanted
told...



Source: Iowa Territorial and State Legislators Collection. Compiled by volunteers and staff at the State Historical Society of Iowa Library, Des Moines, Iowa.

STARRING


EVER

Try out the New Ancestry Search

You searched for **W. Ellis Wells** in **Iowa**

All Iowa State Census Collection, 1836-1925 Results

Page Tools

 Save record to someone in my tree

☐ Save record to my shoebox

 Comments and Corrections

 E-mail image to a friend [View printer-friendly](#)

Make a Connection

Not sure where to start? Often it's helpful to contact others who share your research interests:

Find others searching for Ellis
W Wells

Iowa State Census Collection, 1836-1925

Name: **Ellis W Wells**

Birth Year: abt 1900

Birth Place: Missouri

Gender: Male

Race: White

Marital Status: Single

Census Date: 1 Jan 1925

Residence State: Iowa

Residence County: Lee

Locality: Fort Madison

Relation to Head: Son

Mother: Emma A Stever

Mother's Birth abt 1869
Year:

Mother's Birthplace: Ohio

Father: Wm Wells

Father's Birth abt 1868
Year:

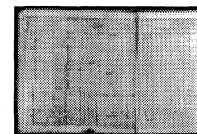
Father's England
Birthplace:

Marriage Place: Missouri

Roll: IA1925_1798

Line: 22

Neighbors: [View others on page](#)



 [View origin image](#)

Save This Record

Save ☐

Ancestry.com. *Iowa State Census Collection, 1836-1925* [database on-line]. Provo, UT, USA: Generations Network, Inc., 2007. Original data: Microfilm of Iowa State Censuses, 1856, 1880, 1895, 1905, 1915, 1925 as well various special censuses from 1836-1897 obtained from the State Historical Society of Iowa via Heritage Quest.

This database contains Iowa state censuses for the following years: 1856, 1885, 1895, 1905, and 1925. It also includes some head of household censuses and other special censuses from 1835-1897. Information available for an individual will vary according to the census year and information requested on the census form. Some of the information contained in this database though includes: name, age, gender, race, birthplace, marital status, and place of enumeration. [Learn more...](#)

Visit Other Generations Network sites

Corporate Info

Affiliate Program

Advertising

Ancestry Blog

Contact Us