

West Des Moines Community School District – Iowa Department of Education

Total Students: 8,846 Assessment data: Grades 3-12

School	Percent Proficient English / Language Arts	Percent Proficient Mathematics	Overall Performance Rating
Clive Learning Academy	65.02	63	57.22
Crestview	55.68	52.57	54.42
Crossroads Park	74.2	78.98	60.33
Fairmeadows	72	75.67	57.2
Hillside	65.79	64.14	58.58
Jordan Creek	76.9	79.35	57.09
Western Hills	62.13	63.46	50.15
Westridge	75.58	83.55	58.67
Indian Hills Junior High	75.31	68.55	57.12
Stillwell Junior High	74.61	64.19	52.25
Valley Southwood 9th grade	76.28	59.06	54.19
Valley High School	77.3	68.33	59.26
Walnut Creek Campus	48.89	11.11	33.48
State Average	70.84	64.97	54.65
WDM District Overall	72.91	67.51	
# of students not proficient in district	1,589	1,909	

GRADUATION RATE (4 YEARS): 93.64%

GRADUATION RATE (5 YEARS): 95.80%

POST SECONDARY READINESS INDEX COMPOSITE: 51.31%

Post Secondary Readiness ACT/SAT: 48.21%

Post Secondary Readiness Career and Tech Ed: 41.76%

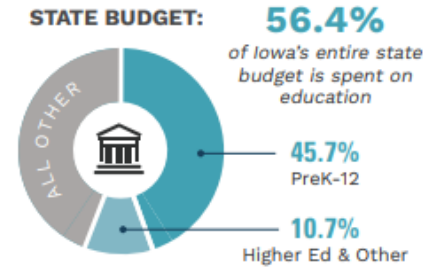
**While WDM has a high graduation rate, scores for post-secondary readiness are very low. Are we preparing our students for success after High School?*

SCAN TO SEE REPORT ON IOWA DOE WEBSITE

Source: <https://www.iaschoolperformance.gov/ECP/StateDistrictSchool/DistrictSummary?k=8527&y=2022>



SCHOOL FUNDING



FY24 Total Education Funding

	AMOUNT	PER STUDENT
STATE AID*	\$3.88 B	\$7,598
LOCAL TAXES	\$2.92 B	\$6,053
SAVE FUNDS	\$626.1 M	\$1,300
FEDERAL FUNDS	\$548.8 M	\$1,140
OTHER FUNDING	\$452.7 M	\$940
TOTAL	\$8.420 B	\$17,031
Per Classroom of 20		\$340,620

WDM TOTAL 2022

Total District Expenditures per Pupil

\$19,711