

State of Iowa  
63rd General Assembly  
House Social Services

As Of: 04/29/2024

Page 1



*Chair*

**Representative**  
Holden, Edgar H.



*Ranking Member*

**Representative**  
Andersen, Leonard C.



**Representative**  
Alt, Don D.



**Representative**  
Blouin, Michael Thomas



**Representative**  
Caffrey, James T.



**Representative**  
Corey, Dean Orville



**Representative**  
Den Herder, Elmer H.



**Representative**  
Dooley, Andrew G.



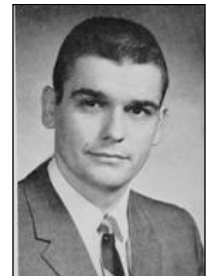
**Representative**  
Doyle, Donald V.



**Representative**  
Duitscher, Lucile



**Representative**  
Dunton, Keith H.



**Representative**  
Ewell, Vernon A.



**Representative**  
Franklin, A. June



**Representative**  
Hamilton, Howard A.



**Representative**  
Huff, William H.



**Representative**  
Jesse, Norman G.



**Representative**  
Kitner, Arthur



**Representative**  
Knight, Harold L.



**Representative**  
Knoblauch, Charles E.



**Representative**  
Lawson, Murray C.



**Representative**  
Lipsky, Joan Miller



**Representative**  
Mayberry, Darwin Vincent



**Representative**  
McCormick, Harold Charles



**Representative**  
Miller, Charles Peter



**Representative**  
Miller, Roy Albert



**Representative**  
Ossian, Conrad



**Representative**  
Perkins, Larry L.



**Representative**  
Peterson, Louis A.



**Representative**  
Rex, Clyde



**Representative**  
Roorda, Norman Paul

State of Iowa  
63rd General Assembly  
**House Social Services**

As Of: 04/29/2024

Page 2



**Representative**  
Sanders, Leo Isaac



**Representative**  
Schroeder, Laverne  
W.



**Representative**  
Sorg, Nathan F.



**Representative**  
Strand, Clair



**Representative**  
Stromer, Delwyn D.



**Representative**  
Strothman, Charles  
F.



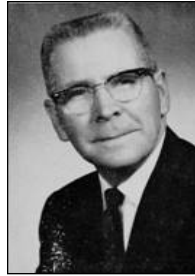
**Representative**  
Tapscott, John E.



**Representative**  
Van Roekel, Gerrit



**Representative**  
Voorhees, Donald  
Edwin



**Representative**  
Warren, Homer L.



**Representative**  
Waugh, Jewell Obert



**Representative**  
Wells, James D.



**Representative**  
Wolfe, Harold E.