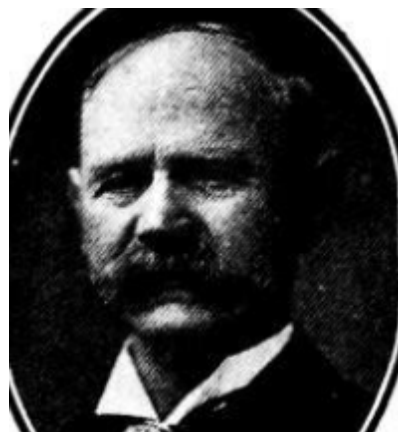
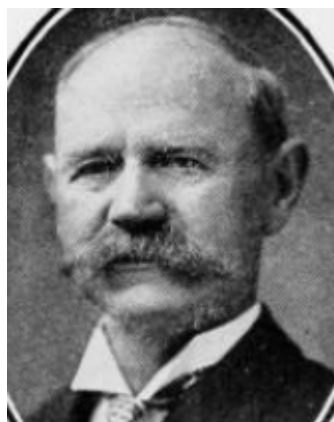


PHILO MILTON JEWELL,



Senator from the Forty-second district, composed of Winneshiek and Howard counties, was born in Mt. Vernon, Knox county, Ohio, January 1, 1848. His parents, who were of English and German descent, moved with their family to Carroll county, Illinois, in 1856. He grew to manhood on a farm and secured his education as a pupil in the Mt. Carroll Seminary, a private institution of learning, and later, attended the Mt. Carroll high school for a few terms. Taught school for about one year. He began the study of medicine in 1870 in the medical department of the University of Michigan, from which institution he graduated in March, 1873. He has been continuously engaged in the practice of medicine and surgery ever since; for over six years in Whiteside county, Illinois, and since November, 1880, in Winneshiek county, Iowa. He was married to Nama Livingston in 1875. He has taken an active interest in politics for many years and was appointed a member of the United States pension board for Winneshiek county in 1897, which position he still fills. Was elected coroner for Winneshiek county in 1899; re-elected in 1901 and 1903. Was elected representative in 1906, re-elected in 1908. Elected senator in 1910. A republican in politics.

PHILO MILTON JEWELL,



Senator from the Forty-second District, composed of Winneshiek and Howard counties, was born in Mt. Vernon, Knox county, Ohio, January 1, 1848. His parents, who were of English and German descent moved with their family to Carroll county, Illinois, in 1856. He grew to manhood on a farm and secured his education as a pupil in the Mt. Carroll Seminary, a private institution of learning, and later, attended the Mt. Carroll high school for a few terms. Taught school for about one year. He began the study of medicine in 1870 in the Medical Department of the University of Michigan, from which institution he graduated in March, 1873. He has been continuously engaged in the practice of medicine and surgery ever since; for over six years in Whiteside county, Illinois, and since November, 1880, in Winneshiek county, Iowa. He was married to Nama Livingston in 1875. They have three children, two daughters and a son. He has taken an active interest in politics for many years and was appointed a member of the United States Pension Board for Winneshiek county in 1897, which position he still fills. Was elected coronor for Winneshiek county in 1899, re-elected in 1901 and in 1903. Was elected Representative in 1906, re-elected in 1908 and elected Senator in 1910. A Republican in politics.



PHILO M. JEWELL,

Representative from Winneshiek county, Iowa, was born at Mount Vernon, Knox county, Ohio, January 1, 1848. His parents, who were natives of the United States, of English and German descent, removed to Carroll county, Illinois, in 1856. He grew up to manhood on a farm and was educated in the public schools and Mount Carroll High school. Taught school for several terms and began the study of medicine in 1870 in the medical department of the University of Michigan, from which he graduated in March, 1873. Has been continuously engaged in the practice of medicine and surgery ever since; practicing over six years in Whiteside county, Illinois, and since November, 1880, in Winneshiek county, Iowa. Was appointed a member of the United States Pension Board for Winneshiek county in 1897, which position he still fills. Elected coroner in 1899, re-elected in 1901 and 1903, which office he vacated January 1, 1907. Was elected Representative November 6, 1906, and re-elected in 1908. A Republican in politics.

PHILO M. JEWELL,

Representative from Winneshiek county, Iowa, was born at Mount Vernon, Knox county, Ohio, January 1, 1848. His parents, who were natives of the United States, of English and German descent, removed to Carroll county, Illinois, in 1856. He grew up to manhood on a farm and was educated in the public schools and Mount Carroll High school. Taught school for several terms and began the study of medicine in 1870 in the medical department of the University of Michigan and graduated from said department in March, 1873. Has been continuously engaged in the practice of medicine and surgery ever since, over six years in Whiteside county, Illinois, and since November, 1880, in Winneshiek county, Iowa. Was appointed a member of the United States Pension Board for Winneshiek county in 1897, which position he still fills. Elected coroner in 1899, re-elected in 1901 and 1903, which office he vacated January 1, 1907. Was elected Representative November 6, 1906. A Republican in politics.