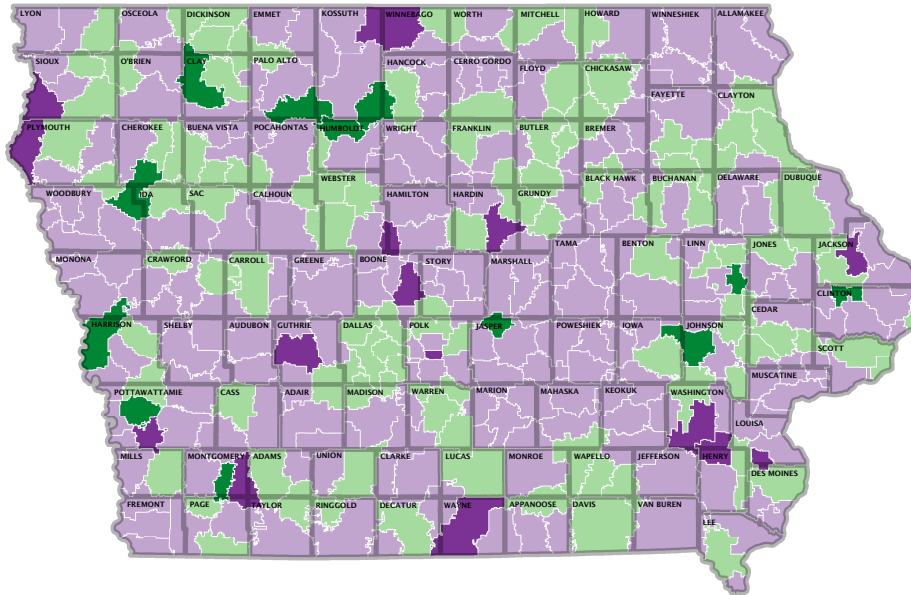


Change in Certified Enrollment and Statewide Voluntary Preschool Program Budget Enrollment — Oct. 2019-Oct. 2020

Certified enrollment is the actual enrollment of the school district on October 1 of each school year, as submitted to the Department of Education. The enrollment is used for school aid funding calculations, including supplementary weighting for shared programs, limited English proficient weighting, nonpublic shared time, open enrollment, home school assistance programs, and dual enrollment of students under competent private instruction.

Percent Change in K-12 Certified Enrollment



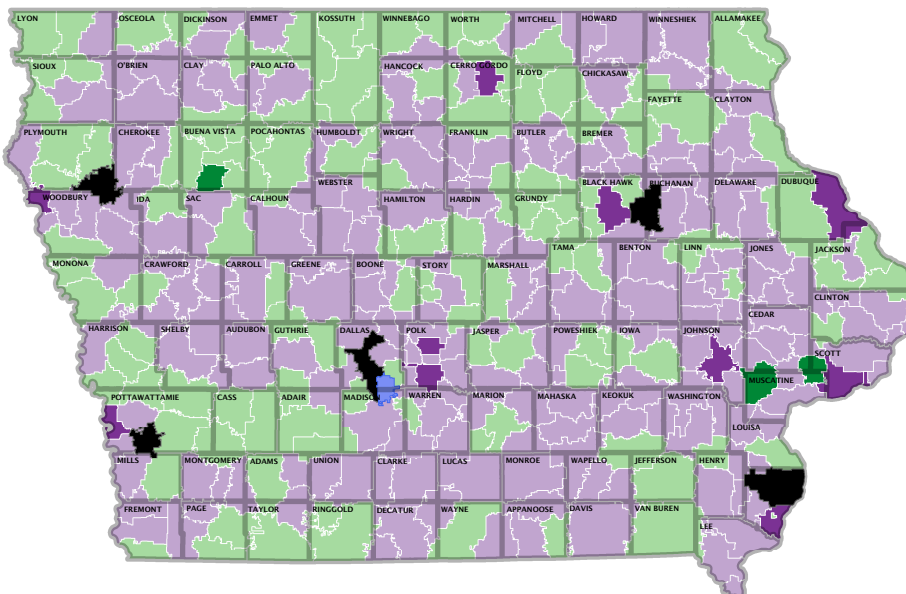
One-Year Percent Change

- 9.1% to -5.1%
- 5.0% to -0.1%
- 0.0% to 4.9%
- 5.0% to 10.1%

- The October 1, 2020, certified enrollment count will impact funding for school districts in the 2021-2022 school year.
- Statewide certified enrollment declined by 5,936 (-1.21%) since the previous year.
- 65.7% of districts experienced a decline, while 34.3% experienced an increase.
- Districts that have an enrollment drop significant enough to impact their budget compared to the previous year may be eligible for a 101.0% budget guarantee, which will increase additional levy property taxes.

The **Statewide Voluntary Preschool Program (SWVPP)** budget enrollment includes students who are age 4 by September 15 in the base year and attending a district's program for 4-year-old children approved by the Department of Education. The preschool budget enrollment is equal to 50.0% of the actual enrollment of eligible students participating in the program.

Actual Change in SWVPP Budget Enrollment



One-Year Actual Change

- 195.0 to -25.1
- 25.0 to -0.1
- 0.0 to 10.0
- 10.1 to 21.0
- New Program in Oct. 2020
- No Eligible Program

- The October 1, 2020, preschool enrollment count will impact funding for school districts in the 2021-2022 school year.
- Statewide budget enrollment declined by 1,326.0 (-10.6%) since the previous year.
- 62.4% of districts experienced a decline, while 37.6% experienced an increase.
- SWVPP funding (State aid from the General Fund) is not subject to a budget guarantee or any hold harmless provision. Any reduction in weightings is a reduction in funding.