

Additional Electric Vehicle and Hybrid-Electric Vehicle Registration Fees

There are 3.6 million vehicles registered in Iowa.

2.4 million are auto and multipurpose vehicles.

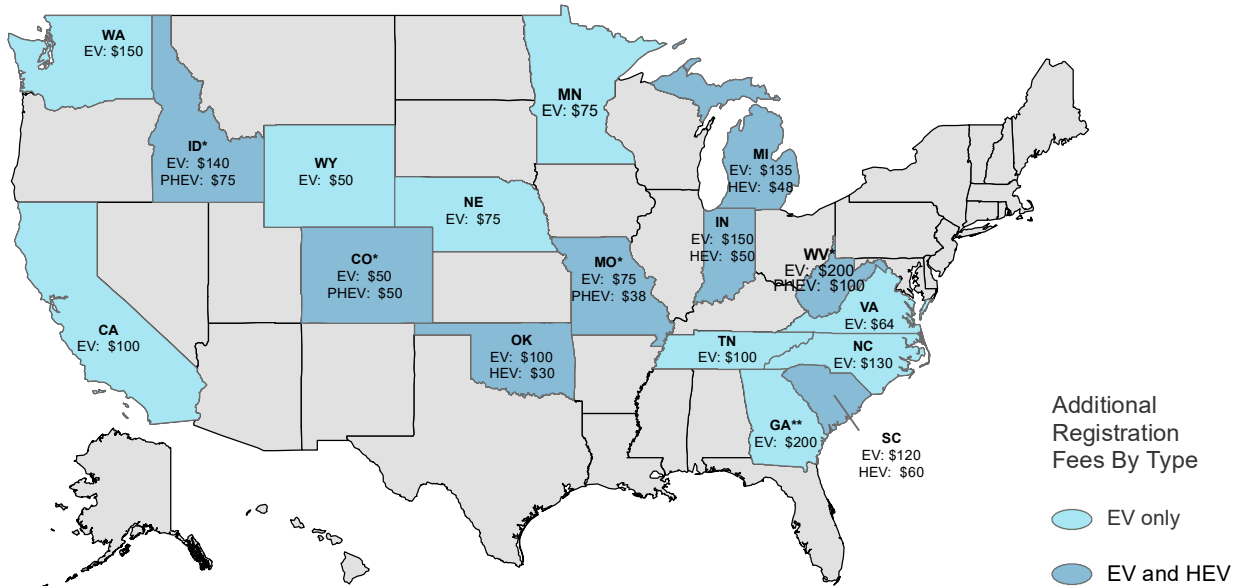
397 are electric vehicles (EV).

27,214 are hybrid electric vehicles (HEV) or plug-in hybrid-electric (PHEV).



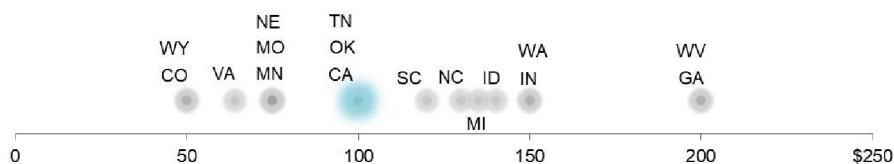
EV registrations have increased since 2014.

As electric vehicle sales increase, states have been looking for alternative ways to capture user fee revenue lost from motor fuel excise taxes. Seventeen states have enacted legislation adding additional vehicle registration fees for EVs. Eight of those states — California, Indiana, Minnesota, Missouri, Oklahoma, South Carolina, Tennessee, and West Virginia — enacted EV or HEV legislation in 2017.



* Colorado, Idaho, Missouri, and West Virginia HEV fees only apply to PHEVs.
 ** Georgia PHEV vehicles are only assessed EV fees if the owners elect to purchase an alternative fuel license plate.

Additional EV registration fees range from \$50 to \$200. As of September 2017, the median fee is \$100.



Since 2013, Iowa EV registration fees are set based upon the same weight and value formula that is used for nonelectric vehicles.

For more information on how additional EV and HEV registration fees impact other states, and vehicle owners, and could potentially impact Iowa, see the [Issue Review, Electric Vehicle and Hybrid-Electric Vehicle Registration Fees](#).