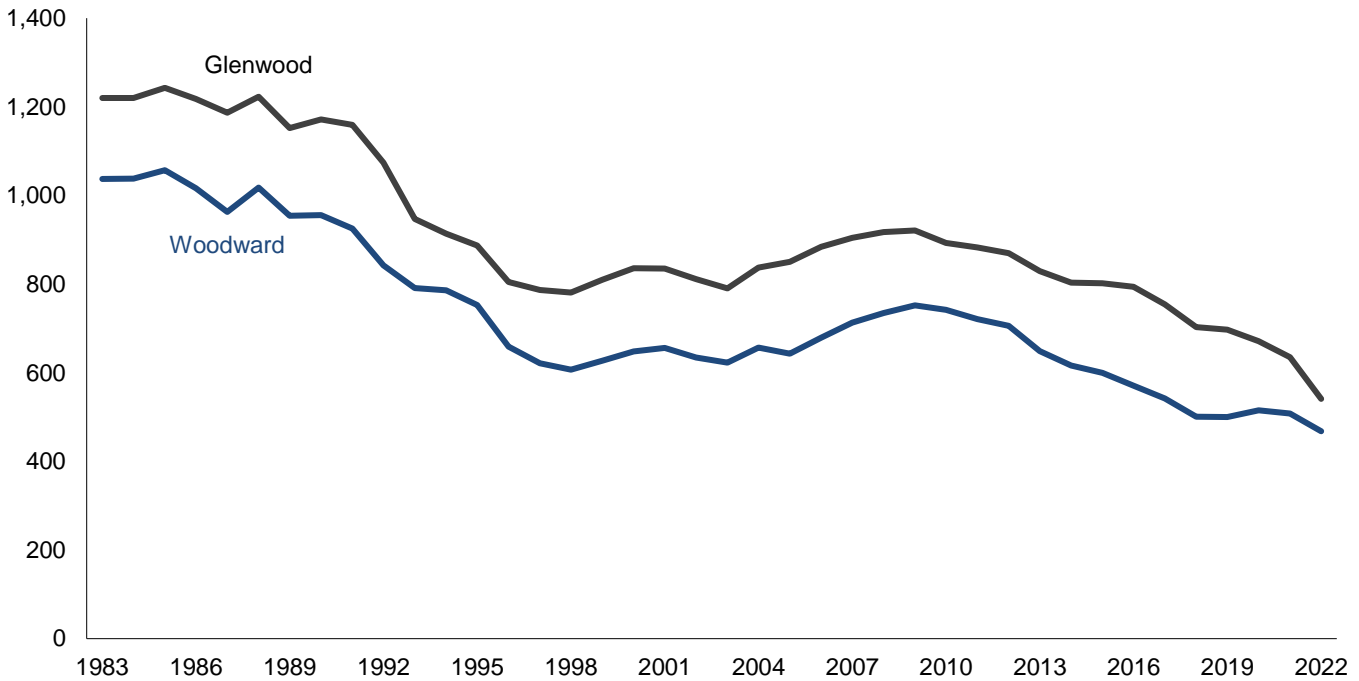


Staffing Levels at Human Services Institutions

(FTE Positions)



Average Annual Staffing Levels

(FTE Positions)

Fiscal Year	Juvenile Institutions		Resource Centers		Mental Health Institutions			
	Toledo	Eldora	Glenwood	Woodward	Cherokee	Clarinda	Independence	Mount Pleasant
2013	108	160	829	649	171	79	224	90
2014	55	159	803	616	168	78	223	90
2015	N/A	157	802	600	165	75	224	75
2016	N/A	159	794	571	162	N/A	209	N/A
2017	N/A	165	754	542	158	N/A	188	N/A
2018	N/A	166	703	501	147	N/A	180	N/A
2019	N/A	182	697	500	145	N/A	176	N/A
2020	N/A	185	671	515	150	N/A	180	N/A
2021	N/A	178	635	508	152	N/A	185	N/A
2022	N/A	175	541	468	150	N/A	176	N/A

Notes:

- 1) FTE: Full-time equivalent
- 2) The Toledo Juvenile Home was closed in FY 2014.
- 3) The Clarinda and Mount Pleasant Mental Health Institutes were closed in FY 2015.