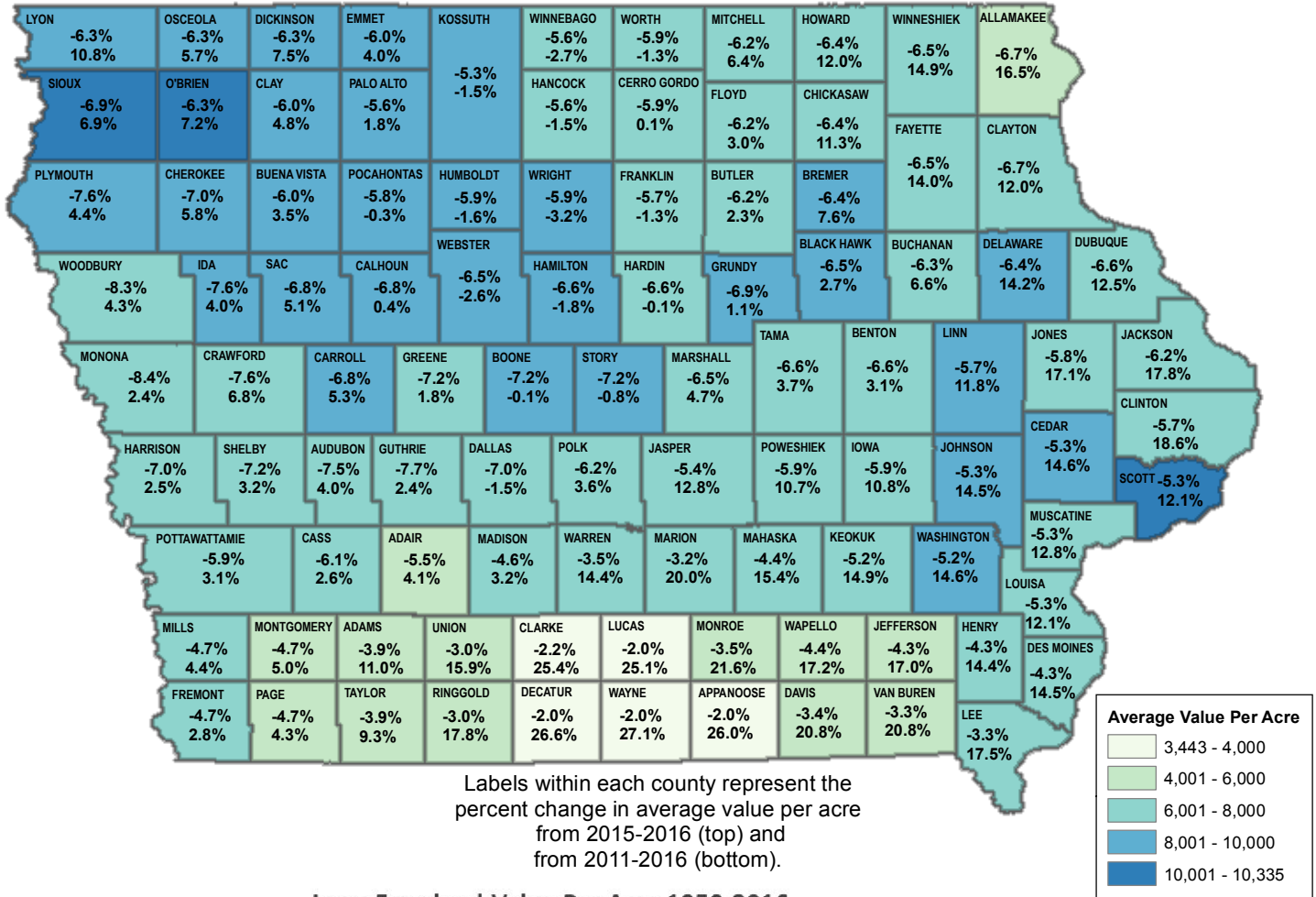
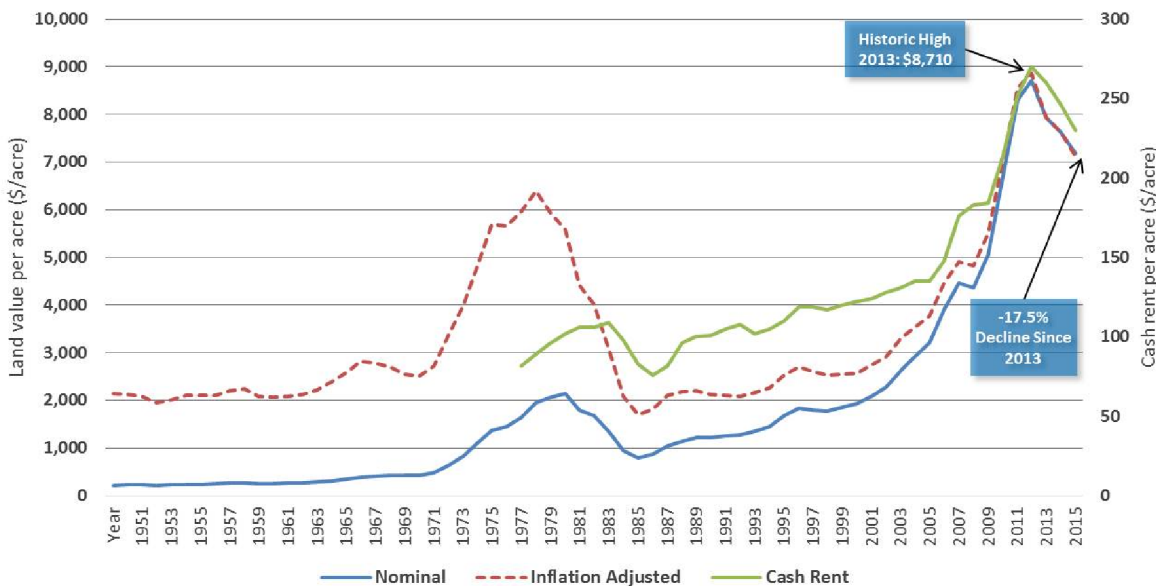


# AVERAGE FARMLAND VALUE PER ACRE BY COUNTY – 2016 WITH 1-YEAR AND 5-YEAR PERCENT CHANGE



## Iowa Farmland Value Per Acre 1950-2016 With Cash Rent Per Acre 1978-2016



Sources: Iowa State University Extension, LSA Calculations

Iowa LSA Staff Contact: Deb Kozel (515) 281-6767  
[deb.kozel@legis.iowa.gov](mailto:deb.kozel@legis.iowa.gov)