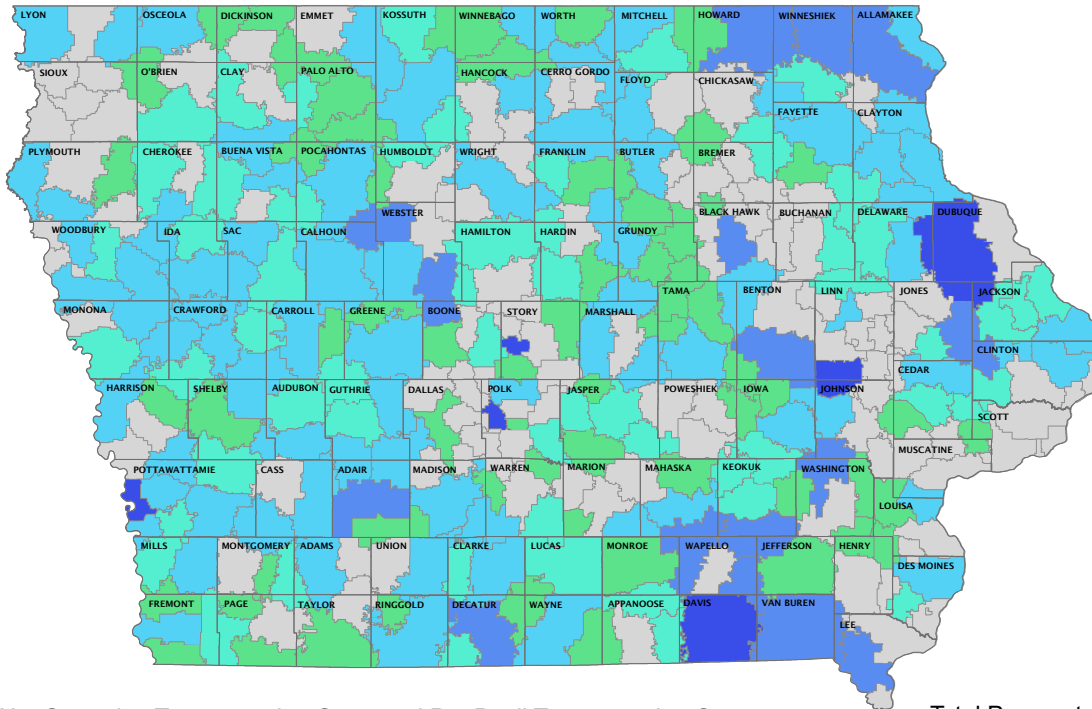


Transportation Equity Fund — FY 2022

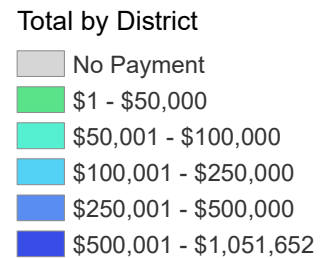
Iowa Code section [257.16C](#) establishes the Transportation Equity Program. The Program was created to provide additional funding to school districts for public school transportation costs that exceed a statewide average cost per pupil, which may be adjusted based upon funding.

For FY 2022, \$27.5 million has been appropriated from the General Fund to the Transportation Equity Fund, which buys down 218 school districts above the statewide average cost per pupil to the statewide average cost per pupil.

Transportation Equity Fund Aid Payments by District — FY 2022

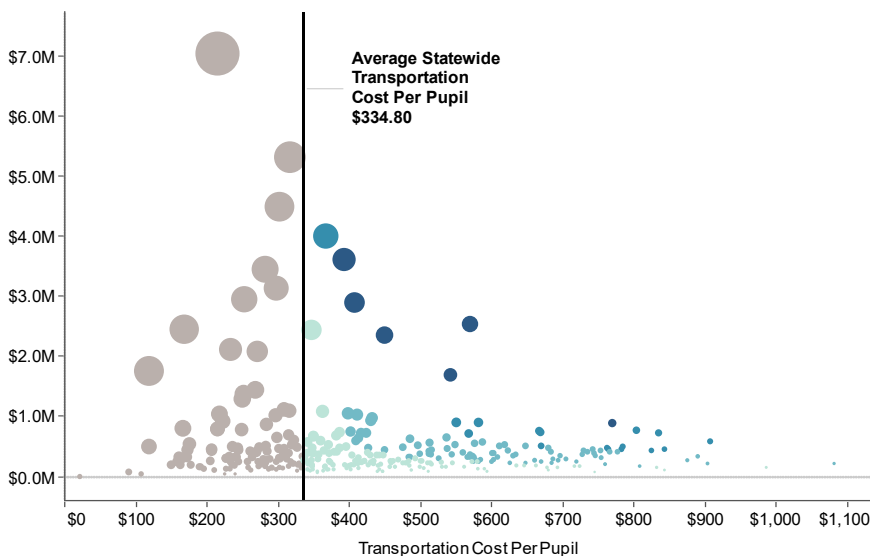


\$125,954
Average Aid Payment

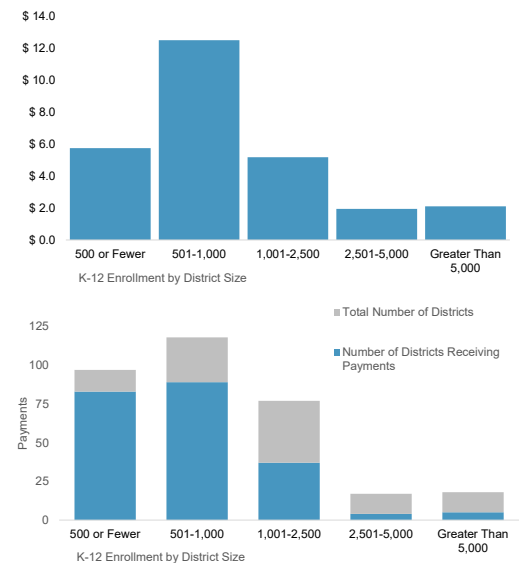


Net Operating Transportation Costs and Per Pupil Transportation Costs by School District — FY 2022

Enrollment for each district is represented by the size of the circle



Total Payment Amount by District Size and Number of Districts Receiving Payments (dollars in millions)



For more information on the Transportation Equity Fund, and how aid payments are calculated see the [Fiscal Topic Transportation Equity Program](#).